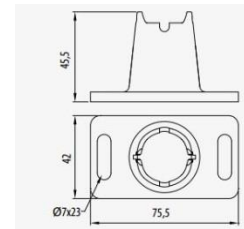


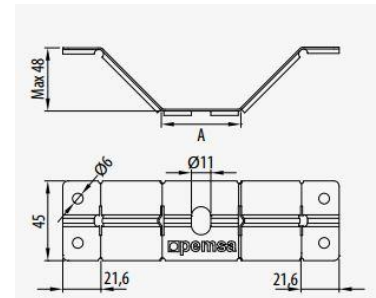
GOGATRAY Bodenbefestigung Kunststoff / floor fixing plastic

Material	Gewicht kg/Stk.	max.Traglast (SWL) kg	VPE Stk.	ArtNr	€/Stk.
material	weight	carrier load	PU		/pc.
Polyamid	0,021	40	100	06-68000060	2,59



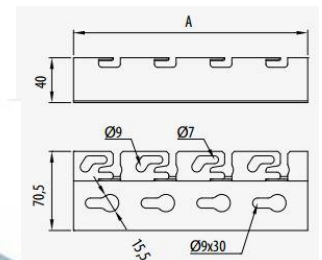
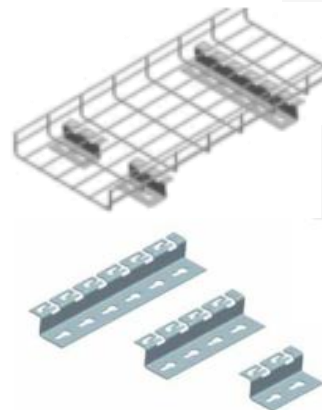
GOGATRAY Bodenbefestigung Metall / floor fixing metal

Material	Breite mm	Gewicht kg/Stk.	VPE Stk.	ArtNr	€/Stk.
material	width	weight	PU		/pc.
P.G.	45	0,04	10	06-67020020	3,31
P.G.	90	0,06	10	06-67020120	3,73
H.D.G.	45	0,04	10	06-67030020	5,30
H.D.G.	90	0,06	10	06-67030120	5,75



GOGATRAY Bodenkonsolen / floor consoles

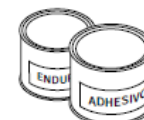
Material	Gewicht kg/Stk.	Breite mm	max.Traglast (SWL) kg	VPE Stk.	ArtNr	€/Stk.
material	weight	width	carrier load	PU		/pc.
P.G.	0,1	100	250	10	06-67020520	5,00
P.G.	0,2	200		10	06-67020522	5,96
P.G.	0,3	300		10	06-67020524	6,86
H.D.G.	0,1	100	250	10	06-67030520	6,17
H.D.G.	0,2	200		10	06-67030522	7,82
H.D.G.	0,4	300		10	06-67030524	9,47



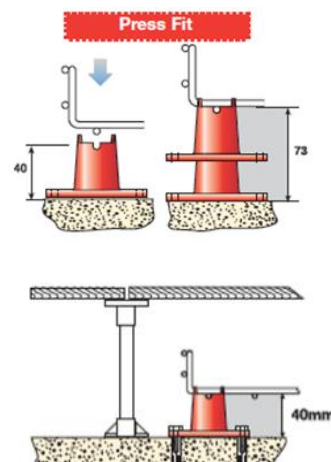
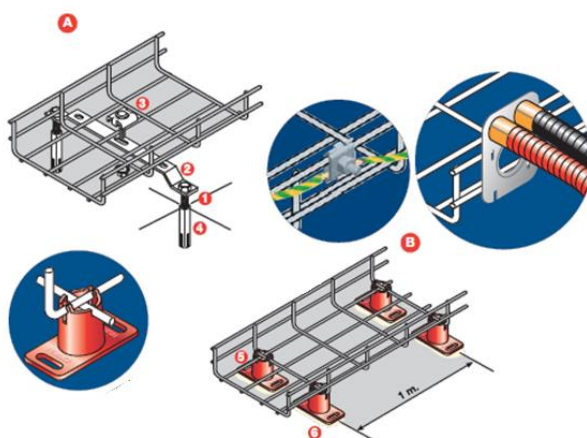
GOGATRAY Kleber für Bodenbefestigung / glue for floor mounting

Gewicht kg/Stk.	VPE Stk.	ArtNr	€/Stk.
weight	PU		/pc.
4	1	06-68000065	a.A.

a. A. = auf Anfrage / upon request



Besteht aus Kleber + Härter



Preise gültig ab 01.01.2024 exkl. MwSt., freibleibend, Auftragsrabatt auf Anfrage /
prices are valid from 01.01.2024 excl. VAT, subject to change, discounts upon request
sonst. Konditionen siehe www.gogatec.com/AGB.pdf, techn. Änderungen vorbehalten /
terms & conditions can be found on our website: www.gogatec.com/AGB.pdf; error, technical modifications and variations are reserved