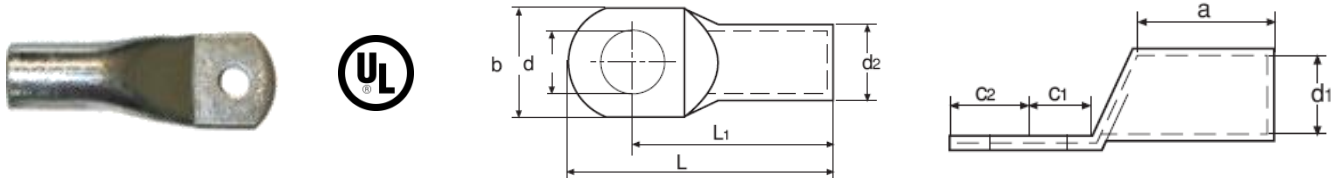


**GOGAPIN KSM-RK Rohrkabelschuh n. französischer Norm /
*uninsulated tubular cable lugs according to french norm***

Material / *material*: E-CU gal Sn. / *E-CU tube tin-plated*
Zulassung / *approval*: UL listed



Für mehrdrähtige Leiter / *for multi-stranded conductors*
Mit Sichtloch auf Anfrage / *inspection hole upon request*
Passende Werkzeuge siehe GOGATOOL Katalog / *for appropriate tools please see GOGATOOL catalog*

mm ² <i>range</i>	Loch für <i>hole size</i>	d	d1	d2	Abmessung mm <i>dimensions mm</i>						Gew./100Stk. <i>weight/100 pcs.</i>	VPE Stk. <i>PU</i>	Typ <i>type</i>	ArtNr	€/100 Stk. <i>/100 pcs.</i>
10	M5	5,5	4,7	6,6	27,5	22,0	10,0	10,3	5,5	7,0	0,350	800	KSM-RK-10-M5	124010010005	27,94
	M6	6,5	4,7	6,6	27,5	22,0	10,0	10,3	5,5	7,0	0,350	800	KSM-RK-10-M6	124010010006	29,68
	M8	8,5	4,7	6,6	30,5	23,7	10,0	13,5	6,8	8,7	0,350	800	KSM-RK-10-M8	124010010008	29,68
16	M5	5,5	5,6	7,8	29,5	24,0	12,0	11,2	5,5	6,5	0,520	500	KSM-RK-16-M5	124010016005	39,71
	M6	6,5	5,6	7,8	29,5	24,0	12,0	11,2	5,5	6,5	0,520	500	KSM-RK-16-M6	124010016006	39,71
	M8	8,5	5,6	7,8	33,0	26,2	12,0	13,5	6,8	8,7	0,580	500	KSM-RK-16-M8	124010016008	42,33
	M10	10,5	5,6	7,8	33,5	26,0	12,0	16,0	7,5	8,5	0,580	500	KSM-RK-16-M10	124010016010	49,73
25	M6	6,5	7,1	9,5	39,0	32,2	16,0	13,7	6,8	9,2	1,000	300	KSM-RK-25-M6	124010025006	67,20
	M8	8,5	7,1	9,5	39,0	32,2	16,0	13,7	6,8	9,2	0,910	300	KSM-RK-25-M8	124010025008	64,60
	M10	10,5	7,1	9,5	42,0	34,0	16,0	16,0	8,0	11,0	0,970	300	KSM-RK-25-M10	124010025010	72,40
	M12	13,0	7,1	9,5	45,0	35,0	16,0	18,0	10,0	12,0	0,970	300	KSM-RK-25-M12	124010025012	80,30
35	M6	6,5	8,2	10,8	44,0	35,7	19,0	15,3	8,3	9,7	1,400	200	KSM-RK-35-M6	124010035006	88,20
	M8	8,5	8,2	10,8	44,0	35,7	19,0	15,3	8,3	9,7	1,400	200	KSM-RK-35-M8	124010035008	88,20
	M10	10,5	8,2	10,8	48,0	38,0	19,0	15,7	10,0	12,0	1,400	200	KSM-RK-35-M10	124010035010	88,20
	M12	13,0	8,2	10,8	48,0	38,0	19,0	18,0	10,0	12,0	1,500	200	KSM-RK-35-M12	124010035012	101,20
50	M8	8,5	10,1	13,0	46,5	38,2	21,0	18,9	8,3	9,7	3,100	150	KSM-RK-50-M8	124010050008	136,60
	M10	10,5	10,1	13,0	50,5	40,5	21,0	18,9	10,0	12,0	2,100	150	KSM-RK-50-M10	124010050010	136,60
	M12	13,0	10,1	13,0	50,5	40,5	21,0	18,9	10,0	12,0	2,200	150	KSM-RK-50-M12	124010050012	144,80
	M16	17,0	10,0		45,0	21,0	26,0				2,200	150	KSM-RK-50-M16	124010050016	161,00
70	M8	8,5	11,5	14,7	50,6	42,3	23,0	21,1	8,3	9,7	2,800	100	KSM-RK-70-M8	124010070008	185,00
	M10	10,5	11,5	14,7	54,6	44,6	23,0	21,1	10,0	12,0	3,000	100	KSM-RK-70-M10	124010070010	185,00
	M12	13,0	11,5	14,7	54,6	44,6	23,0	21,1	10,0	12,0	3,000	100	KSM-RK-70-M12	124010070012	191,00
	M16	17,0	11,5	14,7	65,8	49,1	23,0	21,5	16,5	16,5	3,200	100	KSM-RK-70-M16	124010070016	209,00
95	M8	8,5	13,5	16,7	58,8	48,8	26,0	24,7	10,0	12,0	3,750	80	KSM-RK-95-M8	124010095008	234,00
	M10	10,5	13,5	16,7	58,8	48,8	26,0	24,7	10,0	12,0	3,750	80	KSM-RK-95-M10	124010095010	234,00
	M12	13,0	13,5	16,7	58,8	48,8	26,0	24,7	10,0	12,0	3,625	80	KSM-RK-95-M12	124010095012	234,00
	M16	17,0	13,5	16,7	66,8	51,8	26,0	24,7	15,0	15,0	3,875	80	KSM-RK-95-M16	124010095016	267,00
120	M8	8,5	15,0		54,0	26,0	29,0				8,500	50	KSM-RK-120-M8	124010120008	320,00
	M10	10,5	15,6	19,0	69,0	56,0	29,0	27,7	13,0	14,5	5,300	50	KSM-RK-120-M10	124010120010	294,00
	M12	13,0	15,6	19,0	69,0	56,0	29,0	27,7	13,0	14,5	5,200	50	KSM-RK-120-M12	124010120012	294,00
	M14	15,0	15,6	19,0	69,0	56,0	29,0	27,7	13,0	14,5	5,000	50	KSM-RK-120-M14	124010120014	a.A.
	M16	17,0	15,6	19,0	69,0	56,0	29,0	27,7	13,0	14,5	4,900	50	KSM-RK-120-M16	124010120016	a.A.
	M20	21,0	15,6	19,0	69,0	56,0	29,0	27,7	13,0	14,5	4,200	50	KSM-RK-120-M20	124010120020	a.A.

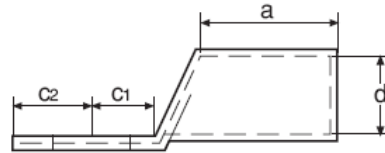
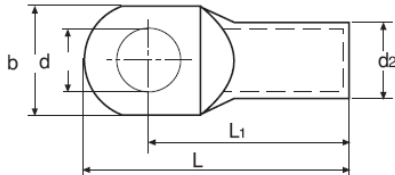
a. A. = auf Anfrage / upon request

Preise gültig ab 01.01.2024 exkl. MwSt., freibleibend, Auftragsrabatt auf Anfrage /
prices are valid from 01.01.2024 excl. VAT, subject to change, discounts upon request
sonst. Konditionen siehe www.gogatec.com/AGB.pdf, techn. Änderungen vorbehalten /
terms & conditions can be found on our website: www.gogatec.com/AGB.pdf; error, technical modifications and variations are reserved

Passende Werkzeuge siehe GOGATOOL Katalog / *for appropriate tools please see GOGATOOL catalog*

GOGAPIN KSM-RK Rohrkabelschuh n. französischer Norm / *uninsulated tubular cable lugs according to french norm*

Material / *material*: E-CU gal Sn. / *E-CU tube tin-plated*
Zulassung / *approval*: UL listed



Für mehrdrähtige Leiter / *for multi-stranded conductors*
Mit Sichtloch auf Anfrage / *inspection hole upon request*

mm ²	Loch für	d	d1	d2	Abmessung mm						Gew./100Stk.	VPE	Typ	ArtNr	€		
range	hole size	dimensions mm											kg	Stk.	type		/100 Stk.
					l	l1	a	b	c1	c2		PU					
150	M10	10,5	16,5	21,0	76,5	60,0	31,5	30,4	18,5	16,5	8,700	30	KSM-RK-150-M10	124010150010	471,00		
	M12	13,0	16,5	21,0	76,5	60,0	31,5	30,4	18,5	16,5	8,400	30	KSM-RK-150-M12	124010150012	456,00		
185	M10	10,5	18,4	23,0	82,5	65,5	34,4	34,2	17,0	18,0	10,000	30	KSM-RK-185-M10	124010185010	519,00		
	M12	13,0	18,4	23,0	82,5	65,5	34,4	34,2	17,0	18,0	10,000	30	KSM-RK-185-M12	124010185012	a.A.		
240	M12	13,0	21,2	26,4	89,0	72,0	39,1	38,7	17,0	18,0	14,800	25	KSM-RK-240-M12	124010240012	712,00		
300	M12	13,0	23,4	28,6	95,0	77,0	42,5	42,6	18,0	18,0	17,500	20	KSM-RK-300-M12	124010300012	906,00		
400	M16	17,0	26,8	32,8	104,7	79,9	39,0	48,3	24,8	22,2	26,000	12	KSM-RK-400-M16	124010400016	1 424,00		

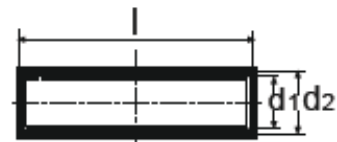
a. A. = auf Anfrage / *upon request*

GOGAPIN KSM-SV Stossverbinder unisoliert / *uninsulated butt connectors*

Material / *material*: E-CU gal Sn. / *E-CU tube tin-plated*
Normen / *standards*: DIN 40500

Für mehrdrähtige Leiter / *for multi-stranded conductors*

mm ²	Abmessung mm			Gewicht/100Stk.	VPE	Typ	ArtNr	€
range	d1	d2	l	kg	Stk.	type		/100 Stk.
	dimensions mm			weight/100 pcs.	PU			/100 pcs.
10	4,7	6,6	29,0	0,420	600	KSM-IILSV-10	1244800100	30,11
16	5,6	7,8	31,0	0,630	400	KSM-IILSV-16	1244800160	40,13
25	7,1	9,5	40,5	1,120	250	KSM-IILSV-25	1244800250	70,30
35	8,2	10,8	45,5	1,400	150	KSM-IILSV-35	1244800350	95,60
50	10,1	13,0	52,0	2,560	90	KSM-IILSV-50	1244800500	161,00
70	11,5	14,7	56,1	3,390	65	KSM-IILSV-70	1244800700	216,00
95	13,5	16,7	60,3	4,200	50	KSM-IILSV-95	1244800950	226,00
120	15,6	19,0	70,5	6,000	40	KSM-IILSV-120	1244801200	325,00
150	16,5	21,0	79,0	9,200	25	KSM-IILSV-150	1244801500	498,00
185	18,4	23,0	85,0	11,370	22	KSM-IILSV-185	1244801850	602,00
240	21,2	26,4	91,5	16,110	18	KSM-IILSV-240	1244802400	822,00
300	23,4	28,6	98,5	20,000	10	KSM-IILSV-300	1244803000	916,00



Preise gültig ab 01.01.2024 exkl. MwSt., freibleibend, Auftragsrabatt auf Anfrage /
prices are valid from 01.01.2024 excl. VAT, subject to change, discounts upon request
sonst. Konditionen siehe www.gogatec.com/AGB.pdf, techn. Änderungen vorbehalten /
terms & conditions can be found on our website: www.gogatec.com/AGB.pdf; error, technical modifications and variations are reserved