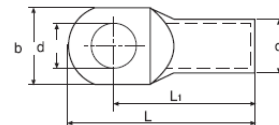
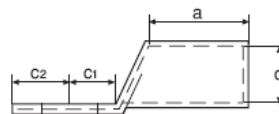




**GOGAPIN KSDIN-RK Presskabelschuh uniso. 6-185 mm<sup>2</sup> /**

**uninsulated compression cable lugs**

Material / material: E-CU gal Sn. Rohr nach DIN 40500 /  
E-CU tube tin-plated acc. DIN 40500



Zulassung / approval: UL listed  
Normen / standards: DIN 46235

Passende Werkzeuge siehe GOGATOOL Katalog / for appropriate tools please see GOGATOOL catalog

mm <sup>2</sup> range	Loch für hole size	Wk DIN	Abmessung mm dimensions mm								Gew./100Stk. kg weight/100 pcs.	VPE Stk. PU	Typ type	ArtNr	€/100 Stk. /100 pcs.
			d	d1	d2	l1	a	b	c1	c2					
6	M5	5	5,5	3,8	5,5	24,0	10,0	8,5	6,5	7,5	0,35	100	KSDIN-RK-6-M5	126010006005	61,30
	M6		5,5	3,8	5,5	24,0	10,0	8,5	7,5	8,0	0,35	100	KSDIN-RK-6-M6	126010006006	62,70
	M8		5,5	3,8	5,5	24,0	10,0	13,0	10,0	10,0	0,35	100	*KSDIN-RK-6-M8	126010006008	69,10
10	M5	6	5,3	4,5	6,0	27,0	10,0	9,0	7,0	8,5	0,35	500	KSDIN-RK-10-M5	126010010005	32,30
	M6		6,4	4,5	6,0	27,0	10,0	9,0	7,5	8,5	0,35	500	KSDIN-RK-10-M6	126010010006	32,30
	M8		8,4	4,5	6,0	27,0	10,0	13,0	10,0	10,0	0,39	100	*KSDIN-RK-10-M8	126010010008	34,47
	M10		10,3	4,5	6,0	27,0	10,0	15,5	12,0	12,0	0,39	100	*KSDIN-RK-10-M10	126010010010	95,10
	M6		8	6,4	5,5	8,5	36,0	20,0	13,0	7,5	8,0	1,16	250	KSDIN-RK-16-M6	126010016006
16	M8	8	8,4	5,5	8,5	36,0	20,0	13,0	10,0	10,0	1,24	250	KSDIN-RK-16-M8	126010016008	73,80
	M10		10,5	5,5	8,5	36,0	20,0	17,0	12,0	12,0	1,32	250	KSDIN-RK-16-M10	126010016010	73,80
	M12		13,0	5,5	8,5	36,0	20,0	18,0	13,0	13,0	1,18	100	*KSDIN-RK-16-M12	126010016012	73,80
	M6		10	6,4	7,0	10,0	38,0	20,0	14,0	7,5	8,0	1,45	200	KSDIN-RK-25-M6	126010025006
25	M8	10	8,4	7,0	10,0	38,0	20,0	16,0	10,0	10,0	1,55	200	KSDIN-RK-25-M8	126010025008	102,50
	M10		10,5	7,0	10,0	38,0	20,0	17,0	12,0	12,0	1,60	200	KSDIN-RK-25-M10	126010025010	103,80
	M12		13,0	7,0	10,0	38,0	20,0	19,0	13,0	13,0	1,55	100	KSDIN-RK-25-M12	126010025012	107,80
	M6		12	6,4	8,2	12,5	42,0	20,0	17,0	7,5	8,0	3,00	120	KSDIN-RK-35-M6	126010035006
35	M8	12	8,4	8,2	12,5	42,0	20,0	17,0	10,0	10,0	3,00	120	*KSDIN-RK-35-M8	126010035008	180,00
	M10		10,5	8,2	12,5	42,0	20,0	19,0	12,0	12,0	2,90	120	KSDIN-RK-35-M10	126010035010	180,00
	M12		13,0	8,2	12,5	42,0	20,0	21,0	13,0	13,0	2,90	100	KSDIN-RK-35-M12	126010035012	180,00
	M14		15,0	8,2	12,5	42,0	20,0	21,0	14,5	14,5	3,40	120	*KSDIN-RK-35-M14	126010035014	273,00
	M8		14	8,4	10,0	14,5	52,0	28,0	20,0	10,0	10,0	4,50	65	KSDIN-RK-50-M8	126010050008
50	M10	14	10,5	10,0	14,5	52,0	28,0	22,0	12,0	12,0	4,50	65	KSDIN-RK-50-M10	126010050010	277,00
	M12		13,0	10,0	14,5	52,0	28,0	24,0	13,0	13,0	4,50	65	KSDIN-RK-50-M12	126010050012	277,00
	M14		15,0	10,0	14,5	52,0	28,0	24,0	14,5	14,5	4,50	65	*KSDIN-RK-50-M14	126010050014	277,00
	M16		17,0	10,0	14,5	52,0	28,0	28,0	16,0	16,0	4,50	100	KSDIN-RK-50-M16	126010050016	314,00
	M8		16	8,4	11,5	16,5	55,0	28,0	24,0	10,0	10,0	5,80	50	KSDIN-RK-70-M8	126010070008
70	M10	16	10,5	11,5	16,5	55,0	28,0	24,0	12,0	12,0	6,00	50	KSDIN-RK-70-M10	126010070010	395,00
	M12		13,0	11,5	16,5	55,0	28,0	24,0	13,0	13,0	6,00	50	KSDIN-RK-70-M12	126010070012	395,00
	M14		15,0	11,5	16,5	55,0	28,0	24,0	14,5	14,5	6,20	50	*KSDIN-RK-70-M14	126010070014	395,00
	M16		17,0	11,5	16,5	55,0	28,0	30,0	16,0	16,0	5,90	50	KSDIN-RK-70-M16	126010070016	402,00
	M8		18	8,4	13,5	19,0	65,0	35,0	28,0	12,0	12,0	9,70	30	*KSDIN-RK-95-M8	126010095008
95	M10	18	10,5	13,5	19,0	65,0	35,0	28,0	12,0	12,0	10,00	30	KSDIN-RK-95-M10	126010095010	502,00
	M12		13,0	13,5	19,0	65,0	35,0	28,0	13,0	13,0	9,00	30	KSDIN-RK-95-M12	126010095012	502,00
	M14		15,0	13,5	19,0	65,0	35,0	28,0	14,5	14,5	9,50	30	*KSDIN-RK-95-M14	126010095014	502,00
	M16		17,0	13,5	19,0	65,0	35,0	32,0	16,0	16,0	9,70	30	KSDIN-RK-95-M16	126010095016	502,00
	M10		20	10,5	15,5	21,0	70,0	35,0	32,0	15,0	16,0	11,40	25	KSDIN-RK-120-M10	126010120010
120	M12	20	13,0	15,5	21,0	70,0	35,0	32,0	16,0	17,0	11,00	25	KSDIN-RK-120-M12	126010120012	659,00
	M14		15,0	15,5	21,0	70,0	35,0	32,0	18,0	19,0	11,40	25	*KSDIN-RK-120-M14	126010120014	659,00
	M16		17,0	15,5	21,0	70,0	35,0	32,0	19,0	20,0	11,30	25	KSDIN-RK-120-M16	126010120016	659,00
	M20		21,0	15,5	21,0	70,0	35,0	38,0	21,0	22,0	11,20	25	KSDIN-RK-120-M20	126010120020	659,00
	M10		22	10,5	17,0	23,5	78,0	35,0	34,0	15,0	16,0	16,00	20	KSDIN-RK-150-M10	126010150010
150	M12	22	13,0	17,0	23,5	78,0	35,0	34,0	16,0	17,0	16,00	20	KSDIN-RK-150-M12	126010150012	936,00
	M14		15,0	17,0	23,5	78,0	35,0	34,0	19,0	20,0	16,80	20	*KSDIN-RK-150-M14	126010150014	936,00
	M16		17,0	17,0	23,5	78,0	35,0	34,0	19,0	20,0	16,20	20	KSDIN-RK-150-M16	126010150016	936,00
	M20		21,0	17,0	23,5	78,0	35,0	40,0	21,0	22,0	16,00	20	KSDIN-RK-150-M20	126010150020	936,00
	M10		25	10,5	19,0	25,5	82,0	40,0	37,0	15,0	16,0	18,90	15	KSDIN-RK-185-M10	126010185010
185	M12	25	13,0	19,0	25,5	82,0	40,0	37,0	16,0	17,0	18,40	15	KSDIN-RK-185-M12	126010185012	1123,00
	M14		15,0	19,0	25,5	82,0	40,0	37,0	19,0	20,0	19,40	15	*KSDIN-RK-185-M14	126010185014	1123,00
	M16		17,0	19,0	25,5	82,0	40,0	37,0	19,0	20,0	19,30	15	KSDIN-RK-185-M16	126010185016	1123,00
	M20		21,0	19,0	25,5	82,0	40,0	40,0	21,0	22,0	19,30	15	KSDIN-RK-185-M20	126010185020	1123,00

\* nicht genormt / \* not normed

Preise gültig ab 01.01.2024 exkl. MwSt., freibleibend, Auftragsrabatt auf Anfrage /

prices are valid from 01.01.2024 excl. VAT, subject to change, discounts upon request

sonst. Konditionen siehe [www.gogatec.com/AGB.pdf](http://www.gogatec.com/AGB.pdf), techn. Änderungen vorbehalten /

terms & conditions can be found on our website: [www.gogatec.com/AGB.pdf](http://www.gogatec.com/AGB.pdf); error, technical modifications and variations are reserved

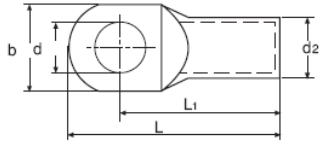
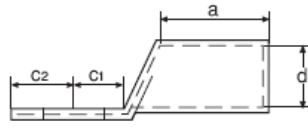


**GOGAPIN KSDIN-RK Presskabelschuh uniso. 240-1000 mm² /  
uninsulated compression cable lugs**

**Material / material:** E-CU gal Sn. Rohr nach DIN 40500 /  
E-CU tube tin-plated acc. DIN 40500

**Zulassung / approval:** UL listed

**Normen / standards:** DIN 46235



**Passende Werkzeuge siehe GOGATOOL Katalog / for appropriate tools please see GOGATOOL catalog**

mm <sup>2</sup> range	Loch für hole	Wk DIN	d	d1	Abmessung mm dimensions mm						Gew./100Stk. kg weight/100pcs.	VPE Stk. PU	Typ type	ArtNr	€/100 Stk. /100 pcs.
240	M10	28	11,0	21,5	29,0	92,0	40,0	42,0	16,0	16,0	26,48	10	KSDIN-RK-240-M10	126010240010	1 497,00
	M12		13,0	21,5	29,0	92,0	40,0	42,0	16,0	17,0	27,50	10	KSDIN-RK-240-M12	126010240012	1 497,00
	M14		15,0	21,5	29,0	92,0	40,0	42,0	19,0	20,0	28,30	10	KSDIN-RK-240-M14	126010240014	1 497,00
	M16		17,0	21,5	29,0	92,0	40,0	42,0	16,0	20,0	27,50	10	KSDIN-RK-240-M16	126010240016	1 497,00
	M20		21,0	21,5	29,0	92,0	40,0	42,0	16,0	22,0	27,60	10	KSDIN-RK-240-M20	126010240020	1 497,00
300	M16	32	17,0	24,5	32,0	100,0	50,0	48,0	19,0	22,0	34,00	10	KSDIN-RK-300-M16	126010300016	1 946,00
	M20		21,0	24,5	32,0	100,0	50,0	48,0	22,0	22,0	33,80	10	KSDIN-RK-300-M20	126010300020	1 946,00
400	M12	38	13,0	27,5	8,5	115,0	70,0	55,0	25,0	25,0	69,50	8	KSDIN-RK-400-M12	126010400012	3 460,00
	M14		15,0	27,5	38,5	115,0	70,0	55,0	25,0	25,0	69,40	8	KSDIN-RK-400-M14	126010400014	a.A.
	M16		17,0	27,5	38,5	115,0	70,0	55,0	25,0	25,0	67,50	8	KSDIN-RK-400-M16	126010400016	3 742,00
	M20		21,0	27,5	38,5	115,0	70,0	55,0	25,0	25,0	69,40	8	KSDIN-RK-400-M20	126010400020	4 870,00
500	M16	42	17,0	31,0	42,0	125,0	70,0	60,0	25,0	25,0	83,00	4	KSDIN-RK-500-M16	126010500016	4 640,00
	M20		21,0	31,0	42,0	125,0	70,0	60,0	25,0	25,0	83,00	4	KSDIN-RK-500-M20	126010500020	4 640,00
625	M16	44	17,0	34,5	44,0	135,0	80,0	64,0	25,0	25,0	79,60	4	KSDIN-RK-625-M16	126010625016	4 789,00
	M20		21,0	34,5	44,0	135,0	80,0	64,0	25,0	25,0	79,00	4	KSDIN-RK-625-M20	126010625020	4 789,00
800	M16	52	17,0	40,0	52,0	165,0	100,0	75,0	30,0	30,0	150,00	1	KSDIN-RK-800-M16	126010800016	a.A.
	M20		21,0	40,0	52,0	165,0	100,0	75,0	30,0	30,0	150,00	1	KSDIN-RK-800-M20	126010800020	a.A.
1000	M20	58	21,0	44,0	58,0	165,0	100,0	85,0	30,0	30,0	199,00	1	KSDIN-RK-1000-M20	126010999020	a.A.

a. A. = auf Anfrage / upon request

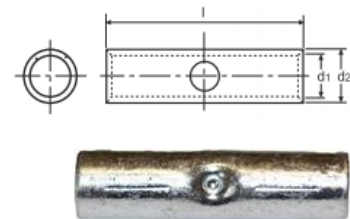
**GOGAPIN KSE-SVDIN Pressverbinder unisoliert / uninsulated compression joints**

**Material / material:** E-CU gal Sn. Rohr nach DIN 40500 / E-CU tube tin-plated acc. DIN 40500

**Normen / standards:** teilweise / partly DIN 46267

**Passende Werkzeuge siehe GOGATOOL Katalog / for appropriate tools please see GOGATOOL catalog**

mm <sup>2</sup> range	Abmessung mm dimensions mm			Gewicht/100Stk. kg weight/100 pcs.	VPE Stk. PU	Typ type	ArtNr	€/100 Stk. /100 pcs.
6	3,8	5,5	28,5	0,310	100	KSDIN-SV-6	1260800060	72,70
10	4,5	6,0	30,0	0,350	100	KSDIN-SV-10	1260800100	28,81
16	5,5	8,5	50,0	1,450	100	KSDIN-SV-16	1260800160	82,00
25	7,0	10,0	50,0	1,770	100	KSDIN-SV-25	1260800250	101,70
35	8,2	12,5	50,0	2,900	100	KSDIN-SV-35	1260800350	182,00
50	10,0	14,5	56,0	4,260	50	KSDIN-SV-50	1260800500	266,00
70	11,5	16,5	56,0	5,410	50	KSDIN-SV-70	1260800700	305,00
95	13,5	19,0	70,0	8,700	50	KSDIN-SV-95	1260800950	468,00
120	15,5	21,0	70,0	9,700	50	KSDIN-SV-120	1260801200	515,00
150	17,0	23,5	80,0	14,500	50	KSDIN-SV-150	1260801500	764,00
185	19,0	25,5	85,0	17,000	25	KSDIN-SV-185	1260801850	858,00
240	21,5	29,0	90,0	23,500	25	KSDIN-SV-240	1260802400	1 248,00
300	24,5	32,0	100,0	29,230	25	KSDIN-SV-300	1260803000	2 275,00
400	27,5	38,5	150,0	75,320	10	KSDIN-SV-400	1260804000	3 046,00
500	31,0	42,0	160,0	79,100	5	KSDIN-SV-500	1260805000	6 780,00
625	34,5	44,0	160,0	89,400	5	KSDIN-SV-625	1260806250	7 030,00
800	40,0	52,0	200,0	151,200	3	KSDIN-SV-800	1260808000	10 537,00
1000	44,0	58,0	200,0	198,500	3	KSDIN-SV-1000	1260809990	a.A.



a. A. = auf Anfrage / upon request

Preise gültig ab 01.01.2024 exkl. MwSt., freibleibend, Auftragsrabatt auf Anfrage /

prices are valid from 01.01.2024 excl. VAT, subject to change, discounts upon request

sonst. Konditionen siehe [www.gogatec.com/AGB.pdf](http://www.gogatec.com/AGB.pdf), techn. Änderungen vorbehalten /

terms & conditions can be found on our website: [www.gogatec.com/AGB.pdf](http://www.gogatec.com/AGB.pdf); error, technical modifications and variations are reserved