

GOGALIGHT BSZ Betriebsstundenzähler / hour meters

Anzeige / display: 99999.99 Stunden / hours

Montageart / mounting type: Frontplatte o. DIN-Schiene (mit optionalem Adapter) / panel or DIN-rail (with opt. adapter)

Spannungsversorgung / power supply: 230 VAC, 24 VDC andere Spannungen auf Anfrage erhältlich / other voltages available on request

Zifferngröße / digit size: 4 mm

Frontmaß / front dimension: 48 x 48mm

Gewicht / weight: 50g

Schutzart / protection class: IP65 Front / front, IP20 Klemmen / terminals

Anschlußart / connecting type: Schraubklemmen / screw terminals

Zulassungen / approvals: CE, UL E171200, RoHS

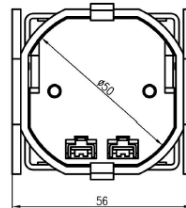
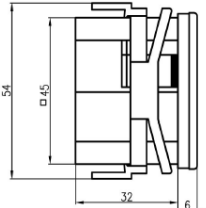


Typ <i>type</i>	Abmessungen mm HxBxT / HxWxD <i>dimensions mm</i>	Temperaturbereich °C <i>temperature range</i>	Spannung <i>voltage</i>	Art.Nr. <i>part no.</i>	€ /Stk. <i>/pc.</i>
BSZ-1-230 *	48 x 48 x 32	-25 - +80	230 V AC	458220	24,43
BSZ-1-24 *	48 x 48 x 32	-20 - +70	24 V DC	458221	53,70
Montagezubehör / mounting accessories					
Rahmen 55 x 55mm / frame 55 x 55mm **				458228	0,87
DIN-Adapter / DIN - adapter				458229	3,23

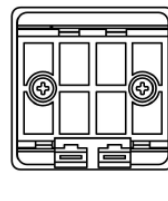
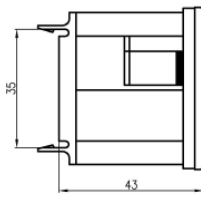


* Befestigung im Lieferumfang enthalten / mounting included in scope of delivery

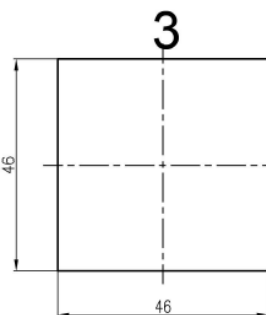
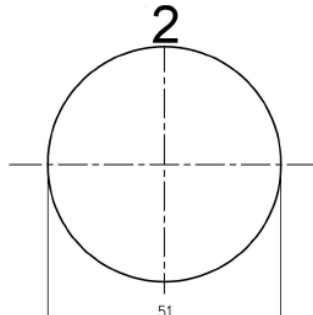
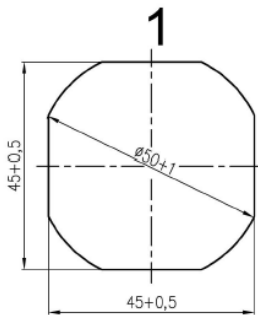
** Rahmen nicht notwendig bei Einbauausschnitt Nr. 1 / frame not necessary at panel cutout no. 1



DIN-Adapter / DIN-adapter



Einbauausschnitte / panel cutouts



Rahmen / frame

Preise gültig ab 01.01.2024 exkl. MwSt., freibleibend, Auftragsrabatt auf Anfrage /

prices are valid from 01.01.2024 excl. VAT, subject to change, discounts upon request

sonst. Konditionen siehe www.gogatec.com/AGB.pdf, techn. Änderungen vorbehalten /

terms & conditions can be found on our website: www.gogatec.com/AGB.pdf; error, technical modifications and variations are reserved