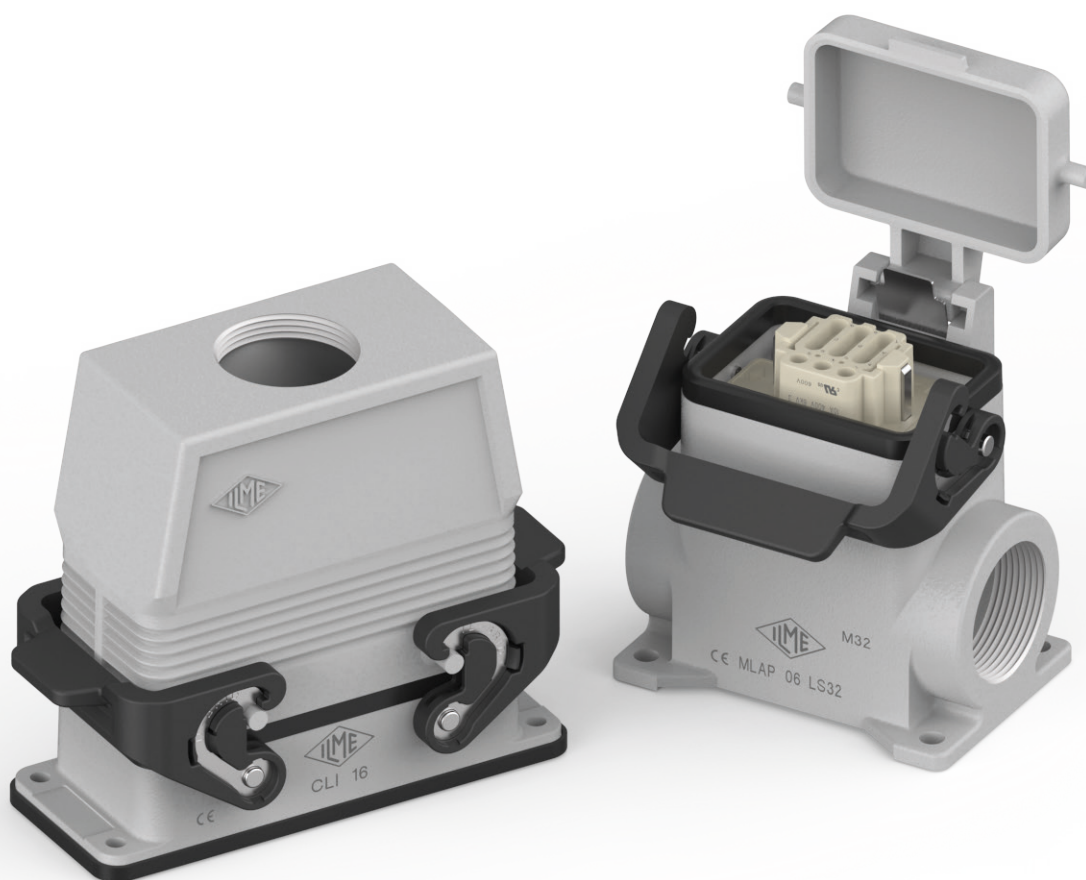


## IL-BRID LOCKING LEVERS For standard size enclosures

CL – ML



**Proprietary design  
with embedded stainless steel core  
to protect industrial multipole  
connections**



Find out more  
[www.ilme.com](http://www.ilme.com)

## TECHNICAL FEATURES



Watch our  
technical clip

Specific industrial applications demand the design of equally customized connection solutions capable of covering each distinct installation requirement.

Among the enclosures' locking systems introduced by ILME in its product offer, the IL-BRID mechanism, a lever in thermoplastic material with a stainless-steel core, combines the technical characteristics of both these materials for durable but significantly low-wear design.

The **IL-BRID locking lever**, already introduced in the compact "CZ" and "MZ" size "49.16" and "66.16" enclosures series, is **now extended** to the whole ILME enclosures range for standard industrial applications, with the designation "**CL**" and "**ML**" in the bulkhead/surface mount housing or hood with lever versions, sizes "44.27", "57.27", "77.27" and "104.27".

The IL-BRID locking lever is **compatible** with the entire range of ILME enclosures with pegs (in single or double-lever configuration), offering an IP65 or IP66/IP69 degree of protection according to model.

The series, with standard metric M cable entries where foreseen, is also available, upon request, **with Pg or NPT cable entries** (surface housing or hood with levers).

Main technical and functional characteristics:

- Q **locking lever** made of self-extinguishing thermoplastic material (UL approved) and stainless-steel core;
- Q **improved closing mechanism** with reduced wear on the pegs of the enclosure's counterpart;
- Q **proprietary, ergonomic handles design** for an easy opening and closing operation;
- Q **IP65 or IP66/IP69** degree of protection according to EN 60529 (depending on model);
- Q **reduced occupation** of space on the outer edges thanks to a curved design;
- Q **reversibility of the lever** in the bulkhead housing versions (the locking levers can be mounted on the counterpart hood).

