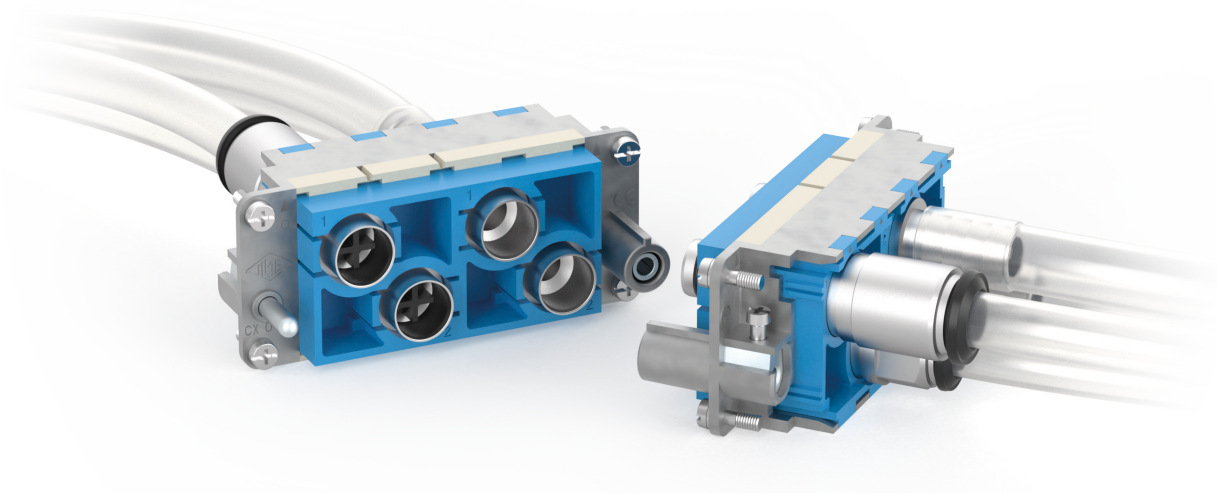


## MIXO PNEUMATIC METAL CX 02 MPB



### **New double-sized connector modules and relevant metal removable pneumatic contacts:**

- for transmission of clean and compressed air
- female contacts with or without shut-off valve
- straight version with:
  - hose barbs push-over tube attachment (ID: 8 and 10 mm)
  - quick-fitting push-in tube attachment (OD: 8 and 10 mm)



Find out more  
[www.ilme.com](http://www.ilme.com)

## TECHNICAL FEATURES

- Q Connector modules (male and female, due to asymmetric design) **for up to 2 metal removable pneumatic contacts** of any of the two **8.0** and **10** sizes available.
- Q Metal pneumatic contacts with hose barbs, push-over tube attachment, straight version (work on ID – inner diameter) for use with hoods with vertical cable outlet, or bulkhead mounting housings.
- Q Metal pneumatic contacts with quick-fitting, push-in tube attachment, straight version (work on OD – outer diameter) for use with hoods with vertical cable outlet, or bulkhead mounting housings.
- Q All **contacts are removable**, without damaging the module or the contact, by means of the **CMPEB B** dedicated removal tool.

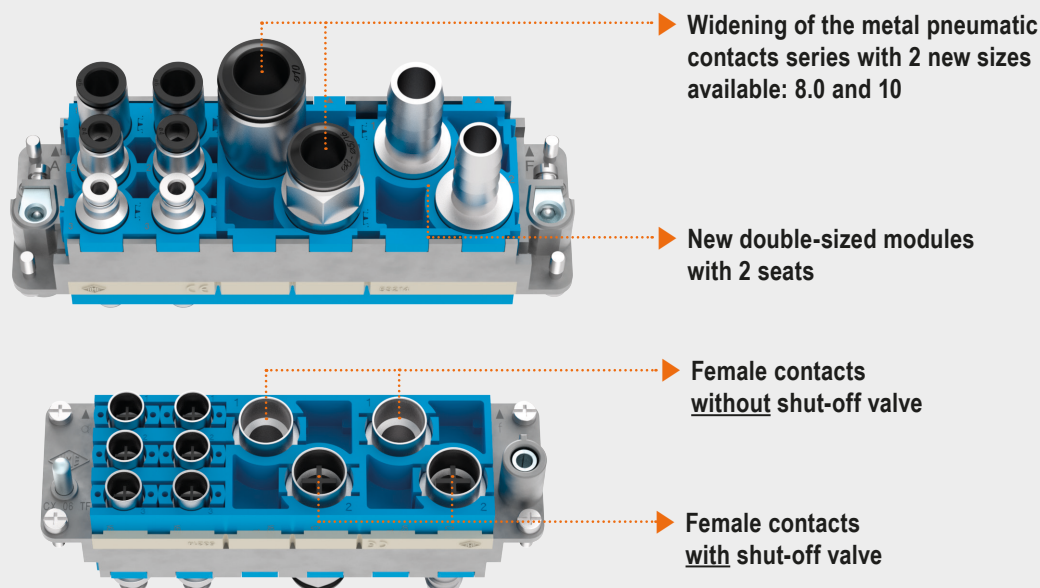
- Q For tubes Ø 8 mm and Ø 10 mm (see Table 1. below): outer diameter OD (push-in attachment of tubes to the quick-fitting contacts), or inner diameter ID (push-over attachment of tubes over barbed straight contacts).

### ✓ CERTIFICATIONS

- cURus, CQC, DNV, BV, pending.
- **CE** and **UKCA** markings and EAC mark not applicable.
- **RoHS:**
  - pneumatic metal module: compliant without exemptions;
  - metal pneumatic contacts: compliant with exemption **6(c)**.

	Tube Ø 8 mm				Tube Ø 10 mm			
	hose barbs (ID - inner Ø)		quick-fitting (OD - outer Ø)		hose barbs (ID - inner Ø)		quick-fitting (OD - outer Ø)	
	Male	Female	Male	Female	Male	Female	Male	Female
Straight <u>without</u> shut-off valve	CX 8.0 MPM	CX 8.0 MPF	CX 8.0 MPQM	CX 8.0 MPQF	CX 10 MPM	CX 10 MPF	CX 10 MPQM	CX 10 MPQF
Straight <u>with</u> shut-off valve		CX 8.0 MPV		CX 8.0 MPQV		CX 10 MPV		CX 10 MPQV

Table 1. Pneumatic contacts



# CX 02 MPB metal removable pneumatic contacts

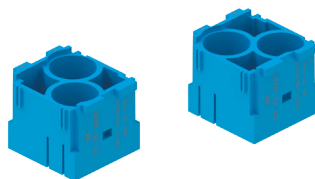
The modular inserts must be installed in suitable frames, which are then mounted in traditional enclosures\* or in COB panel supports

page:

frames for modular units\*

317

modular units with 2 seats



Q 10 000 MATINGS WITH HNM FRAMES AND HNM ENCLOSURES

FROM JUNE 2023

removal tool



FROM JUNE 2023

refer to CN.19 pages

description

part No.

part No.

without contacts (to be ordered separately)  
 female insert with 2 housings, for tube  $\varnothing$  8 - 10 mm  
 male insert with 2 housings, for tube  $\varnothing$  8 - 10 mm

[CX 02 MPBF](#)  
[CX 02 MPBM](#)

removal tool  
 for metal pneumatic contacts  $\varnothing$  8 - 10 mm

[CMPES B](#)

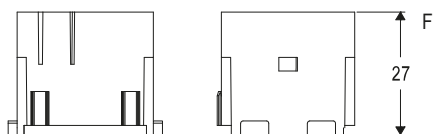
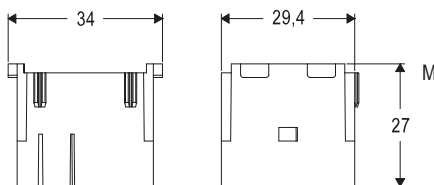
- UL, (ECBT2/8), DNV, BV pending
- insulation resistance:  $\geq 10 \text{ G}\Omega$
- working temperature range:  $-40 \text{ }^\circ\text{C} + 80 \text{ }^\circ\text{C}$
- made of self-extinguishing thermoplastic resin UL 94V-0
- mechanical life:  
 $\geq 500$  cycles with MIXO frames and enclosures  
 $\geq 10.000$  cycles with HNM MIXO frames and enclosures

**Use of units for metal pneumatic contacts**

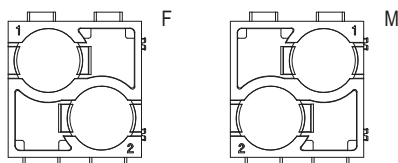
- pneumatic contacts for pressure values up to 10 bar, for use with clean and dry compressed air
- use of tubes with  $\varnothing$  8 - 10 mm (ID inner  $\varnothing$  for hose barbs contacts, OD outer  $\varnothing$  for quick-fitting contacts), and possible replacement of tubes with assembled units
- possibility of using tubes with different diameters in the same modular unit
- female contacts with or without closing valve

**Warnings:**

- CRM/F CX coding and guiding pins must be used for pneumatic contacts modules.
- These pins also provide coding if pneumatic contacts modules are used exclusively.
- The use of pneumatic contacts requires an appropriate filtering and dehydration system to prevent dangerous condensation.



contacts side (front view)  
 side with reference arrow ▲



# CX 02 MPB metal removable pneumatic contacts

metal pneumatic contacts, straight hose barbs, tube ID inner  $\varnothing$  8 - 10 mm



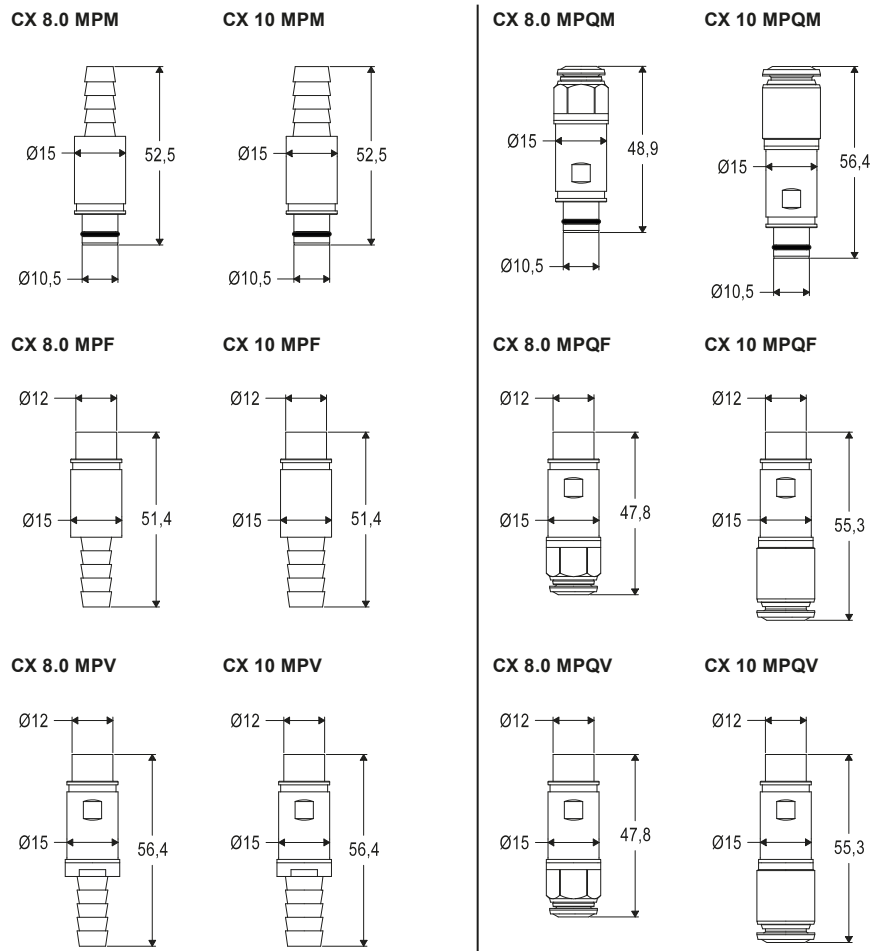
FROM JUNE 2023

metal pneumatic contacts, straight quick-fitting, tube OD outer  $\varnothing$  8 - 10 mm



FROM JUNE 2023

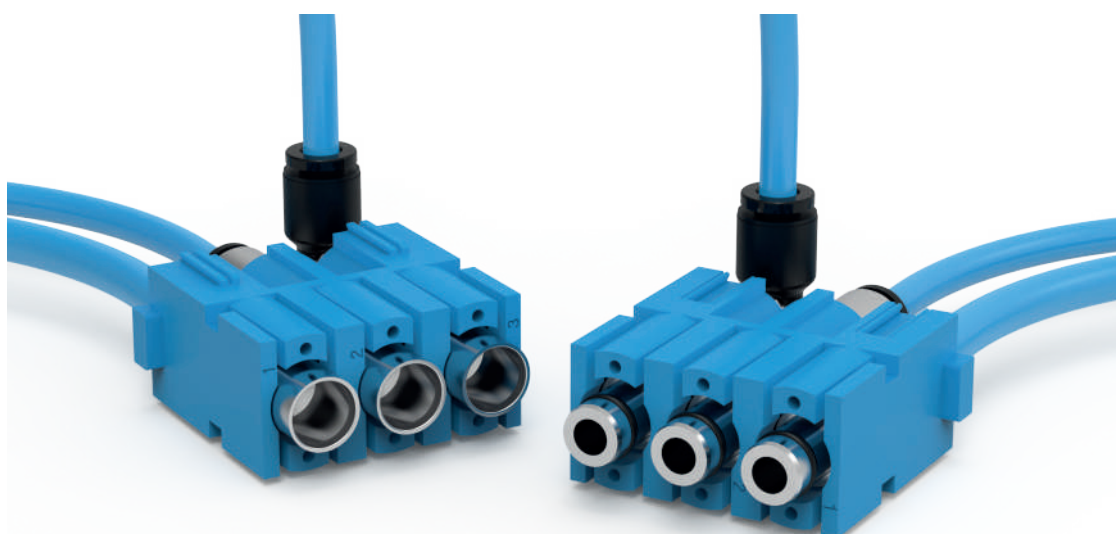
description	part No.	part No.
<b>hose barbs (ID outer <math>\varnothing</math>) male contacts</b> without shut-off valve without shut-off valve	<a href="#">CX 8.0 MPM</a> <a href="#">CX 10 MPM</a>	
<b>hose barbs (ID outer <math>\varnothing</math>) female contacts</b> without shut-off valve without shut-off valve	<a href="#">CX 8.0 MPF</a> <a href="#">CX 10 MPF</a>	
<b>hose barbs (ID outer <math>\varnothing</math>) female contacts</b> with shut-off valve with shut-off valve	<a href="#">CX 8.0 MPV</a> <a href="#">CX 10 MPV</a>	
<b>quick-fitting (OD outer <math>\varnothing</math>) male contacts</b> without shut-off valve without shut-off valve		<a href="#">CX 8.0 MPQM</a> <a href="#">CX 10 MPQM</a>
<b>quick-fitting (OD outer <math>\varnothing</math>) female contacts</b> without shut-off valve without shut-off valve		<a href="#">CX 8.0 MPQF</a> <a href="#">CX 10 MPQF</a>
<b>quick-fitting (OD outer <math>\varnothing</math>) female contacts</b> with shut-off valve with shut-off valve		<a href="#">CX 8.0 MPQV</a> <a href="#">CX 10 MPQV</a>



---

## MIXO PNEUMATIC METAL CX 03 MP

---



Connector module and metal removable  
pneumatic contacts

- for transmission of clean and compressed air
- straight and angled versions
- with hose barbs push-over tube attachment  
or with quick-fitting push-in tube attachment
- female contacts with/without shut-off valve
- CMPES removal tool



Find more  
information on  
our products at  
[www.ilme.com](http://www.ilme.com)

# TECHNICAL FEATURES

## CX 03 MP



Watch  
our technical  
clip

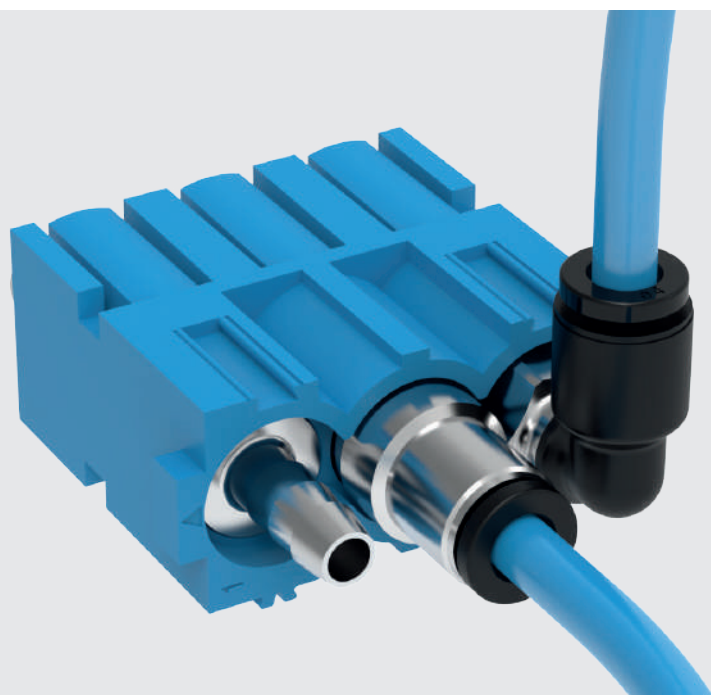
- Connector module **for up to 3 metal removable pneumatic contacts** of any of the three sizes available: 3.0, 4.0, 6.0.
- Contacts with hose barbs, push-over tube attachment, straight version only.
- Contacts with quick-fitting, push-in tube attachment, both straight and angled versions.
- All **contacts removable** without damaging the module or the contact, with **CMPEs** dedicated removal tool.
- Straight version for use with hoods with vertical cable outlet.
- Angled version for use with hoods with horizontal cable outlet.
- For tubes Ø 3 mm, Ø 4 mm and Ø 6 mm (see Table 1. below):
  - outer diameter OD (push-in attachment of tubes to the quick-fitting contacts), or
  - inner diameter ID (push-over attachment of tubes over barbed straight contacts).
- **RoHS**  
pneumatic metal module: compliant without exemptions  
metal pneumatic contacts: compliant with exemption **6(c)**.

**Table 1. Pneumatic contacts**

	Tube Ø 3 mm				Tube Ø 4 mm				Tube Ø 6 mm			
	hose barbs (ID - inner Ø)		quick-fitting (OD - outer Ø)		hose barbs (ID - inner Ø)		quick-fitting (OD - outer Ø)		hose barbs (ID - inner Ø)		quick-fitting (OD - outer Ø)	
	Male	Female	Male	Female	Male	Female	Male	Female	Male	Female	Male	Female
Straight <u>without</u> shut-off valve	CX 3.0 MPM	CX 3.0 MPF	CX 3.0 MPQM	CX 3.0 MPQF	CX 4.0 MPM	CX 4.0 MPF	CX 4.0 MPQM	CX 4.0 MPQF	CX 6.0 MPM	CX 6.0 MPF	CX 6.0 MPQM	CX 6.0 MPQF
Straight <u>with</u> shut-off valve		CX 3.0 MPV		CX 3.0 MPQV		CX 4.0 MPV		CX 4.0 MPQV		CX 6.0 MPV		CX 6.0 MPQV
Angled <u>without</u> shut-off valve			CX 3.0 MPAM	CX 3.0 MPAF			CX 4.0 MPAM	CX 4.0 MPAF			CX 6.0 MPAM	CX 6.0 MPAF
Angled <u>with</u> shut-off valve				CX 3.0 MPAV				CX 4.0 MPAV				CX 6.0 MPAV

straight version and angled version available for use with different cable outlets

with hose barbs push-over tube attachment or with quick-fitting push-in tube attachment



# CX 03 MP metal removable pneumatic contacts

The modular inserts must be installed in suitable frames which are then mounted in traditional housings or in COB panel support. Single-sized modular units may be directly mounted inside MIXO ONE enclosures.

modular units with 3 seats



**Q 10 000 MATINGS WITH HNM FRAMES AND HNM ENCLOSURES**

**FROM OCTOBER 2021**

metal pneumatic contacts, straight hose barbs  
tube ID inner Ø 3 - 4 - 6 mm



**FROM OCTOBER 2021**

	page:
frames for modular units	76
MIXO ONE enclosures	369

refer to CN.19 pages

description	part No.	part No.
without contacts (to be ordered separately) <b>inserts with 3 housings</b> for tube Ø 3 - 4 - 6 mm	<b>CX 03 MP</b>	
<b>hose barbs (ID inner Ø) male contacts,</b> without shut-off valve without shut-off valve without shut-off valve		<b>CX 3.0 MPM</b> <b>CX 4.0 MPM</b> <b>CX 6.0 MPM</b>
<b>hose barbs (ID inner Ø) female contacts,</b> without shut-off valve without shut-off valve without shut-off valve		<b>CX 3.0 MPF</b> <b>CX 4.0 MPF</b> <b>CX 6.0 MPF</b>
<b>hose barbs (ID inner Ø) female contacts,</b> with shut-off valve with shut-off valve with shut-off valve		<b>CX 3.0 MPV</b> <b>CX 4.0 MPV</b> <b>CX 6.0 MPV</b>

- UL, CSA, DNV-GL, BV pending
- insulation resistance: ≥ 10 GΩ
- made of self-extinguishing thermoplastic resin UL 94V-0
- **mechanical life:**  
≥ 10.000 cycles  
**with HNM frame and HNM enclosures**  
≥ 500 cycles  
**with MIXO frames and standard enclosures**
- working temperature range - 40 °C + + 80 °C

**Use of units for metal pneumatic contacts**

- identical male and female modular units
- pneumatic contacts for pressure values up to 10 bar, for use with clean and dry compressed air
- use of tubes with Ø 3 - 4 and 6 mm (ID inner Ø for hose barbs contacts, OD outer Ø for quick-fitting contacts), and possible replacement of tubes with assembled units
- possibility of using tubes with different diameters in the same modular unit
- female contacts with or without closing valve
- working temperature range - 40 °C + + 80 °C
- **CMPEs** removal tool \*

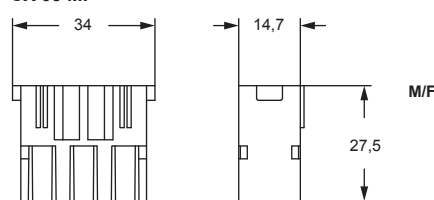
\* **CMPEs** removal tool



**Warnings:**

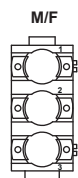
- CRM/F CX coding and guiding pins must be used for pneumatic contacts modules.
- These pins also provide coding if pneumatic contacts modules are used exclusively.
- The use of pneumatic contacts requires an appropriate filtering and dehydration system to prevent dangerous condensation.

**CX 03 MP**



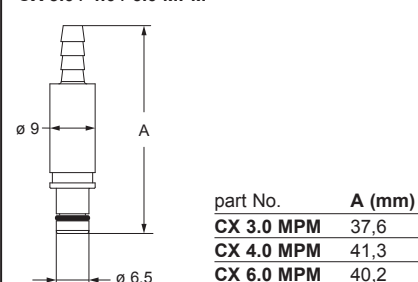
contacts side (front view)

side with reference arrow ▲

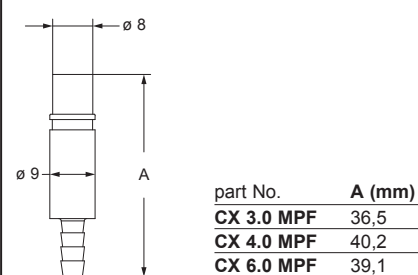


- 1 frame slot

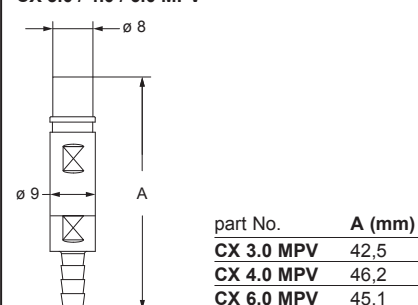
**CX 3.0 / 4.0 / 6.0 MPM**



**CX 3.0 / 4.0 / 6.0 MPF**



**CX 3.0 / 4.0 / 6.0 MPV**



metal pneumatic contacts, straight  
quick-fitting  
tube OD outer Ø 3 - 4 - 6 mm



FROM OCTOBER 2021

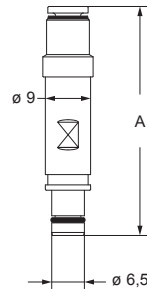
metal pneumatic contacts, angled  
quick-fitting  
tube OD outer Ø 3 - 4 - 6 mm



FROM OCTOBER 2021

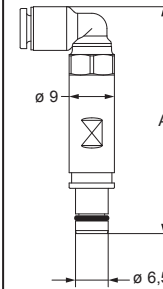
description	part No.	part No.
quick-fitting (OD outer Ø) male contacts, without shut-off valve without shut-off valve without shut-off valve	straight CX 3.0 MPQM CX 4.0 MPQM CX 6.0 MPQM	angled CX 3.0 MPAM CX 4.0 MPAM CX 6.0 MPAM
quick-fitting (OD outer Ø) female contacts, without shut-off valve without shut-off valve without shut-off valve	straight CX 3.0 MPQF CX 4.0 MPQF CX 6.0 MPQF	angled CX 3.0 MPAF CX 4.0 MPAF CX 6.0 MPAF
quick-fitting (OD outer Ø) female contacts, with shut-off valve with shut-off valve with shut-off valve	straight CX 3.0 MPQV CX 4.0 MPQV CX 6.0 MPQV	angled CX 3.0 MPAV CX 4.0 MPAV CX 6.0 MPAV

CX 3.0 / 4.0 / 6.0 MPQM



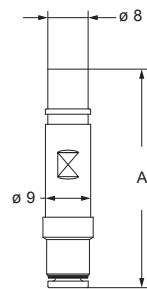
part No.	A (mm)
CX 3.0 MPQM	45,5
CX 4.0 MPQM	45,5
CX 6.0 MPQM	47,5

CX 3.0 / 4.0 / 6.0 MPAM



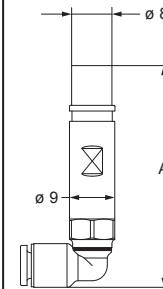
part No.	A (mm)
CX 3.0 MPAM	45,5
CX 4.0 MPAM	45,1
CX 6.0 MPAM	47,5

CX 3.0 / 4.0 / 6.0 MPQF



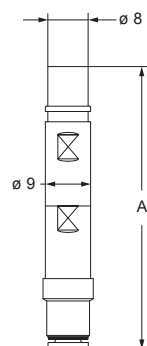
part No.	A (mm)
CX 3.0 MPQF	44,4
CX 4.0 MPQF	43,4
CX 6.0 MPQF	46,4

CX 3.0 / 4.0 / 6.0 MPAF



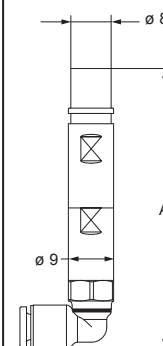
part No.	A (mm)
CX 3.0 MPAF	44,4
CX 4.0 MPAF	44,0
CX 6.0 MPAF	46,4

CX 3.0 / 4.0 / 6.0 MPQV



part No.	A (mm)
CX 3.0 MPQV	48,7
CX 4.0 MPQV	56,2
CX 6.0 MPQV	58,2

CX 3.0 / 4.0 / 6.0 MPAV



part No.	A (mm)
CX 3.0 MPAV	48,7
CX 4.0 MPAV	55,8
CX 6.0 MPAV	58,2



# CX 03 P – CX 02 P für Pneumatikkontakte

Die Modulareinsätze sind in die dafür vorgesehenen Halterahmen zu montieren, die dann in Aluminiumdruckguss-, Kunststoffgehäuse oder Komponenten des COB-Systems eingebaut werden können. Modulareinsätze einfacher Breite können direkt in MIXO ONE Gehäuse montiert werden.

	Seite:
Halterahmen für Modulareinsätze	316 – 317
MIXO ONE Gehäuse	369

## Modulareinsätze mit 3 Kammern



## Modulareinsätze mit 2 Kammern



Beschreibung	Artikelbezeichnung	Artikelbezeichnung
--------------	--------------------	--------------------

Die Pneumatikkontakte sind separat zu bestellen  
Einsätze mit 3 Kammern für Schläuche Ø 1,6 – 4,0 (mm) **CX 03 P**

Die Pneumatikkontakte sind separat zu bestellen  
Einsätze mit 2 Kammern für Schläuche Ø 6,0 (mm) **CX 02 P**

- zertifiziert
- Isolationswiderstand:  $\geq 10 \text{ G}\Omega$
- Die Kontakteinsätze werden aus selbstverlöschendem Thermoplastharz UL 94V-0 hergestellt
- Mechanische Lebensdauer:  $\geq 500$  Zyklen

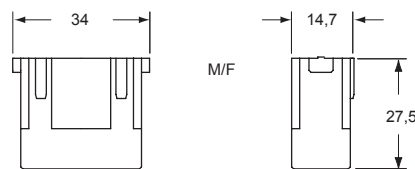
### Verwendung der Pneumatikkontakte

- Modulareinsatz ist identisch für Stift- oder Buchsenkontakte
- Pneumatikkontakte für Drücke bis zu 8 bar, für Anwendung mit aufbereiteter Druckluft
- Verwendung von Schläuchen mit Ø 1,6 – 3 – 4 und 6 mm; Schlauchwechsel bei montierten Einsätzen ist möglich
- Verwendung von Schläuchen mit verschiedenen Durchmessern im gleichen Modulareinsatz ist möglich
- Buchsenkontakte mit oder ohne Absperrung
- Betriebsgrenztemperaturen:  $-40 \text{ }^\circ\text{C}$  bis  $+80 \text{ }^\circ\text{C}$

### Anmerkung:

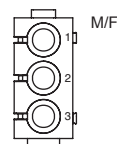
Die Verwendung von Codierstiften CRM/F CX in Verbindung mit Pneumatikmodulen ist zwingend erforderlich, um eine einwandfreie Führung der Kontakte zu gewährleisten.

Die Benutzung von Pneumatikkontakten erfordert die Installation einer Wartungseinheit zur Trocknung und Reinigung der Luft, um Kondensat im Steckverbinder zu verhindern.  
Die Kontakte sind zugelassen bis max 8 bar/116 psi.

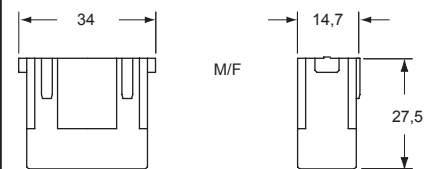


Ansicht der Steckseite

Seite mit Referenzpfeil ▲

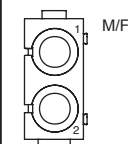


- 1 Modulplatz



Ansicht der Steckseite

Seite mit Referenzpfeil ▲



- 1 Modulplatz

### Pneumatikkontakte mit oder ohne Absperrung



#### Beschreibung

#### Artikelbezeichnung

Buchsenkontakte ohne Absperrung  
 - für Schläuche mit  $\varnothing$  innen 1,6 mm  
 - für Schläuche mit  $\varnothing$  innen 3 mm  
 - für Schläuche mit  $\varnothing$  innen 4 mm  
 - für Schläuche mit  $\varnothing$  innen 6 mm

**CX 1.6 PF**  
**CX 3.0 PF**  
**CX 4.0 PF**  
**CX 6.0 PF**

Stiftkontakte ohne Absperrung  
 - für Schläuche mit  $\varnothing$  innen 1,6 mm  
 - für Schläuche mit  $\varnothing$  innen 3 mm  
 - für Schläuche mit  $\varnothing$  innen 4 mm  
 - für Schläuche mit  $\varnothing$  innen 6 mm

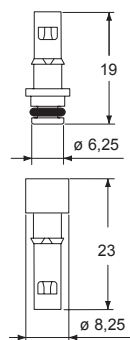
**CX 1.6 PM**  
**CX 3.0 PM**  
**CX 4.0 PM**  
**CX 6.0 PM**

Buchsenkontakte mit Absperrung  
 - für Schläuche mit  $\varnothing$  innen 1,6 mm  
 - für Schläuche mit  $\varnothing$  innen 3 mm  
 - für Schläuche mit  $\varnothing$  innen 4 mm  
 - für Schläuche mit  $\varnothing$  innen 6 mm

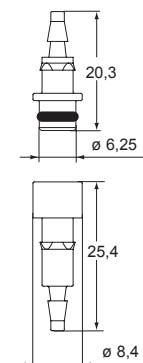
**CX 1.6 VC**  
**CX 3.0 VC**  
**CX 4.0 VC**  
**CX 6.0 VC**

Stiftkontakt  
 (bitte verwenden Sie Kontakte ohne Absperrung)

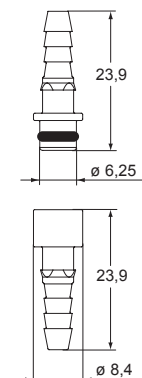
**CX 1.6 PF/PM/VC**



**CX 3.0 PF/PM/VC**



**CX 4.0 PF/PM/VC**



**CX 6.0 PF/PM/VC**

