

## TECHNICAL FEATURES

CHIX, CHPX, CHOX, CAOX, CAVX, MFOX, MFVX

CHIXW, CHPXW

- Variants of existing size "66.40" standard hoods, housings and covers (with 2 "Class" locking levers, with plastic handle) with a full metal **stainless steel resilient lever** (that one used in 180 °C high temperature enclosures size "44.27", same dimension) replacing the standard "Class" levers.
- Levers fitted with stainless steel rolls that reduce the wearing of corresponding pegs on the hood.
- Better fits the need for higher chemical resistance and higher mechanical resistance to impacts at very low temperature.

full metal stainless steel levers with stainless steel rolls to reduce wearing of the hood pegs



# CHIX - CHPX and MHPX C-TYPE standard version full metal locking levers

**inserts**

CD	50 poles + ⊕
CDD	76 poles + ⊕
CDA	32 poles + ⊕
CSAH	32 poles + ⊕
CDC	32 poles + ⊕

page:

71
80
102
103
106

insert dimensions:  
2 x (66 x 16) mm

**bulkhead mounting housings with 2 levers**



**FROM APRIL 2020**

**surface mounting housings with 2 levers**



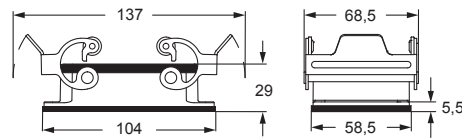
**FROM APRIL 2020**

refer to CN.19 pages

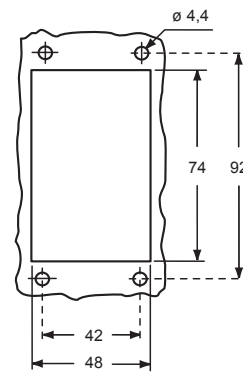
description	part No.	part No.	entry Pg	part No.	entry M
with full metal locking levers	<b>CHIX 50</b>				
with full metal locking levers		<b>CHPX 50.21</b>	21	<b>MHPX 50.32</b>	32
with full metal locking levers		<b>CHPX 50.29</b>	29		

The enclosures ensure IP66/IP69 degree of protection (or IP65 for cover versions) when mated and locked with the closing levers.

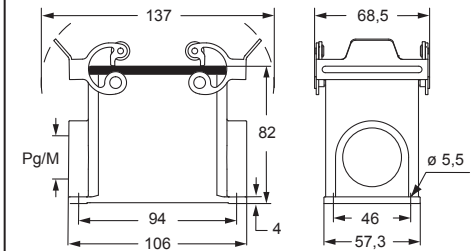
**CHIX**



panel cut-out for bulkhead mounting housings



**CHPX and MHPX**



cURus  
Type 4/4X/12  
pending



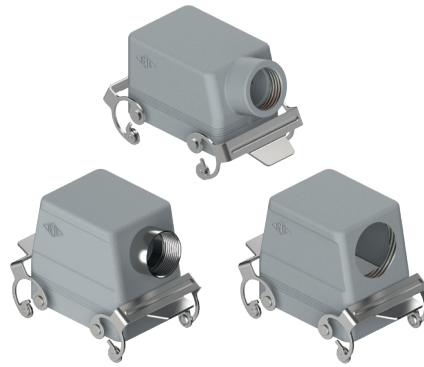


inserts		page:
CD	50 poles + ⊕	71
CDD	76 poles + ⊕	80
CDA	32 poles + ⊕	102
CSAH	32 poles + ⊕	103
CDC	32 poles + ⊕	106

insert dimensions:  
2 x (66 x 16) mm

refer to CN.19 pages

hoods with 2 levers



FROM APRIL 2020

hoods with 2 levers



FROM APRIL 2020

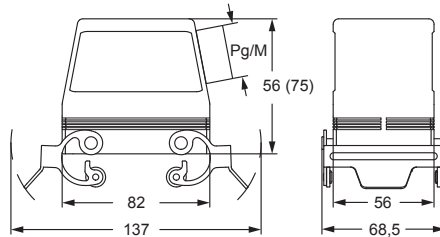
description	part No.	entry Pg	part No.	entry M	part No.	entry Pg	part No.	entry M
with full metal locking levers, side entry <sup>1)</sup>	<b>CHOX 50 X</b>	21	<b>MHOX 50 X32</b>	32				
with full metal locking levers, side entry, high construction <sup>1)</sup>	<b>CAOX 50 X29</b>	29	<b>MAOX 50 X32</b>	32				
with full metal locking levers, top entry, high construction <sup>1)</sup>					<b>CAVX 50 X29</b>	29	<b>MAVX 50 X32</b>	32
with full metal locking levers and gasket, top entry, high construction <sup>1)</sup>					<b>CAVX 50 G29</b>	29	<b>MAVX 50 G32</b>	32
with full metal locking levers, side entry, high construction without adapter <sup>1)2)</sup>			<b>MFOX 50 X32</b>	32				
with full metal locking levers, top entry, high construction without adapter <sup>1)2)</sup>							<b>MFVX 50 X32</b>	32

<sup>1)</sup> May be combined with enclosures:  
CHI 50 CS, CHP 50 CS and MHP 50 CS.

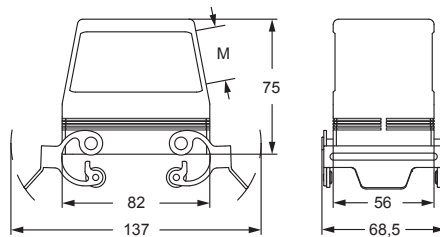
<sup>2)</sup> Enclosure without adapter, threaded on the body, to be used only with a complete cable gland.

☑ The enclosures ensure IP66/IP69 degree of protection (or IP65 for cover versions) when mated and locked with the closing levers.

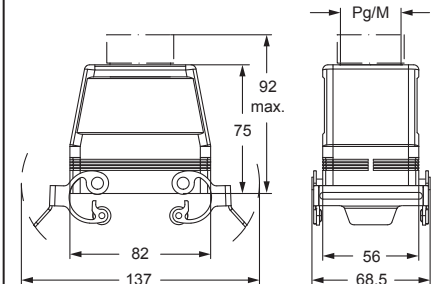
CHOX X (CAOX X) and MHOX X (MAOX X)



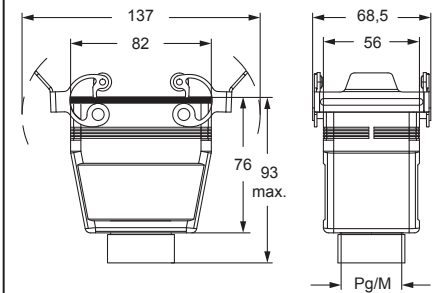
MFOX X



CAVX X and MAVX X - MFVX X



CAVX G and MAVX G



cURus  
Type 4/4X/12  
pending



# CHCX C-TYPE standard version full metal locking levers

inserts		page:	
CD	50 poles + ⊕		71
CDD	76 poles + ⊕		80
CDA	32 poles + ⊕		102
CSAH	32 poles + ⊕		103
CDC	32 poles + ⊕		106

insert dimensions:  
2 x (66 x 16) mm

covers

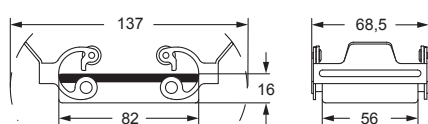


 FROM APRIL 2020

refer to CN.19 pages

description	part No.
-------------	----------

with 2 full metal locking levers and gasket (for hoods with 4 pegs) **CHCX 50 G**



cURus  
Type 4/4X/12  
pending



SIZE "66.40" ENCLOSURES WITH FULL METAL LOCKING LEVERS



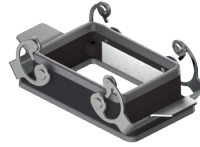
**CHIXW - CHPXW and MHPXW W-TYPE aggressive environments full metal locking levers**

inserts		page:
CD	50 poles + ⊕	71
CDD	76 poles + ⊕	80
CDA	32 poles + ⊕	102
CSAH	32 poles + ⊕	103
CDC	32 poles + ⊕	106

insert dimensions:  
2 x (66 x 16) mm

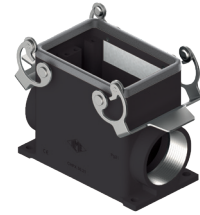
refer to CN.19 pages

**bulkhead mounting housings with 2 levers**



FROM APRIL 2020

**surface mounting housings with 2 levers**

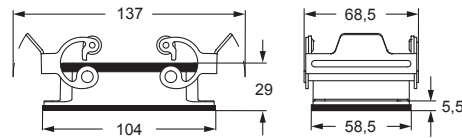


FROM APRIL 2020

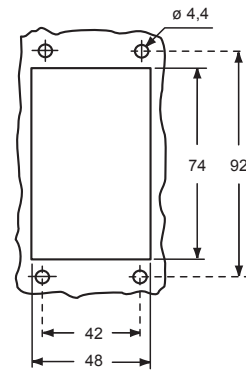
description	part No.	part No.	entry Pg	part No.	entry M
with full metal locking levers	<b>CHIXW 50</b>				
with full metal locking levers		<b>CHPXW 50.21</b>	21	<b>MHPXW 50.32</b>	32

☑ The enclosures ensure IP66/IP69 degree of protection (or IP65 for cover versions) when mated and locked with the closing levers.

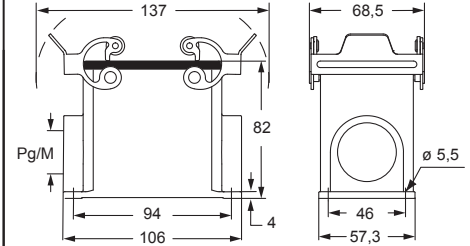
**CHIXW**



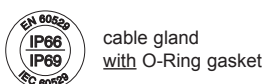
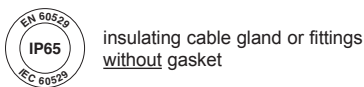
panel cut-out for bulkhead mounting housings



**CHPXW and MHPXW**



cURus  
Type 4/4X/12  
pending



# CHCXW W-TYPE aggressive environments full metal locking levers

inserts		page:	
CD	50 poles + ⊕		71
CDD	76 poles + ⊕		80
CDA	32 poles + ⊕		102
CSAH	32 poles + ⊕		103
CDC	32 poles + ⊕		106

insert dimensions:  
2 x (66 x 16) mm

covers

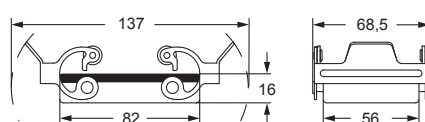


FROM APRIL 2020

refer to CN.19 pages

description	part No.
-------------	----------

with 2 full metal locking levers and gasket (for hoods with 4 pegs) **CHCXW 50 G**



cURus  
Type 4/4X/12  
pending

insulating cable gland or fittings  
without gasket

cable gland  
with O-Ring gasket