

## T-TYPE HYGIENIC

New, improved design for smoother locking levers and cleanproof logo



Safety, detectability  
and cleaning for food  
contamination prevention



Find out more  
[www.ilme.com](http://www.ilme.com)

# TECHNICAL FEATURES



Watch our technical clip

The **T-TYPE HYGIENIC** series (T-TYPE /H and T-TYPE /C) enclosures have been **improved** in their design to enhance their cleanability, thus reducing the likeliness of providing seat for dirt.

This has been achieved by a overhaul design of their locking levers, keeping its **sturdiness** and impeccable **locking function**, still made with blue coloured thermoplastic insulating material qualified for contact with food and resistant to the most popular cleaning agents, now also **metal-detectable**, in the remote event - frankly quite unlikely - of loss of parts of said levers in the food.

The **new design** of the T-TYPE HYGIENIC locking levers is characterized by:

- Q a “family air” shared with the new IL-BRID locking levers for standard metallic connector enclosures (see previous pages);
- Q the **smoothing** of any recess;

- Q the **remodelling** of any part possibly retaining dirt;
- Q the keeping of utmost **ergonomics**;
- Q the achieving of significant **reduction** in footprint, during movement, particularly on the angles.

Additionally, the ILME-striped logo, signature trait of the T-TYPE series hoods, has become a **smoothed, only slightly high relief and clean proof sign**, guaranteeing an even more cleanable surface compared to the previous bas-relief version.

The ILME logo improvement regards all T-TYPE variants, including the standard type and the T-TYPE /W, all sharing the same hoods. **Part numbers remain unchanged.** Zip code will be announced by a dedicated Product Info (also for standard T-TYPE and T-TYPE /W).

In addition to the models described in detail in the following pages, all **surface mounting housings with both M cable entries opened** and all hoods and **housings with preassembled CR ... BPE protective earth jumpers** are available. See [Table below](#) for all part Nos.

Variants with preassembled **CR ... BPE** protective earth jumpers are available for **all series T-TYPE** hoods and housings, **including also standard types and T-TYPE /W**. Their part number is the same of base model plus **letter B** at the end, as shown – for T-TYPE HYGIENIC models only – in the table below.

| Size   | Cable outlet | Locking lever | T-TYPE HYGIENIC /H |             | T-TYPE HYGIENIC Cold /C |             |
|--------|--------------|---------------|--------------------|-------------|-------------------------|-------------|
|        |              |               | part No.           | part No.*   | part No.                | part No.*   |
| 44.27  | -            | single        | THIH 06 L          | THIH 06 LB  | THIC 06 L               | THIC 06 LB  |
| 57.27  | -            | double        | THIH 10            | THIH 10 B   | THIC 10                 | THIC 10 B   |
| 77.27  | -            |               | THIH 16            | THIH 16 B   | THIC 16                 | THIC 16 B   |
| 104.27 | -            |               | THIH 24            | THIH 24 B   | THIC 24                 | THIC 24 B   |
| 44.27  | M25          | single        | TAPH 06 L25        | TAPH 06L25B | TAPC 06 L25             | TAPC 06L25B |
|        | M32          |               | TAPH 06 L32        | TAPH 06L32B | TAPC 06 L32             | TAPC 06L32B |
|        | 2xM25        |               | TAPH 06 L225       | TAPH06L225B | TAPC 06 L225            | TAPC06L225B |
|        | 2xM32        |               | TAPH 06 L232       | TAPH06L232B | TAPC 06 L232            | TAPC06L232B |
| 57.27  | M25          | double        | TAPH 10.25         | TAPH 10.25B | TAPC 10.25              | TAPC 10.25B |
|        | M32          |               | TAPH 10.32         | TAPH 10.32B | TAPC 10.32              | TAPC 10.32B |
|        | 2xM25        |               | TAPH 10.225        | TAPH10.225B | TAPC 10.225             | TAPC10.225B |
|        | 2xM32        |               | TAPH 10.232        | TAPH10.232B | TAPC 10.232             | TAPC10.232B |
| 77.27  | M32          | double        | TAPH 16.32         | TAPH 16.32B | TAPC 16.32              | TAPC 16.32B |
|        | M40          |               | TAPH 16.40         | TAPH 16.40B | TAPC 16.40              | TAPC 16.40B |
|        | 2xM32        |               | TAPH 16.232        | TAPH16.232B | TAPC 16.232             | TAPC16.232B |
|        | 2xM40        |               | TAPH 16.240        | TAPH16.240B | TAPC 16.240             | TAPC16.240B |
| 104.27 | M32          | double        | TAPH 24.32         | TAPH 24.32B | TAPC 24.32              | TAPC 24.32B |
|        | M40          |               | TAPH 24.40         | TAPH 24.40B | TAPC 24.40              | TAPC 24.40B |
|        | 2xM32        |               | TAPH 24.232        | TAPH24.232B | TAPC 24.232             | TAPC24.232B |
|        | 2xM40        |               | TAPH 24.240        | TAPH24.240B | TAPC 24.240             | TAPC24.240B |
| 44.27  | M25          | single        | TAVH 06 LG25       | TAVH06LG25B | TAVC 06 LG25            | TAVC06LG25B |
|        | M32          |               | TAVH 06 LG32       | TAVH06LG32B | TAVC 06 LG32            | TAVC06LG32B |
| 57.27  | M25          | double        | TAVH 10 G25        | TAVH 10G25B | TAVC 10 G25             | TAVC 10G25B |
|        | M32          |               | TAVH 10 G32        | TAVH 10G32B | TAVC 10 G32             | TAVC 10G32B |
| 77.27  | M32          |               | TAVH 16 G32        | TAVH 16G32B | TAVC 16 G32             | TAVC 16G32B |
|        | M40          |               | TAVH 16 G40        | TAVH 16G40B | TAVC 16 G40             | TAVC 16G40B |
| 104.27 | M32          | double        | TAVH 24 G32        | TAVH 24G32B | TAVC 24 G32             | TAVC 24G32B |
|        | M40          |               | TAVH 24 G40        | TAVH 24G40B | TAVC 24 G40             | TAVC 24G40B |

\* Enclosures with protective earth jumpers CR...BPE preassembled with part No. of base model plus **letter B** at the end.

| Size   | With loop | Locking lever | Covers for T-TYPE HYGIENIC | Covers for T-TYPE HYGIENIC Cold |
|--------|-----------|---------------|----------------------------|---------------------------------|
|        |           |               | part No.                   | part No.                        |
| 44.27  |           | single        | THCH 06 LG                 | THCC 06 LG                      |
| 57.27  |           | double        | THCH 10 G                  | THCC 10 G                       |
| 77.27  |           |               | THCH 16 G                  | THCC 16 G                       |
| 104.27 |           |               | THCH 24 G                  | THCC 24 G                       |

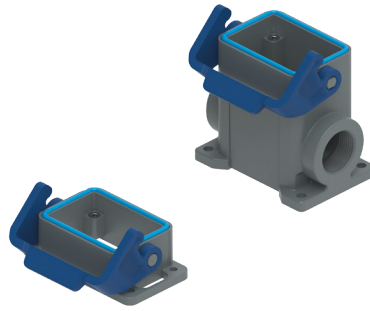
# T-TYPE / H for production lines HYGIENIC SERIES

|                  |              |           |
|------------------|--------------|-----------|
| inserts          |              | page:     |
| CDD              | 24 poles + ⊕ | 76        |
| CDS              | 9 poles + ⊕  | -         |
| CDSH             | 9 poles + ⊕  | 86        |
| CDSH NC          | 6 poles + ⊕  | 95        |
| CNE              | 6 poles + ⊕  | 110       |
| CSE              | 6 poles + ⊕  | -         |
| CSH              | 6 poles + ⊕  | 110       |
| CSH S            | 6 poles + ⊕  | 122       |
| CCE              | 6 poles + ⊕  | 130       |
| CSS              | 6 poles + ⊕  | 148       |
| CT, CTSE (16 A)* | 6 poles + ⊕  | 160       |
| CQE              | 10 poles + ⊕ | 168       |
| MIXO             | 2 modules    | 262 - 317 |

\* only for standard insulating version THIH

refer to CN.19 pages

## housings with single lever HNBR gasket



FROM JULY 2022

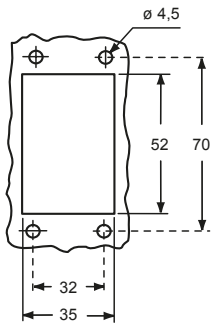
## hoods with 2 pegs



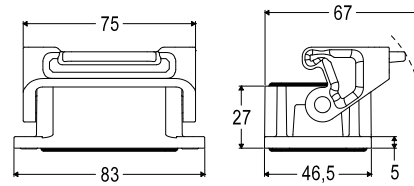
FROM JULY 2022

| description                                                          | part No.           | entry<br>M | part No.           | entry<br>M |
|----------------------------------------------------------------------|--------------------|------------|--------------------|------------|
| bulkhead mounting housing with thermoplastic lever                   | <b>THIH 06 L</b>   |            |                    |            |
| surface mounting housing with thermoplastic lever, high construction | <b>TAPH 06 L25</b> | 25         |                    |            |
| surface mounting housing with thermoplastic lever, high construction | <b>TAPH 06 L32</b> | 32         |                    |            |
| with pegs, side entry, high construction                             |                    |            | <b>TMAO 06 L25</b> | 25         |
| with pegs, side entry, high construction                             |                    |            | <b>TMAO 06 L32</b> | 32         |
| with pegs, top entry, high construction                              |                    |            | <b>TMAV 06 L25</b> | 25         |
| with pegs, top entry, high construction                              |                    |            | <b>TMAV 06 L32</b> | 32         |

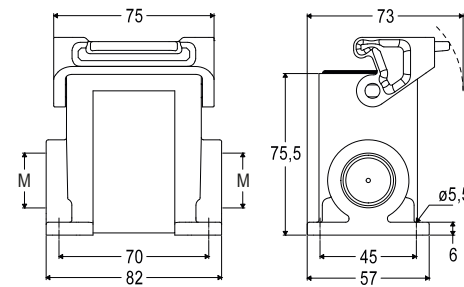
### panel cut-out for bulkhead mounting housings



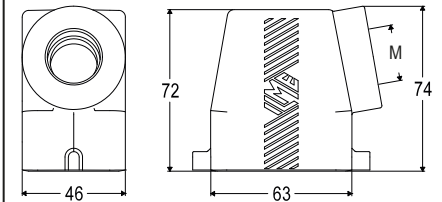
### THIH L



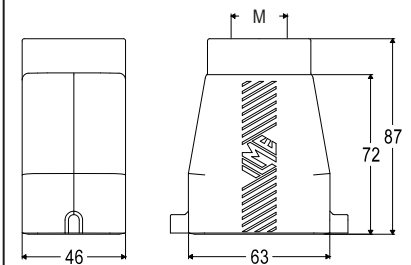
### TAPH L



### TMAO L



### TMAV L



(\*) The surface mounting, high construction housings are supplied with an open threaded entry (→) and diametrically opposite a closed threaded entry which can be opened by the user if required (with suitable tool).

cURus  
Type 12 pending



ambient temperature limits -40 °C / +70 °C

# T-TYPE / H for production lines HYGIENIC SERIES

|                  |              |              |
|------------------|--------------|--------------|
| <b>inserts</b>   |              | <b>page:</b> |
| CDD              | 24 poles + ⊕ | 76           |
| CDS              | 9 poles + ⊕  | -            |
| CDSH             | 9 poles + ⊕  | 86           |
| CDSH NC          | 6 poles + ⊕  | 95           |
| CNE              | 6 poles + ⊕  | 110          |
| CSE              | 6 poles + ⊕  | -            |
| CSH              | 6 poles + ⊕  | 110          |
| CSH S            | 6 poles + ⊕  | 122          |
| CCE              | 6 poles + ⊕  | 130          |
| CSS              | 6 poles + ⊕  | 148          |
| CT, CTSE (16 A)* | 6 poles + ⊕  | 160          |
| CQE              | 10 poles + ⊕ | 168          |
| MIXO             | 2 modules    | 262 - 317    |

\* only for standard insulating version TCHC

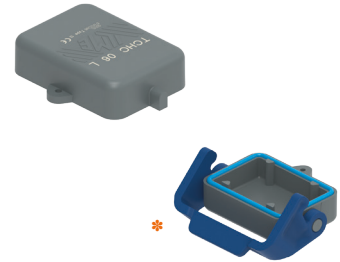
refer to CN.19 pages

## hoods with single lever top entry, HNBR gasket



**FROM JULY 2022**

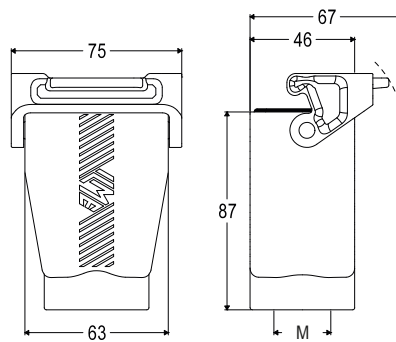
## covers HNBR gasket



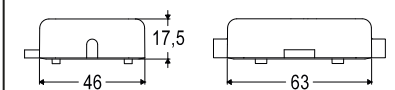
**FROM JULY 2022\***

| description                                                      | part No.            | entry M | part No. (with eyelet) | part No. (with loop) |
|------------------------------------------------------------------|---------------------|---------|------------------------|----------------------|
| with thermoplastic lever and gasket, high construction           | <b>TAVH 06 LG25</b> | 25      |                        |                      |
| with thermoplastic lever and gasket, high construction with pegs | <b>TAVH 06 LG32</b> | 32      |                        |                      |
| with thermoplastic lever and gasket                              |                     |         | <b>TCHC 06 L</b>       | <b>TCHC 06 SL</b>    |
|                                                                  |                     |         |                        | <b>THCH 06 LG *</b>  |

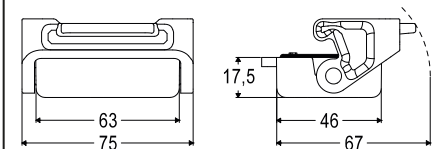
**TAVH LG**



**TCHC L (SL)**

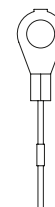


**THCH LG**



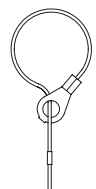
For fixing on housings

eyelet



For fixing on hoods

loop



cURus  
Type 12 pending



ambient temperature limits -40 °C / +70 °C

# T-TYPE / H for production lines HYGIENIC SERIES

**inserts**

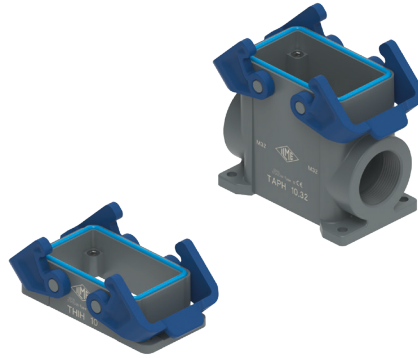
|                  |                     |           |
|------------------|---------------------|-----------|
| CDD              | 42 poles + ⊕        | 78        |
| CDS              | 18 poles + ⊕        | -         |
| CDSH             | 18 poles + ⊕        | 87        |
| CNE              | 10 poles + ⊕        | 111       |
| CSE              | 10 poles + ⊕        | -         |
| CSH              | 10 poles + ⊕        | 111       |
| CSH S            | 10 poles + ⊕        | 123       |
| CCE              | 10 poles + ⊕        | 131       |
| CMSH             | 3+2 (aux) poles + ⊕ | 136       |
| CMCE             | 3+2 (aux) poles + ⊕ | 137       |
| CSS              | 10 poles + ⊕        | 149       |
| CT, CTSE (16 A)* | 10 poles + ⊕        | 161       |
| CQE              | 18 poles + ⊕        | 169       |
| CX               | 8/24 poles + ⊕      | 194       |
| MIXO             | 3 modules           | 262 - 317 |

\* only for standard insulating version THIH

refer to CN.19 pages

page:

**housings with 2 levers  
HNBR gasket**



**FROM JULY 2022**

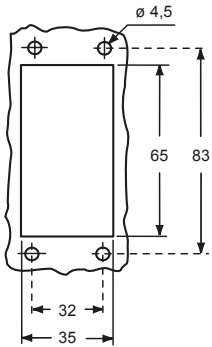
**hoods with 4 pegs**



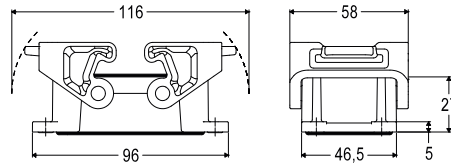
**FROM JULY 2022**

| description                                                       | part No.          | entry<br>M | part No.          | entry<br>M |
|-------------------------------------------------------------------|-------------------|------------|-------------------|------------|
| bulkhead mounting housing with thermoplastic levers               | <b>THIH 10</b>    |            |                   |            |
| surface mounting housing, thermoplastic levers, high construction | <b>TAPH 10.25</b> | 25         | <b>TMAO 10.25</b> | 25         |
| surface mounting housing, thermoplastic levers, high construction | <b>TAPH 10.32</b> | 32         | <b>TMAO 10.32</b> | 32         |
| with pegs, side entry, high construction                          |                   |            | <b>TMAV 10.25</b> | 25         |
| with pegs, side entry, high construction                          |                   |            | <b>TMAV 10.32</b> | 32         |
| with pegs, top entry, high construction                           |                   |            |                   |            |
| with pegs, top entry, high construction                           |                   |            |                   |            |

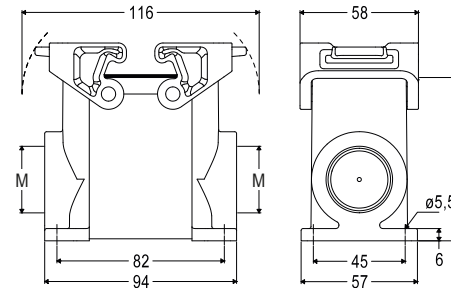
panel cut-out for bulkhead mounting housings



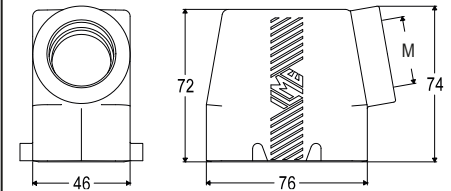
**THIH**



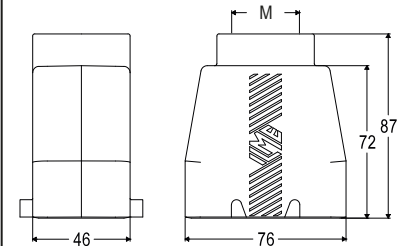
**TAPH**



**TMAO**



**TMAV**



The surface mounting, high construction housings are supplied with an open threaded entry and diametrically opposite a closed threaded entry which can be opened by the user if required (with suitable tool).

cURus  
Type 12 pending



ambient temperature limits -40 °C / +70 °C

# T-TYPE / H for production lines HYGIENIC SERIES

| inserts          |                     | page:     |
|------------------|---------------------|-----------|
| CDD              | 42 poles + ⊕        | 78        |
| CDS              | 18 poles + ⊕        | -         |
| CDSH             | 18 poles + ⊕        | 87        |
| CNE              | 10 poles + ⊕        | 111       |
| CSE              | 10 poles + ⊕        | -         |
| CSH              | 10 poles + ⊕        | 111       |
| CSH S            | 10 poles + ⊕        | 123       |
| CCE              | 10 poles + ⊕        | 131       |
| CMSH             | 3+2 (aux) poles + ⊕ | 136       |
| CMCE             | 3+2 (aux) poles + ⊕ | 137       |
| CSS              | 10 poles + ⊕        | 149       |
| CT, CTSE (16 A)* | 10 poles + ⊕        | 161       |
| CQE              | 18 poles + ⊕        | 169       |
| CX               | 8/24 poles + ⊕      | 194       |
| MIXO             | 3 modules           | 262 - 317 |

\* only for standard insulating version TCHC

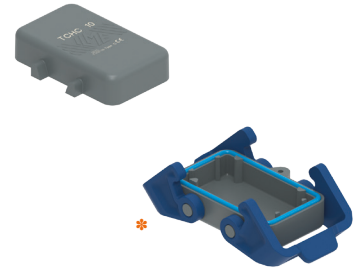
refer to CN.19 pages

## hoods with 2 levers top entry, HNBR gasket



FROM JULY 2022

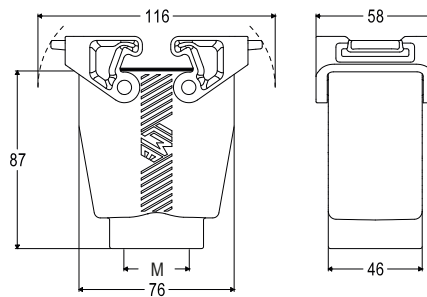
## covers HNBR gasket



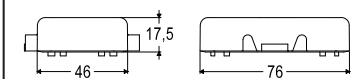
FROM JULY 2022\*

| description                                             | part No.           | entry<br>M | part No.<br>(with eyelet) | part No.<br>(with loop) |
|---------------------------------------------------------|--------------------|------------|---------------------------|-------------------------|
| with thermoplastic levers and gasket, high construction | <b>TAVH 10 G25</b> | 25         | <b>TCHC 10</b>            | <b>TCHC 10 S</b>        |
| with thermoplastic levers and gasket, high construction | <b>TAVH 10 G32</b> | 32         |                           |                         |
| with 4 pegs                                             |                    |            |                           | <b>THCH 10 G *</b>      |
| with 2 thermoplastic levers and gasket                  |                    |            |                           |                         |

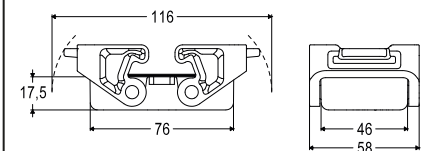
TAVH G



TCHC (S)



THCH G



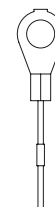
cURus  
Type 12 pending



ambient temperature limits -40 °C / +70 °C

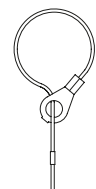
For fixing  
on housings

eyelet



For fixing  
on hoods

loop



# T-TYPE / H for production lines HYGIENIC SERIES

inserts

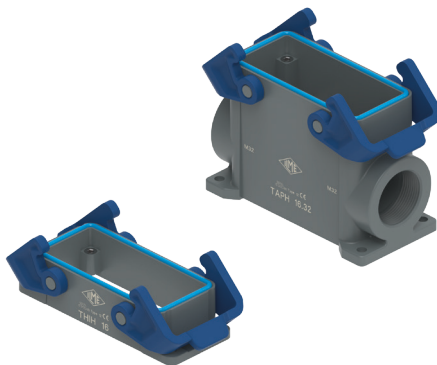
|                  |                               |           |
|------------------|-------------------------------|-----------|
| CD               | 40 poles + ⊕                  | 70        |
| CDD              | 72 poles + ⊕                  | 79        |
| CDS              | 27 poles + ⊕                  | -         |
| CDSH             | 27 poles + ⊕                  | 88        |
| CNE              | 16 poles + ⊕                  | 112       |
| CSE              | 16 poles + ⊕                  | -         |
| CSH              | 16 poles + ⊕                  | 112       |
| CSH S            | 16 poles + ⊕                  | 124       |
| CCE              | 16 poles + ⊕                  | 132       |
| CM SH, CMCE      | 6+2 (aux) poles + ⊕           | 138 - 139 |
| CSS              | 16 poles + ⊕                  | 150       |
| CT, CTSE (16 A)* | 16 poles + ⊕                  | 162       |
| CQE              | 32 poles + ⊕                  | 170       |
| CQEE             | 40 poles + ⊕                  | 176       |
| CP               | 6 poles + ⊕                   | 178       |
| CX               | 6/12, 6/36 and 12/2 poles + ⊕ | 197 - 199 |
| CX               | 4/0 and 4/2 poles + ⊕         | 200 - 201 |

\* only for standard insulating version THIH

refer to CN.19 pages

page:

housings with 2 levers  
HNBR gasket



FROM JULY 2022

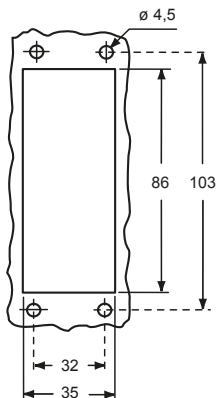
hoods with 4 pegs



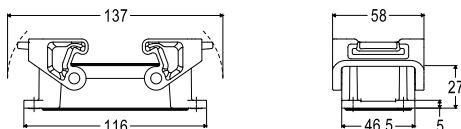
FROM JULY 2022

| description                                                       | part No.          | entry M | part No.          | entry M |
|-------------------------------------------------------------------|-------------------|---------|-------------------|---------|
| bulkhead mounting housing with thermoplastic levers               | <b>THIH 16</b>    |         |                   |         |
| surface mounting housing, thermoplastic levers, high construction | <b>TAPH 16.32</b> | 32      |                   |         |
| surface mounting housing, thermoplastic levers, high construction | <b>TAPH 16.40</b> | 40      |                   |         |
| with pegs, side entry, high construction                          |                   |         | <b>TMAO 16.32</b> | 32      |
| with pegs, side entry, high construction                          |                   |         | <b>TMAO 16.40</b> | 40      |
| with pegs, top entry, high construction                           |                   |         | <b>TMAV 16.32</b> | 32      |
| with pegs, top entry, high construction                           |                   |         | <b>TMAV 16.40</b> | 40      |

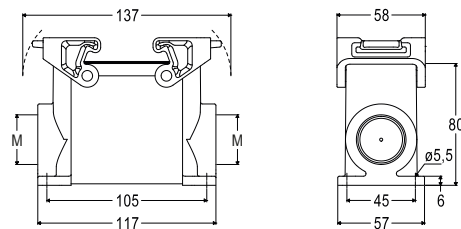
panel cut-out for bulkhead mounting housings



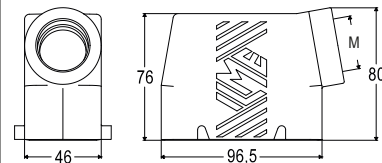
THIH



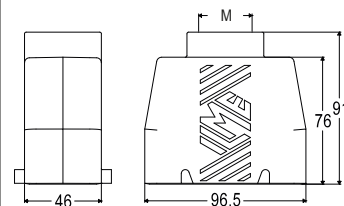
TAPH



TMAO



TMAV



The surface mounting, high construction housings are supplied with an open threaded entry and diametrically opposite a closed threaded entry which can be opened by the user if required (with suitable tool).

cURus  
Type 12 pending



ambient temperature limits -40 °C / +70 °C

# T-TYPE / H for production lines HYGIENIC SERIES

|                  |                               |              |
|------------------|-------------------------------|--------------|
| <b>inserts</b>   |                               | <b>page:</b> |
| CD               | 40 poles + ⊕                  | 70           |
| CDD              | 72 poles + ⊕                  | 79           |
| CDS              | 27 poles + ⊕                  | -            |
| CDSH             | 27 poles + ⊕                  | 88           |
| CNE              | 16 poles + ⊕                  | 112          |
| CSE              | 16 poles + ⊕                  | -            |
| CSH              | 16 poles + ⊕                  | 112          |
| CSH S            | 16 poles + ⊕                  | 124          |
| CCE              | 16 poles + ⊕                  | 132          |
| CMSH, CMCE       | 6+2 (aux) poles + ⊕           | 138 - 139    |
| CSS              | 16 poles + ⊕                  | 150          |
| CT, CTSE (16 A)* | 16 poles + ⊕                  | 162          |
| CQE              | 32 poles + ⊕                  | 170          |
| CQEE             | 40 poles + ⊕                  | 176          |
| CP               | 6 poles + ⊕                   | 178          |
| CX               | 6/12, 6/36 and 12/2 poles + ⊕ | 197 - 199    |
| CX               | 4/0 and 4/2 poles + ⊕         | 200 - 201    |

\* only for standard insulating version TCHc

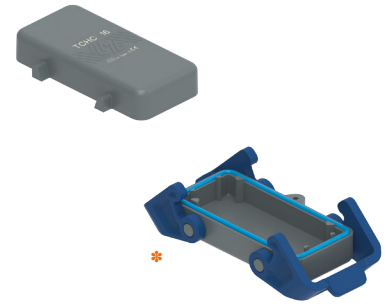
refer to CN.19 pages

## hoods with 2 levers top entry, HNBR gasket



**FROM JULY 2022**

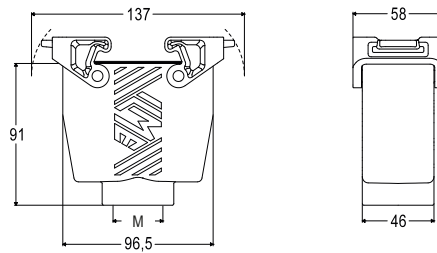
## covers HNBR gasket



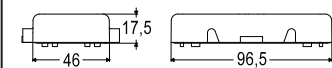
**FROM JULY 2022\***

| description                                             | part No.           | entry<br>M | part No.<br>(with eyelet) | part No.<br>(with loop) |
|---------------------------------------------------------|--------------------|------------|---------------------------|-------------------------|
| with thermoplastic levers and gasket, high construction | <b>TAVH 16 G32</b> | 32         |                           |                         |
| with thermoplastic levers and gasket, high construction | <b>TAVH 16 G40</b> | 40         |                           |                         |
| with 4 pegs                                             |                    |            | <b>TCHC 16</b>            | <b>TCHC 16 S</b>        |
| with 2 thermoplastic levers and gasket                  |                    |            |                           | <b>THCH 16 G *</b>      |

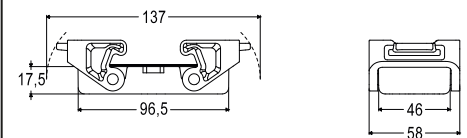
**TAVH G**



**TCHC (S)**



**THCH G**



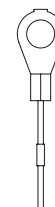
cURus  
Type 12 pending



ambient temperature limits -40 °C / +70 °C

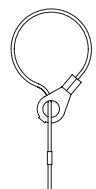
For fixing  
on housings

eyelet



For fixing  
on hoods

loop





# T-TYPE / H for production lines HYGIENIC SERIES

inserts

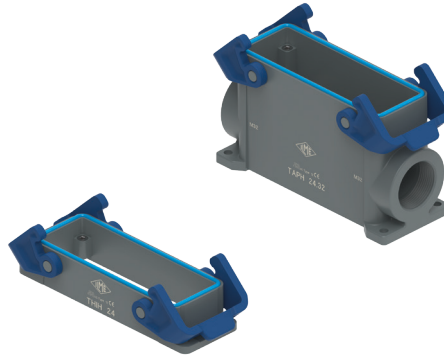
|                  |                       |           |
|------------------|-----------------------|-----------|
| CD               | 64 poles + ⊕          | 72        |
| CDD              | 108 poles + ⊕         | 81        |
| CDS              | 42 poles + ⊕          | -         |
| CDSH             | 42 poles + ⊕          | 89        |
| CNE              | 24 poles + ⊕          | 113       |
| CSE              | 24 poles + ⊕          | -         |
| CSH              | 24 poles + ⊕          | 113       |
| CSH S            | 24 poles + ⊕          | 125       |
| CCE              | 24 poles + ⊕          | 133       |
| CMSH             | 10+2 (aux) poles + ⊕  | 140       |
| CMCE             | 10+2 (aux) poles + ⊕  | 141       |
| CSS              | 24 poles + ⊕          | 151       |
| CT, CTSE (16 A)* | 24 poles + ⊕          | 163       |
| CQE              | 46 poles + ⊕          | 171       |
| CQEE             | 64 poles + ⊕          | 177       |
| CX               | 4/8 and 6/6 poles + ⊕ | 204, 206  |
| MIXO             | 6 modules             | 262 - 317 |

\* only for standard insulating version THIH

refer to CN.19 pages

page:

housings with 2 levers  
 HNBR gasket



FROM JULY 2022

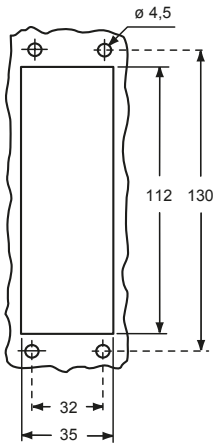
hoods with 4 pegs



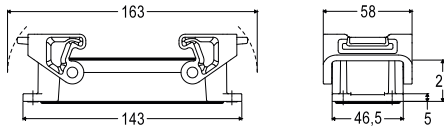
FROM JULY 2022

| description                                                       | part No.          | entry M | part No.          | entry M |
|-------------------------------------------------------------------|-------------------|---------|-------------------|---------|
| bulkhead mounting housing with thermoplastic levers               | <b>THIH 24</b>    |         |                   |         |
| surface mounting housing, thermoplastic levers, high construction | <b>TAPH 24.32</b> | 32      |                   |         |
| surface mounting housing, thermoplastic levers, high construction | <b>TAPH 24.40</b> | 40      |                   |         |
| with pegs, side entry, high construction                          |                   |         | <b>TMAO 24.32</b> | 32      |
| with pegs, side entry, high construction                          |                   |         | <b>TMAO 24.40</b> | 40      |
| with pegs, top entry, high construction                           |                   |         | <b>TMAV 24.32</b> | 32      |
| with pegs, top entry, high construction                           |                   |         | <b>TMAV 24.40</b> | 40      |

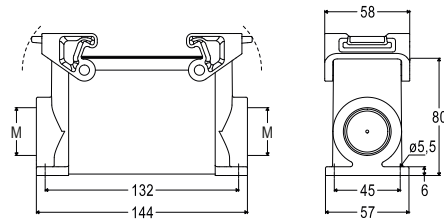
panel cut-out for bulkhead mounting housings



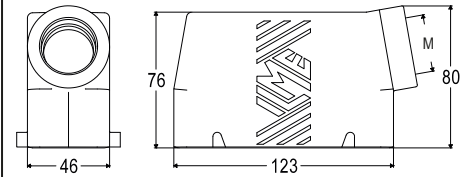
THIH



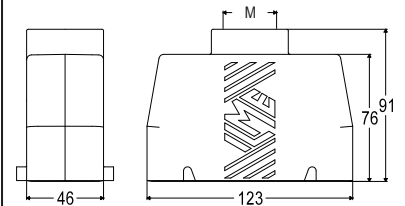
TAPH



TMAO



TMAV



The surface mounting, high construction housings are supplied with an open threaded entry and diametrically opposite a closed threaded entry which can be opened by the user if required (with suitable tool).

cURus  
Type 12 pending



ambient temperature limits -40 °C / +70 °C

# T-TYPE / H for production lines HYGIENIC SERIES

|                  |                       |              |
|------------------|-----------------------|--------------|
| <b>inserts</b>   |                       | <b>page:</b> |
| CD               | 64 poles + ⊕          | 72           |
| CDD              | 108 poles + ⊕         | 81           |
| CDS              | 42 poles + ⊕          | -            |
| CDSH             | 42 poles + ⊕          | 89           |
| CNE              | 24 poles + ⊕          | 113          |
| CSE              | 24 poles + ⊕          | -            |
| CSH              | 24 poles + ⊕          | 113          |
| CSH S            | 24 poles + ⊕          | 125          |
| CCE              | 24 poles + ⊕          | 133          |
| CMSH             | 10+2 (aux) poles + ⊕  | 140          |
| CMCE             | 10+2 (aux) poles + ⊕  | 141          |
| CSS              | 24 poles + ⊕          | 151          |
| CT, CTSE (16 A)* | 24 poles + ⊕          | 163          |
| CQE              | 46 poles + ⊕          | 171          |
| CQEE             | 64 poles + ⊕          | 177          |
| CX               | 4/8 and 6/6 poles + ⊕ | 204, 206     |
| MIXO             | 6 modules             | 262 - 317    |

\* only for standard insulating version TCHC

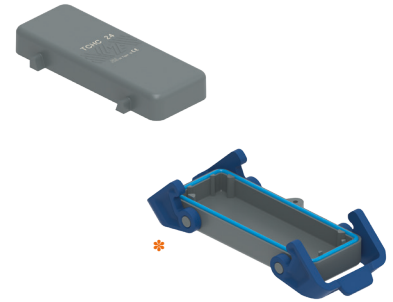
refer to CN.19 pages

## hoods with 2 levers top entry, HNBR gasket



FROM JULY 2022

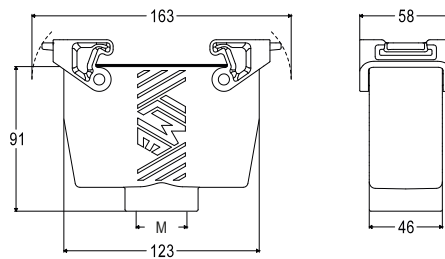
## covers HNBR gasket



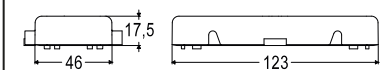
FROM JULY 2022\*

| description                                             | part No.           | entry<br>M | part No.<br>(with eyelet) | part No.<br>(with loop) |
|---------------------------------------------------------|--------------------|------------|---------------------------|-------------------------|
| with thermoplastic levers and gasket, high construction | <b>TAVH 24 G32</b> | 32         |                           |                         |
| with thermoplastic levers and gasket, high construction | <b>TAVH 24 G40</b> | 40         |                           |                         |
| with 4 pegs                                             |                    |            | <b>TCHC 24</b>            | <b>TCHC 24 S</b>        |
| with 2 thermoplastic levers and gasket                  |                    |            |                           | <b>THCH 24 G *</b>      |

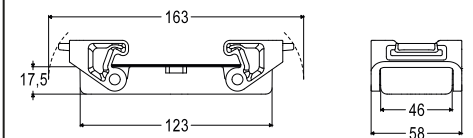
**TAVH G**



**TCHC (S)**



**THCH G**



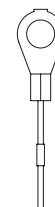
cURus  
Type 12 pending



ambient temperature limits -40 °C / +70 °C

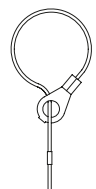
For fixing  
on housings

eyelet



For fixing  
on hoods

loop



# T-TYPE / C for low-temperature HYGIENIC SERIES

**inserts**

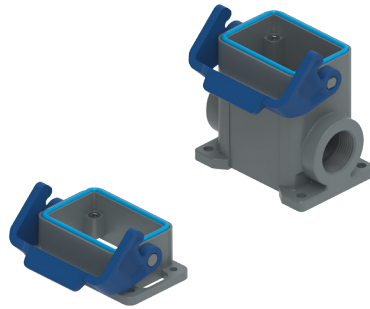
|                         |              |                  |
|-------------------------|--------------|------------------|
| <b>CDD</b>              | 24 poles + ⊕ | <b>76</b>        |
| <b>CDS</b>              | 9 poles + ⊕  | -                |
| <b>CDSH</b>             | 9 poles + ⊕  | <b>86</b>        |
| <b>CDSH NC</b>          | 6 poles + ⊕  | <b>95</b>        |
| <b>CNE</b>              | 6 poles + ⊕  | <b>110</b>       |
| <b>CSE</b>              | 6 poles + ⊕  | -                |
| <b>CSH</b>              | 6 poles + ⊕  | <b>110</b>       |
| <b>CSH S</b>            | 6 poles + ⊕  | <b>122</b>       |
| <b>CCE</b>              | 6 poles + ⊕  | <b>130</b>       |
| <b>CSS</b>              | 6 poles + ⊕  | <b>148</b>       |
| <b>CT, CTSE (16 A)*</b> | 6 poles + ⊕  | <b>160</b>       |
| <b>CQE</b>              | 10 poles + ⊕ | <b>168</b>       |
| <b>MIXO</b>             | 2 modules    | <b>262 - 317</b> |

\* only for standard insulating version THIH

refer to CN.19 pages

page:

**housings with 2 levers  
 SILICONE gasket**



**FROM JULY 2022**

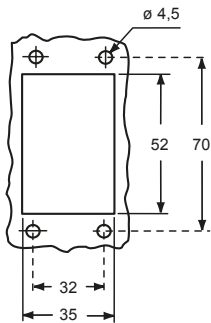
**hoods with 4 pegs**



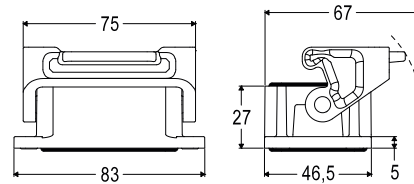
**FROM JULY 2022**

| description                                                          | part No.           | entry<br>M | part No.           | entry<br>M |
|----------------------------------------------------------------------|--------------------|------------|--------------------|------------|
| bulkhead mounting housing with thermoplastic lever                   | <b>THIC 06 L</b>   |            |                    |            |
| surface mounting housing with thermoplastic lever, high construction | <b>TAPC 06 L25</b> | 25         |                    |            |
| surface mounting housing with thermoplastic lever, high construction | <b>TAPC 06 L32</b> | 32         |                    |            |
| with pegs, side entry, high construction                             |                    |            | <b>TMAO 06 L25</b> | 25         |
| with pegs, side entry, high construction                             |                    |            | <b>TMAO 06 L32</b> | 32         |
| with pegs, top entry, high construction                              |                    |            | <b>TMAV 06 L25</b> | 25         |
| with pegs, top entry, high construction                              |                    |            | <b>TMAV 06 L32</b> | 32         |

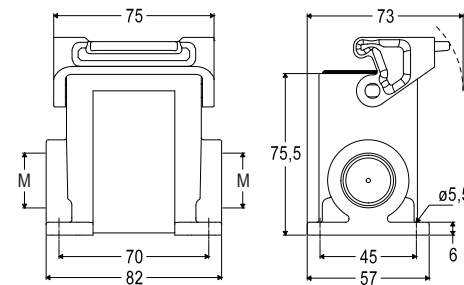
panel cut-out for bulkhead mounting housings



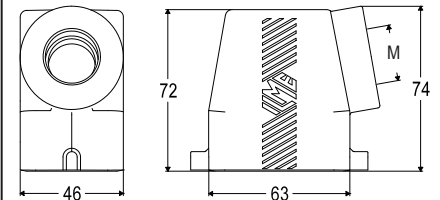
**THIC L**



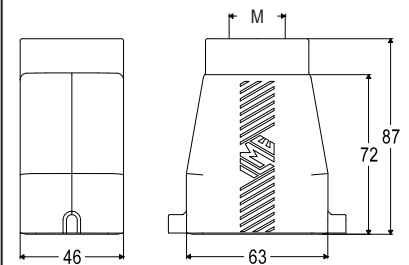
**TAPC L**



**TMAO L**



**TMAV L**



(\*) The surface mounting, high construction housings are supplied with an open threaded entry (→) and diametrically opposite a closed threaded entry which can be opened by the user if required (with suitable tool).

cURus  
Type 12 pending



ambient temperature limits -50 °C / +70 °C

# T-TYPE / C for low-temperature **HYGIENIC SERIES**

|                  |              |              |
|------------------|--------------|--------------|
| <b>inserts</b>   |              | <b>page:</b> |
| CDD              | 24 poles + ⊕ | 76           |
| CDS              | 9 poles + ⊕  | -            |
| CDSH             | 9 poles + ⊕  | 86           |
| CDSH NC          | 6 poles + ⊕  | 95           |
| CNE              | 6 poles + ⊕  | 110          |
| CSE              | 6 poles + ⊕  | -            |
| CSH              | 6 poles + ⊕  | 110          |
| CSH S            | 6 poles + ⊕  | 122          |
| CCE              | 6 poles + ⊕  | 130          |
| CSS              | 6 poles + ⊕  | 148          |
| CT, CTSE (16 A)* | 6 poles + ⊕  | 160          |
| CQE              | 10 poles + ⊕ | 168          |
| MIXO             | 2 modules    | 262 - 317    |

\* only for standard insulating version TCHC

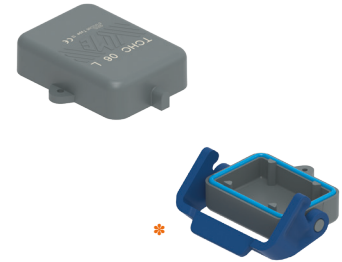
refer to CN.19 pages

## hoods with 2 levers, top entry SILICONE gasket



**FROM JULY 2022**

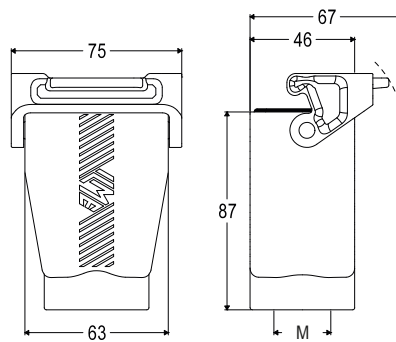
## covers SILICONE gasket



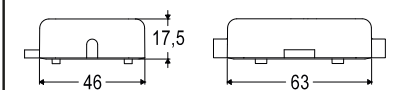
**FROM JULY 2022\***

| description                                            | part No.            | entry<br>M | part No.<br>(with eyelet) | part No.<br>(with loop) |
|--------------------------------------------------------|---------------------|------------|---------------------------|-------------------------|
| with thermoplastic lever and gasket, high construction | <b>TAVC 06 LG25</b> | 25         |                           |                         |
| with thermoplastic lever and gasket, high construction | <b>TAVC 06 LG32</b> | 32         |                           |                         |
| with pegs                                              |                     |            | <b>TCHC 06 L</b>          | <b>TCHC 06 SL</b>       |
| with thermoplastic lever and gasket                    |                     |            |                           | <b>THCC 06 LG *</b>     |

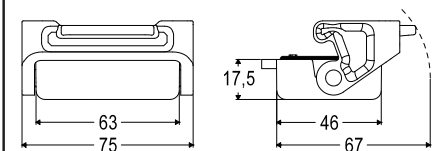
**TAVC LG**



**TCHC L (SL)**

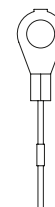


**THCC LG**



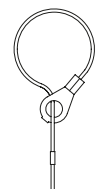
For fixing  
on housings

eyelet



For fixing  
on hoods

loop



cURus  
Type 12 pending



ambient temperature limits -50 °C / +70 °C

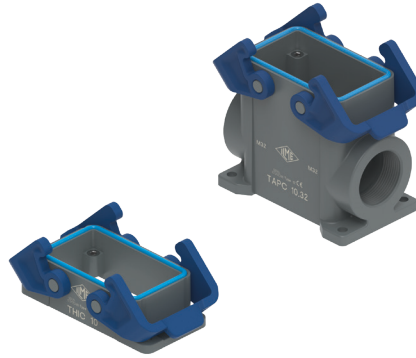
# T-TYPE / C for low-temperature HYGIENIC SERIES

| inserts          |                     | page:     |
|------------------|---------------------|-----------|
| CDD              | 42 poles + ⊕        | 78        |
| CDS              | 18 poles + ⊕        | -         |
| CDSH             | 18 poles + ⊕        | 87        |
| CNE              | 10 poles + ⊕        | 111       |
| CSE              | 10 poles + ⊕        | -         |
| CSH              | 10 poles + ⊕        | 111       |
| CSH S            | 10 poles + ⊕        | 123       |
| CCE              | 10 poles + ⊕        | 131       |
| CMSH             | 3+2 (aux) poles + ⊕ | 136       |
| CMCE             | 3+2 (aux) poles + ⊕ | 137       |
| CSS              | 10 poles + ⊕        | 149       |
| CT, CTSE (16 A)* | 10 poles + ⊕        | 161       |
| CQE              | 18 poles + ⊕        | 169       |
| CX               | 8/24 poles + ⊕      | 194       |
| MIXO             | 3 modules           | 262 - 317 |

\* only for standard insulating version THIH

refer to CN.19 pages

## housings with 2 levers SILICONE gasket



FROM JULY 2022

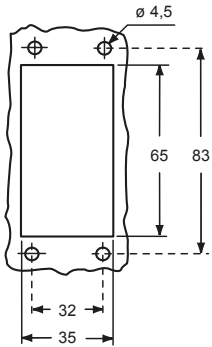
## hoods with 4 pegs



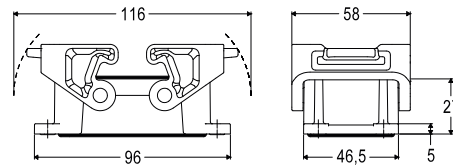
FROM JULY 2022

| description                                                       | part No.          | entry<br>M | part No.          | entry<br>M |
|-------------------------------------------------------------------|-------------------|------------|-------------------|------------|
| bulkhead mounting housing with thermoplastic levers               | <b>THIC 10</b>    |            |                   |            |
| surface mounting housing, thermoplastic levers, high construction | <b>TAPC 10.25</b> | 25         |                   |            |
| surface mounting housing, thermoplastic levers, high construction | <b>TAPC 10.32</b> | 32         |                   |            |
| with pegs, side entry, high construction                          |                   |            | <b>TMAO 10.25</b> | 25         |
| with pegs, side entry, high construction                          |                   |            | <b>TMAO 10.32</b> | 32         |
| with pegs, top entry, high construction                           |                   |            | <b>TMAV 10.25</b> | 25         |
| with pegs, top entry, high construction                           |                   |            | <b>TMAV 10.32</b> | 32         |

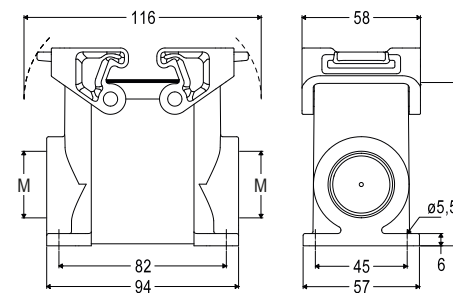
### panel cut-out for bulkhead mounting housings



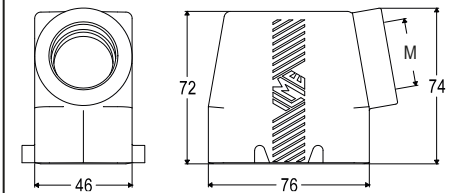
### THIC



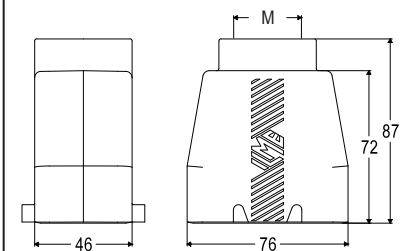
### TAPC



### TMAO



### TMAV



The surface mounting, high construction housings are supplied with an open threaded entry and diametrically opposite a closed threaded entry which can be opened by the user if required (with suitable tool).

cURus  
Type 12 pending



ambient temperature limits -50 °C / +70 °C

# T-TYPE / C for low-temperature **HYGIENIC SERIES**

|                  |                     |              |
|------------------|---------------------|--------------|
| <b>inserts</b>   |                     | <b>page:</b> |
| CDD              | 42 poles + ⊕        | 78           |
| CDS              | 18 poles + ⊕        | -            |
| CDSH             | 18 poles + ⊕        | 87           |
| CNE              | 10 poles + ⊕        | 111          |
| CSE              | 10 poles + ⊕        | -            |
| CSH              | 10 poles + ⊕        | 111          |
| CSH S            | 10 poles + ⊕        | 123          |
| CCE              | 10 poles + ⊕        | 131          |
| CMSH             | 3+2 (aux) poles + ⊕ | 136          |
| CMCE             | 3+2 (aux) poles + ⊕ | 137          |
| CSS              | 10 poles + ⊕        | 149          |
| CT, CTSE (16 A)* | 10 poles + ⊕        | 161          |
| CQE              | 18 poles + ⊕        | 169          |
| CX               | 8/24 poles + ⊕      | 194          |
| MIXO             | 3 modules           | 262 - 317    |

\* only for standard insulating version TCHC

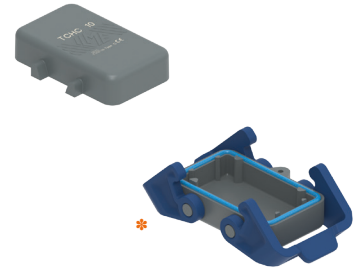
refer to CN.19 pages

## hoods with 2 levers, top entry SILICONE gasket



**FROM JULY 2022**

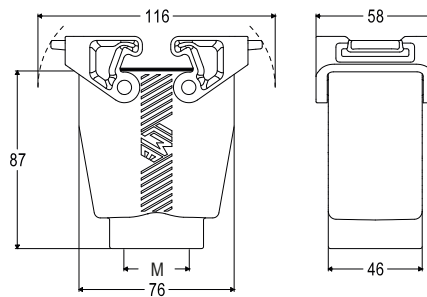
## covers SILICONE gasket



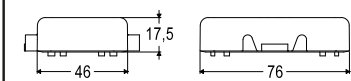
**FROM JULY 2022\***

| description                                                         | part No.           | entry<br>M | part No.<br>(with eyelet) | part No.<br>(with loop) |
|---------------------------------------------------------------------|--------------------|------------|---------------------------|-------------------------|
| with thermoplastic levers and gasket, high construction             | <b>TAVC 10 G25</b> | 25         | <b>TCHC 10</b>            | <b>TCHC 10 S</b>        |
| with thermoplastic levers and gasket, high construction with 4 pegs | <b>TAVC 10 G32</b> | 32         |                           | <b>THCC 10 G *</b>      |
| with 2 thermoplastic levers and gasket                              |                    |            |                           |                         |

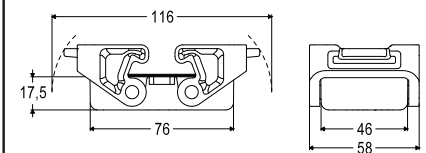
**TAVC G**



**TCHC (S)**



**THCC G**



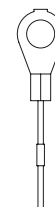
cURus  
Type 12 pending



ambient temperature limits -50 °C / +70 °C

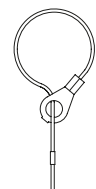
For fixing  
on housings

eyelet



For fixing  
on hoods

loop



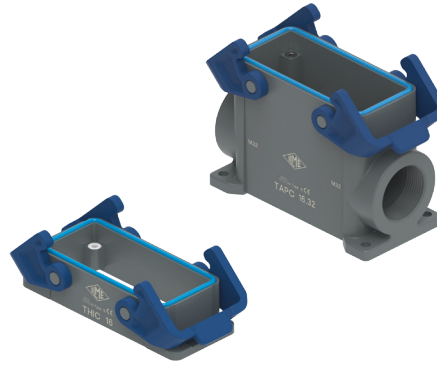
# T-TYPE / C for low-temperature HYGIENIC SERIES

|                  |                               |              |
|------------------|-------------------------------|--------------|
| <b>inserts</b>   |                               | <b>page:</b> |
| CD               | 40 poles + ⊕                  | 70           |
| CDD              | 72 poles + ⊕                  | 79           |
| CDS              | 27 poles + ⊕                  | -            |
| CDSH             | 27 poles + ⊕                  | 88           |
| CNE              | 16 poles + ⊕                  | 112          |
| CSE              | 16 poles + ⊕                  | -            |
| CSH              | 16 poles + ⊕                  | 112          |
| CSH S            | 16 poles + ⊕                  | 124          |
| CCE              | 16 poles + ⊕                  | 132          |
| CM SH, CMCE      | 6+2 (aux) poles + ⊕           | 138 - 139    |
| CSS              | 16 poles + ⊕                  | 150          |
| CT, CTSE (16 A)* | 16 poles + ⊕                  | 162          |
| CQE              | 32 poles + ⊕                  | 170          |
| CQEE             | 40 poles + ⊕                  | 176          |
| CP               | 6 poles + ⊕                   | 178          |
| CX               | 6/12, 6/36 and 12/2 poles + ⊕ | 197 - 199    |
| CX               | 4/0 and 4/2 poles + ⊕         | 200 - 201    |

\* only for standard insulating version THIH

refer to CN.19 pages

## housings with 2 levers SILICONE gasket



FROM JULY 2022

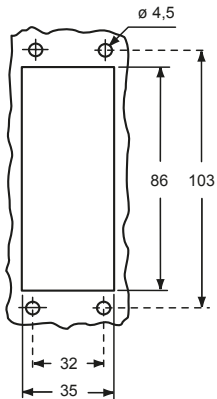
## hoods with 4 pegs



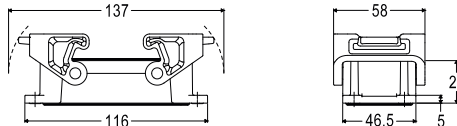
FROM JULY 2022

| description                                                       | part No.          | entry<br>M | part No.          | entry<br>M |
|-------------------------------------------------------------------|-------------------|------------|-------------------|------------|
| bulkhead mounting housing with thermoplastic levers               | <b>THIC 16</b>    |            |                   |            |
| surface mounting housing, thermoplastic levers, high construction | <b>TAPC 16.32</b> | 32         |                   |            |
| surface mounting housing, thermoplastic levers, high construction | <b>TAPC 16.40</b> | 40         |                   |            |
| with pegs, side entry, high construction                          |                   |            | <b>TMAO 16.32</b> | 32         |
| with pegs, side entry, high construction                          |                   |            | <b>TMAO 16.40</b> | 40         |
| with pegs, top entry, high construction                           |                   |            | <b>TMAV 16.32</b> | 32         |
| with pegs, top entry, high construction                           |                   |            | <b>TMAV 16.40</b> | 40         |

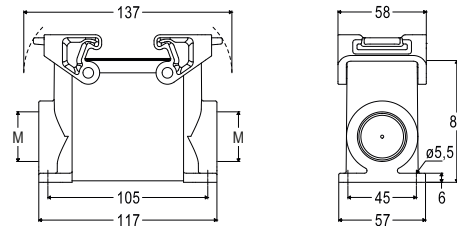
### panel cut-out for bulkhead mounting housings



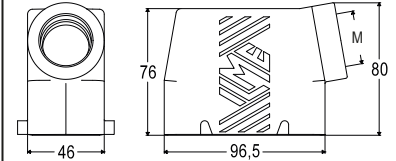
### THIC



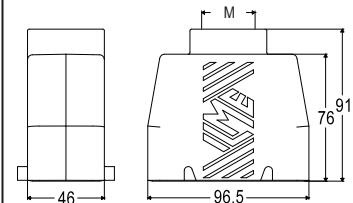
### TAPC



### TMAO



### TMAV



The surface mounting, high construction housings are supplied with an open threaded entry and diametrically opposite a closed threaded entry which can be opened by the user if required (with suitable tool).

cURus  
Type 12 pending



ambient temperature limits -50 °C / +70 °C

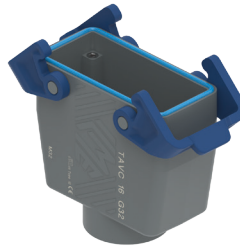
# T-TYPE / C for low-temperature **HYGIENIC SERIES**

| inserts          |                               | page:     |
|------------------|-------------------------------|-----------|
| CD               | 40 poles + ⊕                  | 70        |
| CDD              | 72 poles + ⊕                  | 79        |
| CDS              | 27 poles + ⊕                  | -         |
| CDSH             | 27 poles + ⊕                  | 88        |
| CNE              | 16 poles + ⊕                  | 112       |
| CSE              | 16 poles + ⊕                  | -         |
| CSH              | 16 poles + ⊕                  | 112       |
| CSH S            | 16 poles + ⊕                  | 124       |
| CCE              | 16 poles + ⊕                  | 132       |
| CMSH, CMCE       | 6+2 (aux) poles + ⊕           | 138 - 139 |
| CSS              | 16 poles + ⊕                  | 150       |
| CT, CTSE (16 A)* | 16 poles + ⊕                  | 162       |
| CQE              | 32 poles + ⊕                  | 170       |
| CQEE             | 40 poles + ⊕                  | 176       |
| CP               | 6 poles + ⊕                   | 178       |
| CX               | 6/12, 6/36 and 12/2 poles + ⊕ | 197 - 199 |
| CX               | 4/0 and 4/2 poles + ⊕         | 200 - 201 |

\* only for standard insulating version THCH

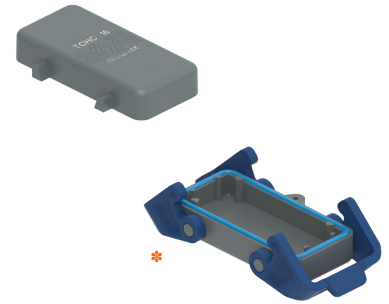
refer to CN.19 pages

## hoods with 2 levers, top entry SILICONE gasket



FROM JULY 2022

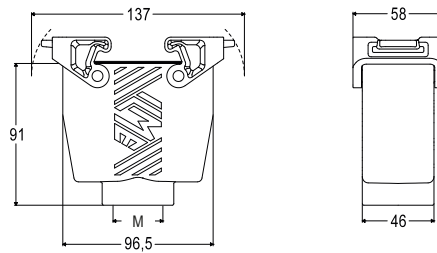
## covers SILICONE gasket



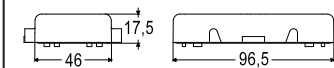
FROM JULY 2022\*

| description                                             | part No.           | entry<br>M | part No.<br>(with eyelet) | part No.<br>(with loop) |
|---------------------------------------------------------|--------------------|------------|---------------------------|-------------------------|
| with thermoplastic levers and gasket, high construction | <b>TAVC 16 G32</b> | 32         |                           |                         |
| with thermoplastic levers and gasket, high construction | <b>TAVC 16 G40</b> | 40         |                           |                         |
| with 4 pegs                                             |                    |            | <b>TCHC 16</b>            | <b>TCHC 16 S</b>        |
| with 2 thermoplastic levers and gasket                  |                    |            |                           | <b>THCC 16 G *</b>      |

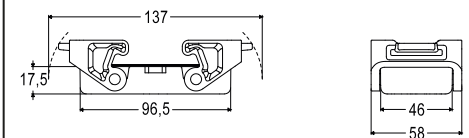
**TAVC G**



**TCHC (S)**

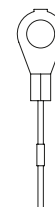


**THCC G**



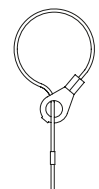
For fixing  
on housings

eyelet



For fixing  
on hoods

loop



cURus  
Type 12 pending



ambient temperature limits -50 °C / +70 °C



# T-TYPE / C for low-temperature HYGIENIC SERIES

**inserts**

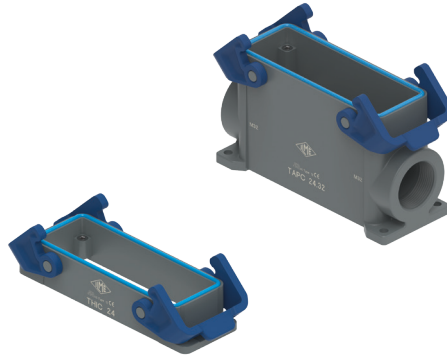
|                  |                       |           |
|------------------|-----------------------|-----------|
| CD               | 64 poles + ⊕          | 72        |
| CDD              | 108 poles + ⊕         | 81        |
| CDS              | 42 poles + ⊕          | -         |
| CDSH             | 42 poles + ⊕          | 89        |
| CNE              | 24 poles + ⊕          | 113       |
| CSE              | 24 poles + ⊕          | -         |
| CSH              | 24 poles + ⊕          | 113       |
| CSH S            | 24 poles + ⊕          | 125       |
| CCE              | 24 poles + ⊕          | 133       |
| CMSH             | 10+2 (aux) poles + ⊕  | 140       |
| CMCE             | 10+2 (aux) poles + ⊕  | 141       |
| CSS              | 24 poles + ⊕          | 151       |
| CT, CTSE (16 A)* | 24 poles + ⊕          | 163       |
| CQE              | 46 poles + ⊕          | 171       |
| CQEE             | 64 poles + ⊕          | 177       |
| CX               | 4/8 and 6/6 poles + ⊕ | 204, 206  |
| MIXO             | 6 modules             | 262 - 317 |

\* only for standard insulating version THIH

refer to CN.19 pages

page:

**housings with 2 levers  
 SILICONE gasket**



FROM JULY 2022

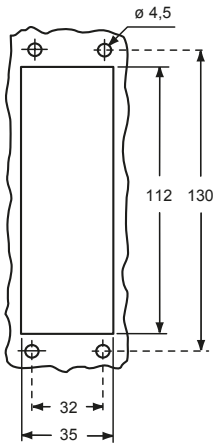
**hoods with 4 pegs**



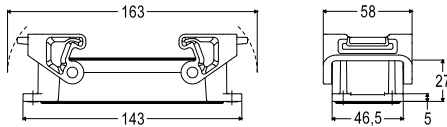
FROM JULY 2022

| description                                                       | part No.          | entry<br>M | part No.          | entry<br>M |
|-------------------------------------------------------------------|-------------------|------------|-------------------|------------|
| bulkhead mounting housing with thermoplastic levers               | <b>THIC 24</b>    |            |                   |            |
| surface mounting housing, thermoplastic levers, high construction | <b>TAPC 24.32</b> | 32         |                   |            |
| surface mounting housing, thermoplastic levers, high construction | <b>TAPC 24.40</b> | 40         |                   |            |
| with pegs, side entry, high construction                          |                   |            | <b>TMAO 24.32</b> | 32         |
| with pegs, side entry, high construction                          |                   |            | <b>TMAO 24.40</b> | 40         |
| with pegs, top entry, high construction                           |                   |            | <b>TMAV 24.32</b> | 32         |
| with pegs, top entry, high construction                           |                   |            | <b>TMAV 24.40</b> | 40         |

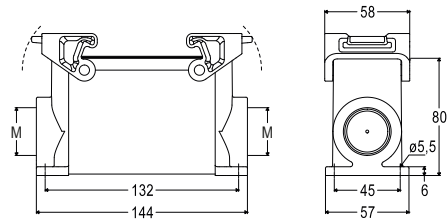
panel cut-out for bulkhead mounting housings



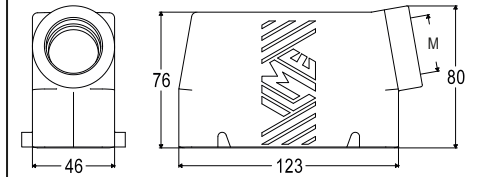
**THIC**



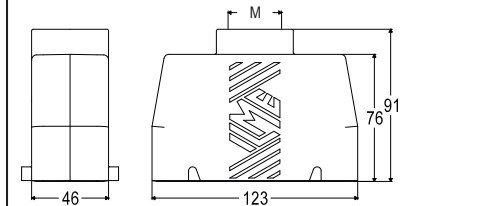
**TAPC**



**TMAO**



**TMAV**



The surface mounting, high construction housings are supplied with an open threaded entry and diametrically opposite a closed threaded entry which can be opened by the user if required (with suitable tool).

cURus  
Type 12 pending



ambient temperature limits -50 °C / +70 °C

# T-TYPE / C for low-temperature **HYGIENIC SERIES**

|                  |                       |              |
|------------------|-----------------------|--------------|
| <b>inserts</b>   |                       | <b>page:</b> |
| CD               | 64 poles + ⊕          | 72           |
| CDD              | 108 poles + ⊕         | 81           |
| CDS              | 42 poles + ⊕          | -            |
| CDSH             | 42 poles + ⊕          | 89           |
| CNE              | 24 poles + ⊕          | 113          |
| CSE              | 24 poles + ⊕          | -            |
| CSH              | 24 poles + ⊕          | 113          |
| CSH S            | 24 poles + ⊕          | 125          |
| CCE              | 24 poles + ⊕          | 133          |
| CMSH             | 10+2 (aux) poles + ⊕  | 140          |
| CMCE             | 10+2 (aux) poles + ⊕  | 141          |
| CSS              | 24 poles + ⊕          | 151          |
| CT, CTSE (16 A)* | 24 poles + ⊕          | 163          |
| CQE              | 46 poles + ⊕          | 171          |
| CQEE             | 64 poles + ⊕          | 177          |
| CX               | 4/8 and 6/6 poles + ⊕ | 204, 206     |
| MIXO             | 6 modules             | 262 - 317    |

\* only for standard insulating version TCHC

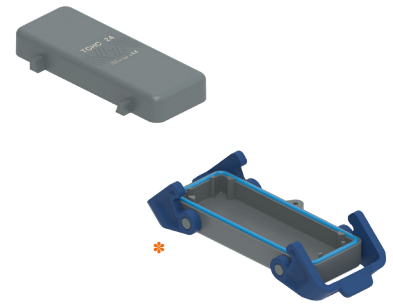
refer to CN.19 pages

## hoods with 2 levers, top entry SILICONE gasket



**FROM JULY 2022**

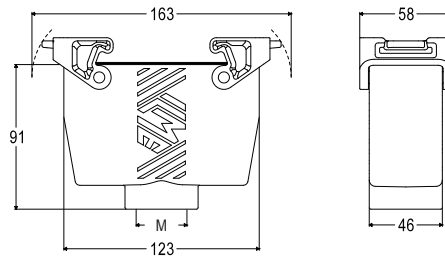
## covers SILICONE gasket



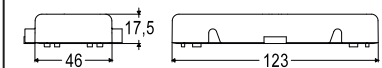
**FROM JULY 2022\***

| description                                             | part No.           | entry<br>M | part No.<br>(with eyelet) | part No.<br>(with loop) |
|---------------------------------------------------------|--------------------|------------|---------------------------|-------------------------|
| with thermoplastic levers and gasket, high construction | <b>TAVC 24 G32</b> | 32         |                           |                         |
| with thermoplastic levers and gasket, high construction | <b>TAVC 24 G40</b> | 40         |                           |                         |
| with 4 pegs                                             |                    |            | <b>TCHC 24</b>            | <b>TCHC 24 S</b>        |
| with 2 thermoplastic levers and gasket                  |                    |            |                           | <b>THCC 24 G *</b>      |

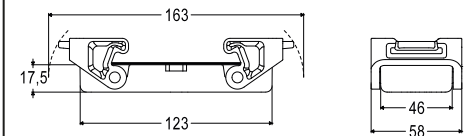
**TAVC G**



**TCHC (S)**



**THCC G**



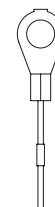
cURus  
Type 12 pending



ambient temperature limits -50 °C / +70 °C

For fixing  
on housings

eyelet



For fixing  
on hoods

loop

