

Gigabit 8-polig 5 A – 50 V

Die Modulareinsätze sind in die dafür vorgesehenen Halterahmen zu montieren, die dann in Aluminiumdruckguss-, Kunststoffgehäuse* oder Komponenten des COB-Systems eingebaut werden können. Modulareinsätze einfacher Breite können direkt in MIXO ONE Gehäuse montiert werden.

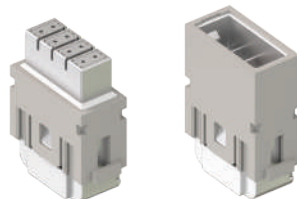
Halterahmen für Modulareinsätze* Seite: 316 – 317

MIXO ONE Gehäuse 369

* hohe Bauform, Anbaugehäuse oder IP68-Ausführung

- Bitte verwenden Sie die Codierelemente CRF/CRM CX für die entsprechenden MIXO-Halterahmen

Modulareinsätze mit Crimpanschluss



Kabelklemmen



Beschreibung

Artikelbezeichnung

Artikelbezeichnung

Die Crimpkontakte sind separat zu bestellen
 Buchseneinsätze
 Stifteinsätze

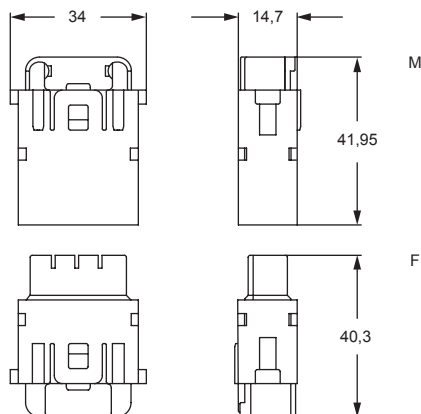
CX 08 I6F
CX 08 I6M

Kabelklemme für Kabeldurchmesser von 5 – 7 mm
 Kabelklemme für Kabeldurchmesser von 7 – 10 mm
 Kabelklemme für Kabeldurchmesser von 10 – 12 mm

CX 5/7 CA
CX 7/10 CA
CX 10/12 CA

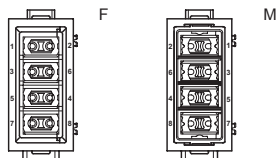
- Eigenschaften gemäß EN 61984:
5 A 50 V 0,8 kV 3
- UL, CSA, CQC, DNV-GL, BV in Vorbereitung
- Bemessungsspannung gemäß UL/CSA: 50 V
- Isolationswiderstand: $\geq 10 \text{ G}\Omega$
- Grenzwerte Umgebungstemperatur: $-40 \text{ }^\circ\text{C}$ bis $+85 \text{ }^\circ\text{C}$
- geeignet für Bussignale, insbesondere für Ethernet Cat. 6A (Gigabit)
- Die Abschirmung ist elektrisch vom PE-Anschluss der Gehäuse getrennt
- Die Kontakteinsätze werden aus selbstverlöschendem Thermoplastharz UL 94V-0 hergestellt
- Mechanische Lebensdauer: ≥ 500 Zyklen
- Kontaktwiderstand: $\leq 4 \text{ m}\Omega$
- Für Crimpkontakte der Serie CI verwenden:
Crimpzange CIPZ D
Positionshülse CITP D

CX 08 I6F, CX 08 I6M



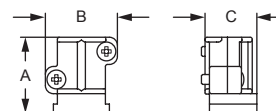
Ansicht der Steckseite

Seite mit Referenzpfeil ▲



- 1 Modulplatz

CX 5/7 CA, CX 7/10 CA, CX 10/12 CA



Artikelbezeichnung	A	B	C
CX 5/7 CA	19,1	18	12,95
CX 7/10 CA	19,1	18	12,95
CX 10/12 CA	19,1	20,8	12,95

MIXO DATEN



Sehen Sie sich unser Online-Tutorial an

Crimpkontakte CI (5 A) vergoldet



Beschreibung

Artikelbezeichnung

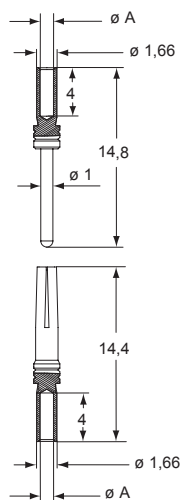
Crimpkontaktbuchsen CI (5 A)
0,08 – 0,21 mm² AWG 28 – 24
0,13 – 0,33 mm² AWG 26 – 22
0,33 – 0,52 mm² AWG 22 – 20

CIFD 0.2
CIFD 0.3
CIFD 0.5

vergoldet

Crimpkontaktstifte CI (5 A)
0,08 – 0,21 mm² AWG 28 – 24
0,13 – 0,33 mm² AWG 26 – 22
0,33 – 0,52 mm² AWG 22 – 20

CIMD 0.2
CIMD 0.3
CIMD 0.5



Kontakte CIF und CIM

Leiter- querschnitt (mm ²)	Leiter- durchmesser ø A (mm)	Leiter- abisolierlänge (mm)
0,08-0,21	0,64	4
0,13-0,33	0,90	4
0,33-0,52	1,12	4

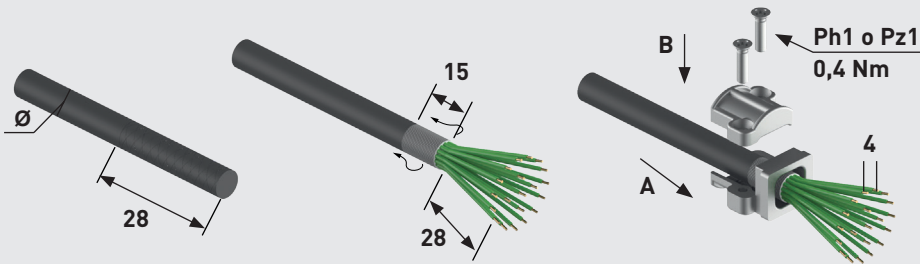
CX 20S IF/IM 20 poles + shield 4 A module - 32 V

ASSEMBLY INSTRUCTIONS

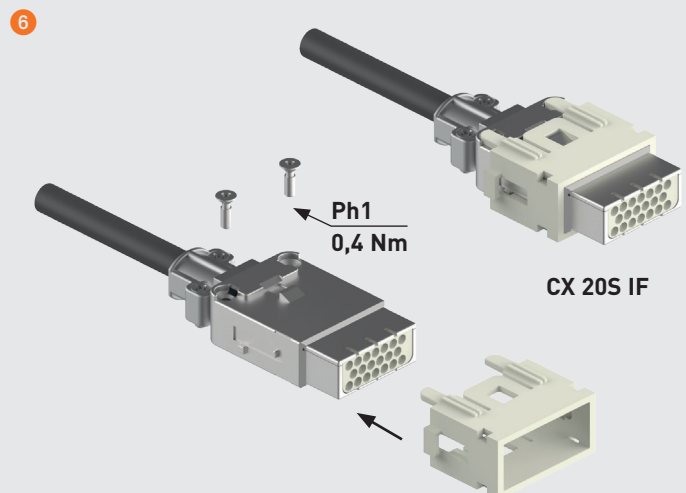
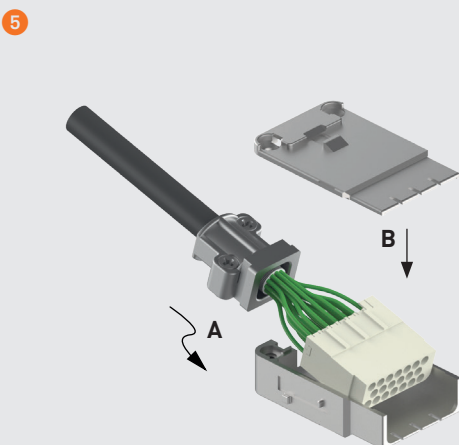
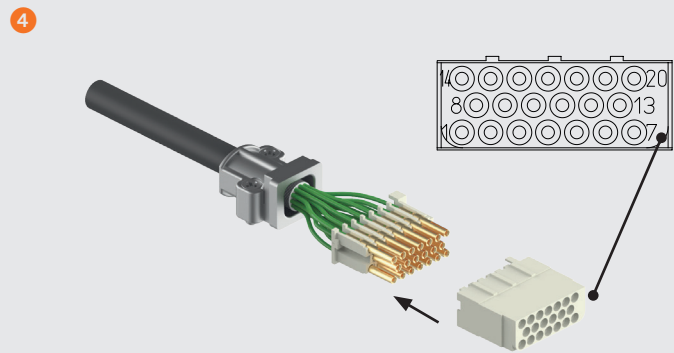
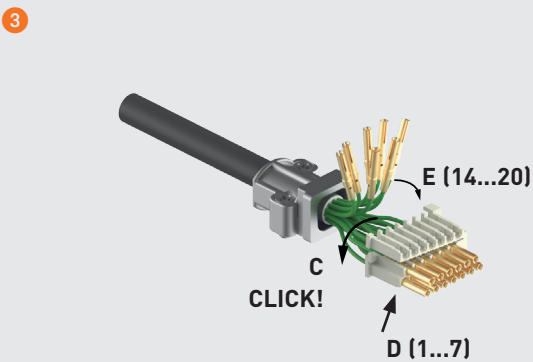
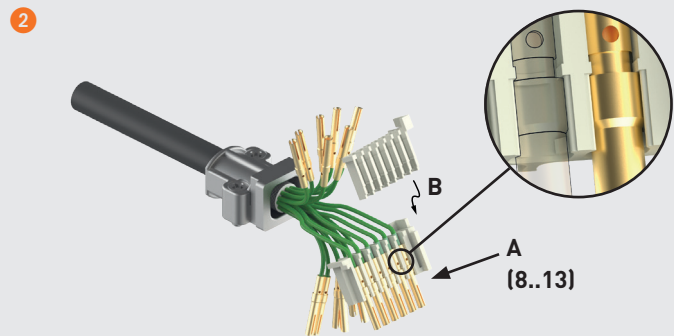
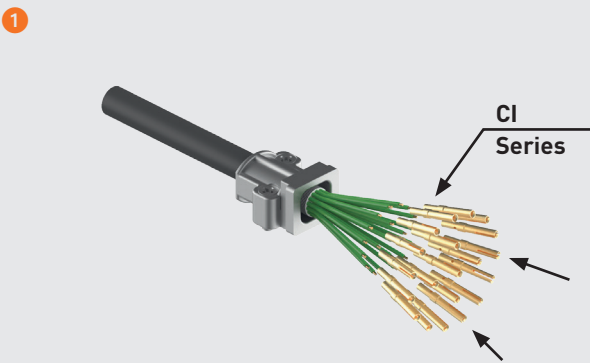
MIXO SHIELDED CX 20S IF



Watch our online tutorial



Cable clamp part No.	mm	Screw size	Tightening torque (Nm)	Recommended size of screwdriver
CX 5/7 CA	5-7	M 2,5	0,4	Ph1
CX 7/10 CA	7-10	M 2,5	0,4	Ph1
CX 10/12 CA	10-12	M 2,5	0,4	Ph1
CX 11/14 CA	11-14	M 2,5	0,4	Pz1

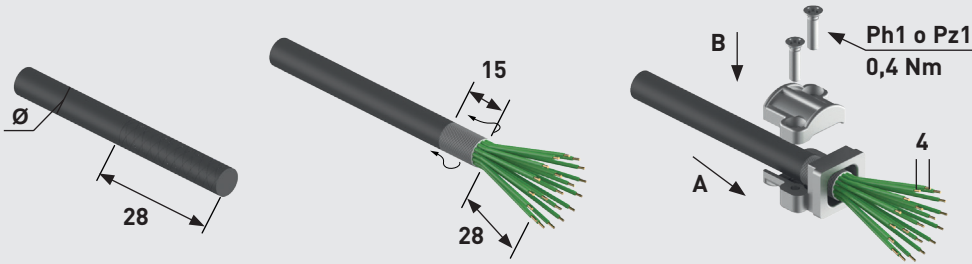


ASSEMBLY INSTRUCTIONS

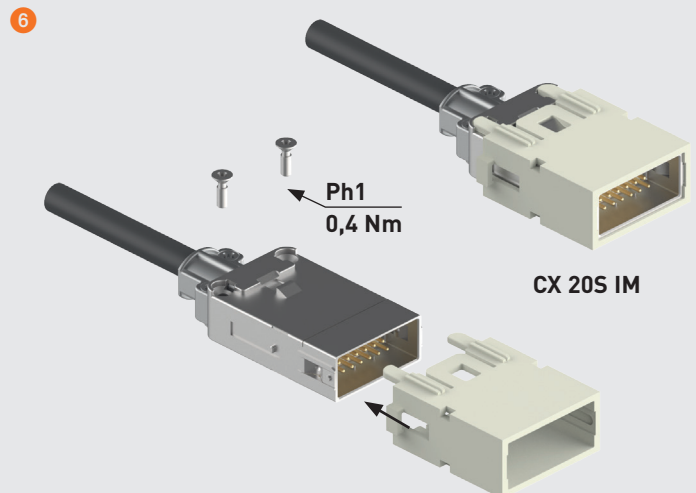
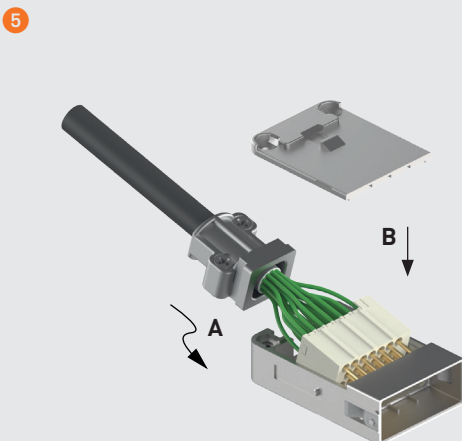
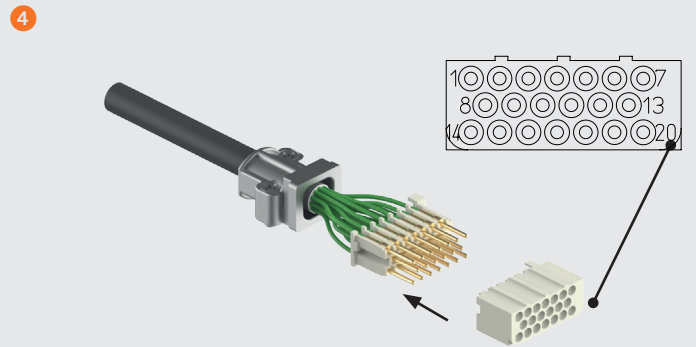
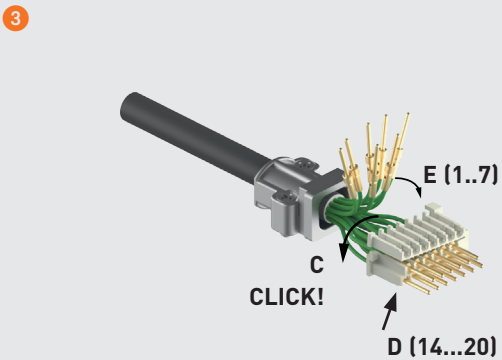
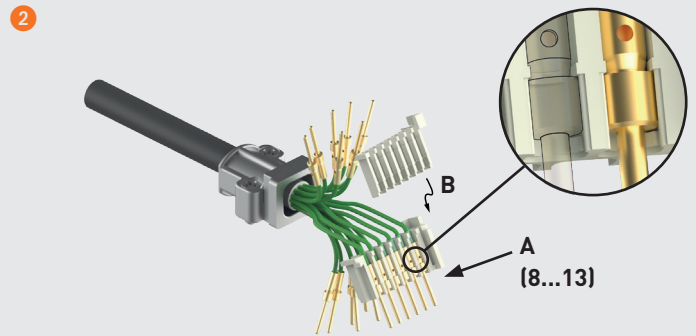
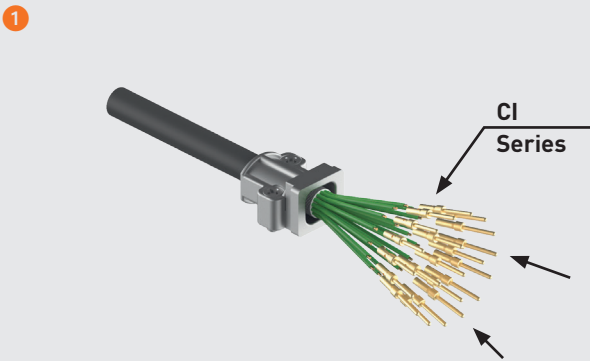
MIXO SHIELDED CX 20S IM



Watch our online tutorial



Cable clamp part No.	∅ mm	Screw size	Tightening torque (Nm)	Recommended size of screwdriver
CX 5/7 CA	5-7	M 2,5	0,4	Ph1
CX 7/10 CA	7-10	M 2,5	0,4	Ph1
CX 10/12 CA	10-12	M 2,5	0,4	Ph1
CX 11/14 CA	11-14	M 2,5	0,4	Pz1



Megabit 8 poles + shield 10 A - 50 V

The modular inserts must be installed in suitable frames which are then mounted in traditional housings or in COB panel support. Single-sized modular units may be directly mounted inside MIXO ONE enclosures.

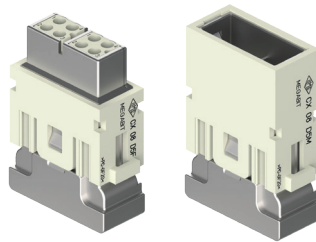
frames for modular units page: 48 *

MIXO ONE enclosures 369

- we recommend the use of CRF / CRM code pins together with relevant MIXO frame

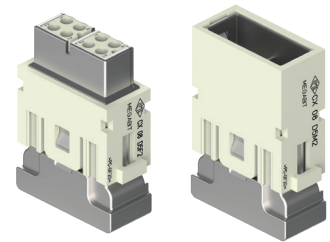
refer to CN.19 pages
* refer to NEWS 2020 pages

modular units,
crimp connection
single cable entry



FROM MARCH 2020

modular units,
crimp connection
double cable entry



FROM MARCH 2020

description

part No.

part No.

without contacts (to be ordered separately)
female inserts for female contacts
male inserts for male contacts

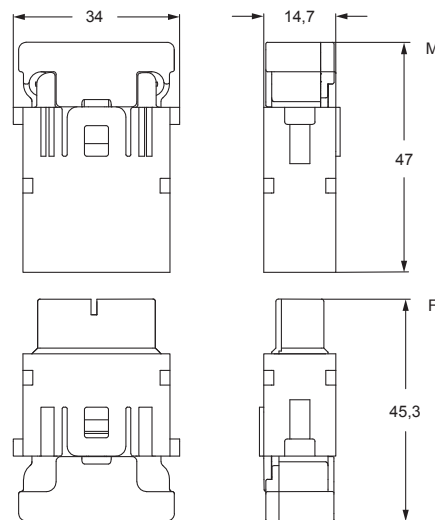
CX 08 D5F
CX 08 D5M

without contacts (to be ordered separately)
female inserts for female contacts
male inserts for male contacts

CX 08 D5F2
CX 08 D5M2

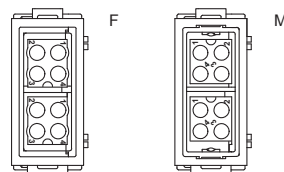
- characteristics according to EN/IEC 61984 ratings:
10 A 50 V 0,8 kV 3
- cUL (UL for USA and Canada), CSA, CQC, DNV-GL, BV pending
- rated voltage according to UL/CSA: 50 V
- insulation resistance: $\geq 10 \text{ G}\Omega$
- ambient temperature limit: $-40 \text{ }^\circ\text{C} \dots +85 \text{ }^\circ\text{C}$
- fully shielded connector module for data transmission, Megabit Ethernet Category 5e (5 in the code), Class D, frequencies up to 100 MHz, data rate up to 100 Mbit/s
- shield electrically separated from the PE circuit MIXO frame
- made of self-extinguishing thermoplastic resin UL 94V-0
- shield made by zinc-alloy
- mechanical life: ≥ 500 cycles
- contact resistance: $\leq 3 \text{ m}\Omega$
- **it is recommended to crimp the contacts with crimping tools homologated by ILME** (please see the crimping tool section 10A contacts CDF, CDM series pages 708 - 741 of CN.19 catalogue).
For 10A contacts CDF, CDM series, see also the new pneumatic crimping tool CCPZP RN (see page 145).

CX 08 D5F, CX 08 D5M



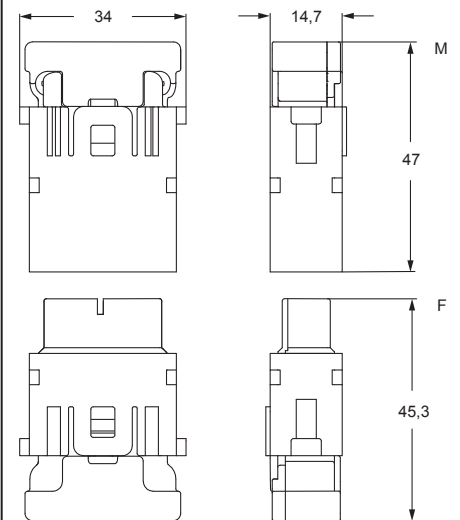
contacts side (front view)

side with reference arrow ▲



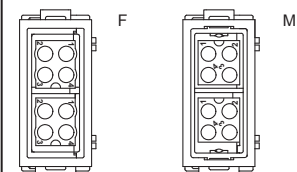
- 1 frame slot

CX 08 D5F2, CX 08 D5M2



contacts side (front view)

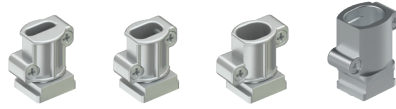
side with reference arrow ▲



- 1 frame slot

CX...CA Cable clamp - CD 10 A Crimp contacts

cable clamp



CD (10 A) crimp contacts gold plated



description

part No.

part No.

cable clamp for 5-7 mm cable diameter
 cable clamp for 7-10 mm cable diameter
 cable clamp for 10-12 mm cable diameter
 cable clamp for 11-14 mm cable diameter *

CX 5/7 CA
CX 7/10 CA
CX 10/12 CA
CX 11/14 CA

10 A female contacts

0,14-0,37 mm ²	AWG 26-22	identification No. 1
0,5 mm ²	AWG 20	identification No. 2
0,75 mm ²	AWG 18	identification No. ②
1 mm ²	AWG 18	identification No. 3
1,5 mm ²	AWG 16	identification No. 4
2,5 mm ²	AWG 14	identification No. 5

CDFD 0.3
CDFD 0.5
CDFD 0.7
CDFD 1.0
CDFD 1.5
CDFD 2.5

gold plated+

10 A male contacts

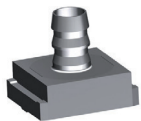
0,14-0,37 mm ²	AWG 26-22	identification No. 1
0,5 mm ²	AWG 20	identification No. 2
0,75 mm ²	AWG 18	identification No. ②
1 mm ²	AWG 18	identification No. 3
1,5 mm ²	AWG 16	identification No. 4
2,5 mm ²	AWG 14	identification No. 5

CDMD 0.3
CDMD 0.5
CDMD 0.7
CDMD 1.0
CDMD 1.5
CDMD 2.5

* only for single cable entry modules

☑ Upon request we can supply crimp flange and crimp sleeves of different diameters that must be chosen according to the specific cable shield and insulation diameter, please contact ILME Commercial Offices.

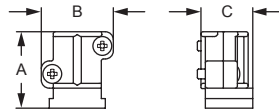
crimp flange



crimp sleeves

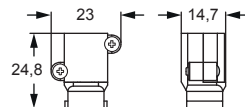


CX 5/7 CA, CX 7/10 CA, CX 10/12 CA

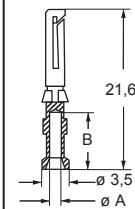
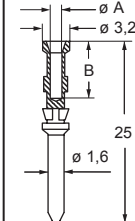


part No.	A	B	C
CX 5/7 CA	19,1	18	12,95
CX 7/10 CA	19,1	18	12,95
CX 10/12 CA	19,1	20,8	12,95

CX 11/14 CA



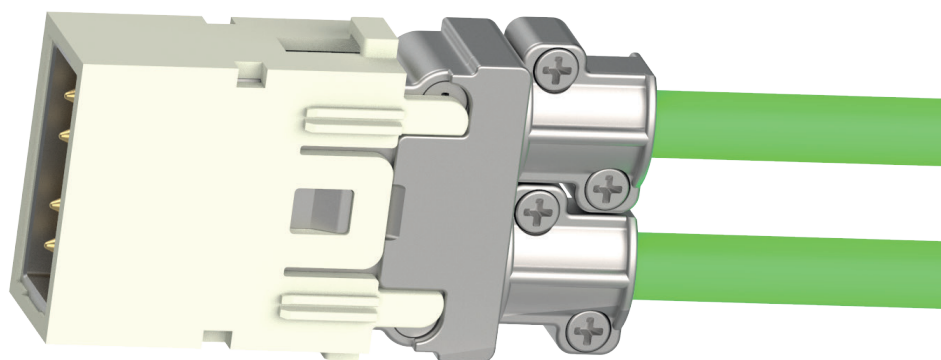
CDF and CDM



CDF and CDM contacts

conductor section mm ²	conductor slot ø A (mm)	conductors stripping length B (mm)
0,14-0,37	0,9	8
0,5	1,1	8
0,75	1,3	8
1,0	1,45	8
1,5	1,8	8
2,5	2,2	6

+ for basic or high thickness gold plating, please refer to page 674 of CN.19 catalogue

MIXO MEGABIT - CX 08 D5F2 /M2

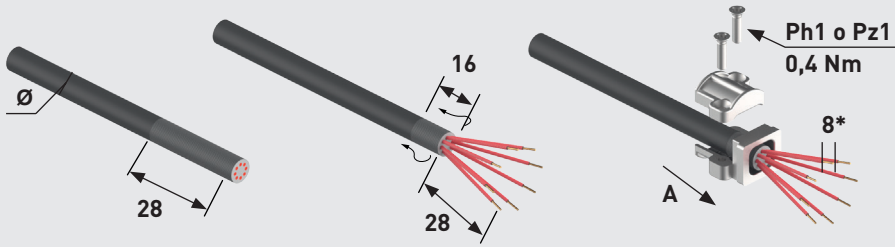
Megabit 8 poles + shield 10 A - 50 V

ASSEMBLY INSTRUCTIONS

MIXO MEGABIT CX 08 D5F



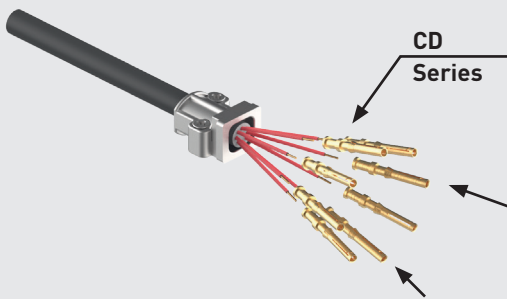
Watch our online tutorial



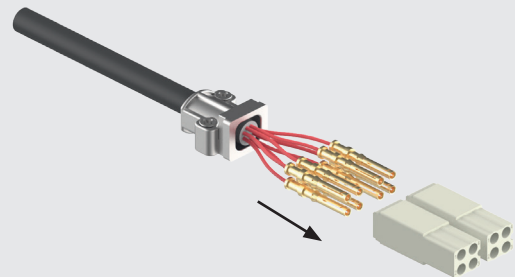
Cable clamp part No.	∅ mm	Screw size	Tightening torque (Nm)	Recommended size of screwdriver
CX 5/7 CA	5-7	M 2,5	0,4	Ph1
CX 7/10 CA	7-10	M 2,5	0,4	Ph1
CX 10/12 CA	10-12	M 2,5	0,4	Ph1
CX 11/14 CA	11-14	M 2,5	0,4	Pz1

* 6 mm for CD...2.5

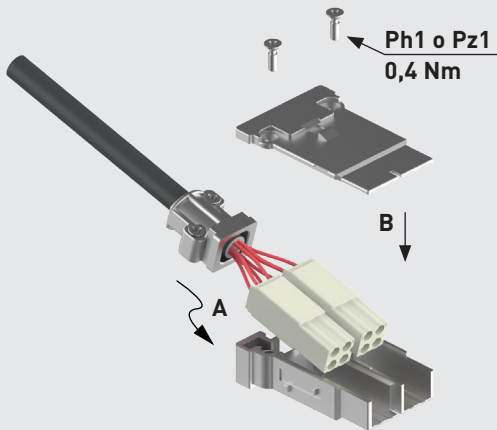
1



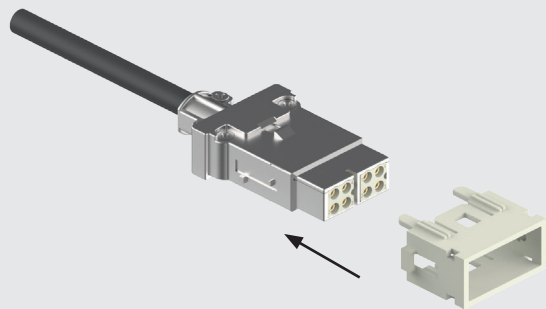
2



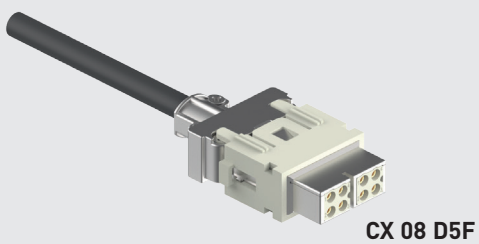
3



4



5



CX 08 D5F

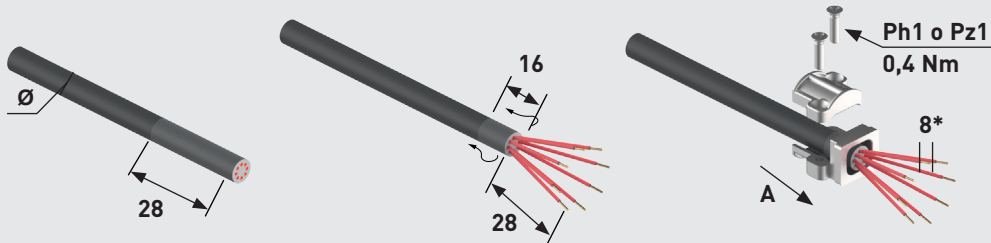
Megabit 8 poles + shield 10 A - 50 V

ASSEMBLY INSTRUCTIONS

MIXO MEGABIT CX 08 D5M

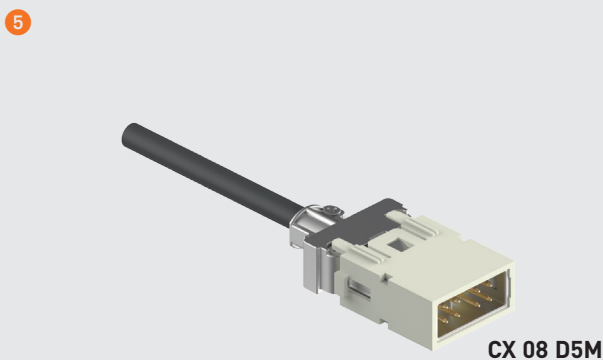
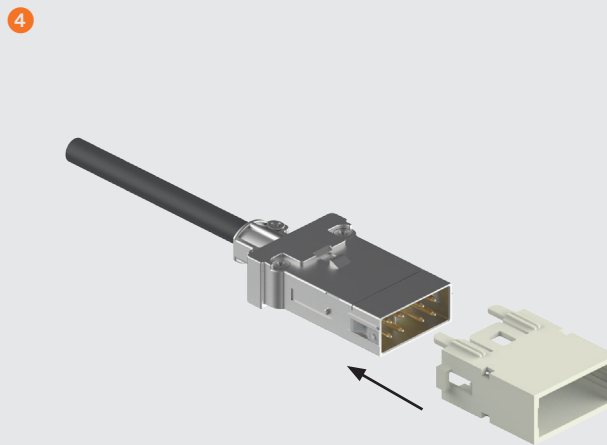
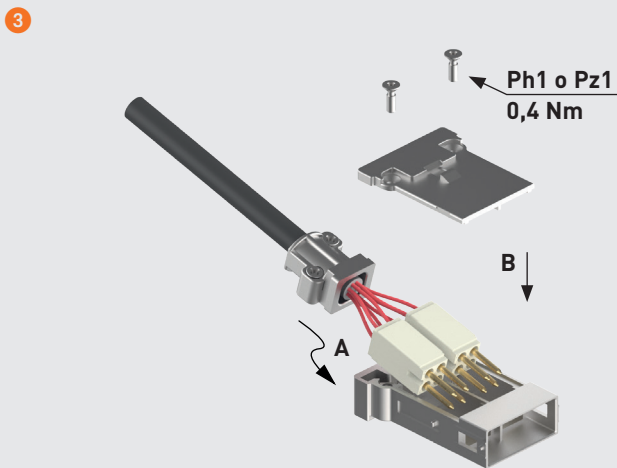
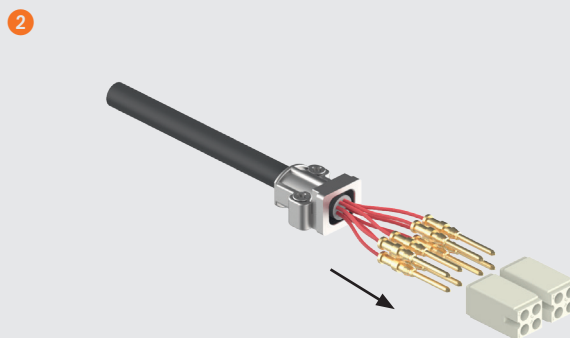
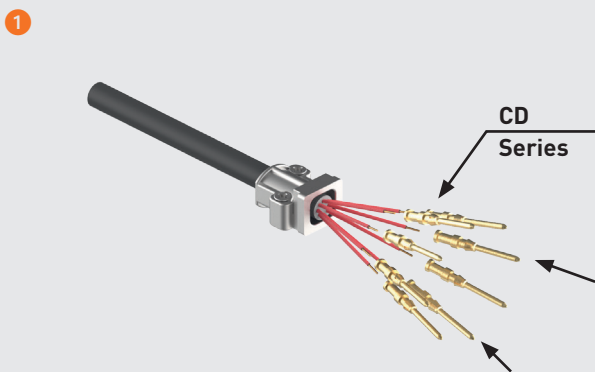


Watch our online tutorial



Cable clamp part No.	mm	Screw size	Tightening torque (Nm)	Recommended size of screwdriver
CX 5/7 CA	5-7	M 2,5	0,4	Ph1
CX 7/10 CA	7-10	M 2,5	0,4	Ph1
CX 10/12 CA	10-12	M 2,5	0,4	Ph1
CX 11/14 CA	11-14	M 2,5	0,4	Pz1

* 6 mm for CD...2.5



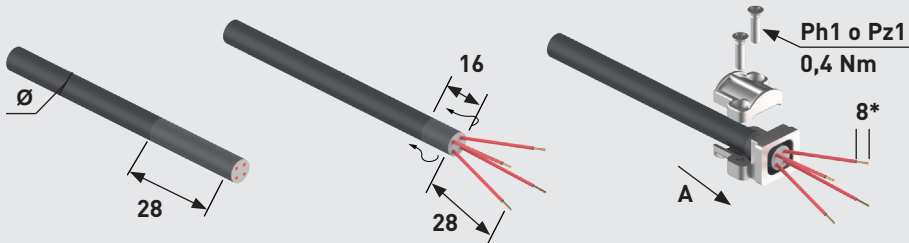
Megabit 8 poles + shield 10 A - 50 V

ASSEMBLY INSTRUCTIONS

MIXO MEGABIT CX 08 D5F2



Watch our online tutorial

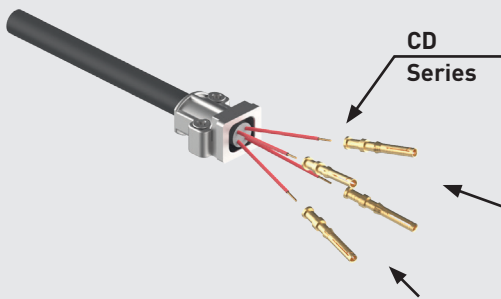


Cable clamp part No.	mm	Screw size	Tightening torque (Nm)	Recommended size of screwdriver
CX 5/7 CA	5-7	M 2,5	0,4	Ph1
CX 7/10 CA	7-10	M 2,5	0,4	Ph1
CX 10/12 CA	10-12	M 2,5	0,4	Ph1

2x

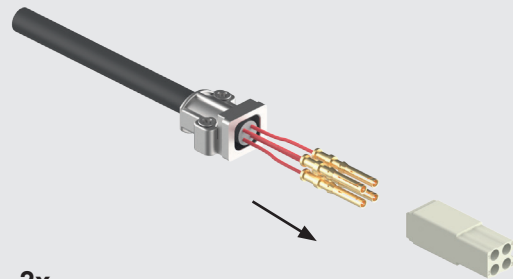
* 6 mm for CD..2.5

1



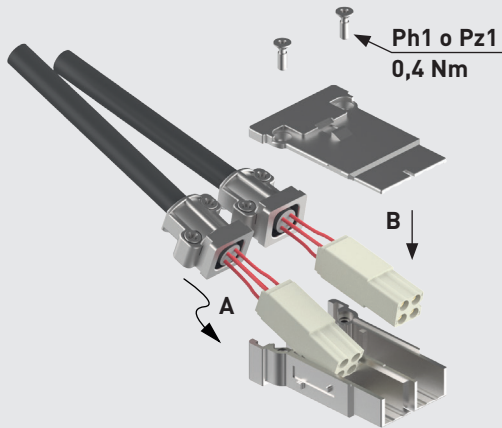
2x

2

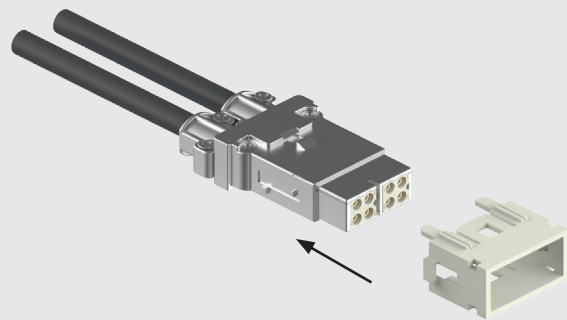


2x

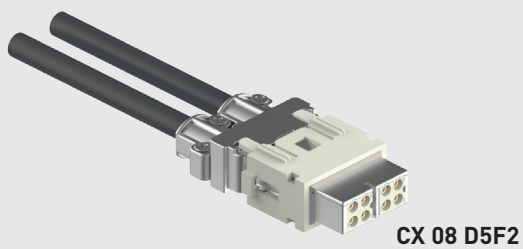
3



4



5



CX 08 D5F2

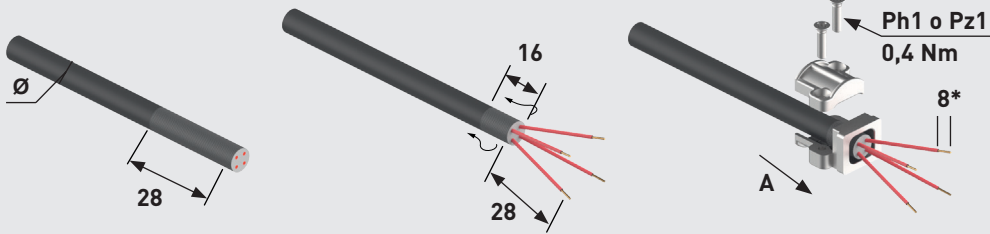
Megabit 8 poles + shield 10 A - 50 V

ASSEMBLY INSTRUCTIONS

MIXO MEGABIT CX 08 D5M2



Watch our online tutorial

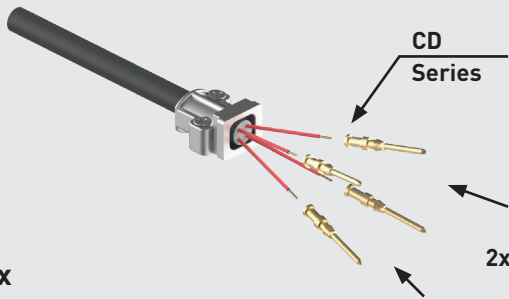


Cable clamp part No.	∅ mm	Screw size	Tightening torque (Nm)	Recommended size of screwdriver
CX 5/7 CA	5-7	M 2,5	0,4	Ph1
CX 7/10 CA	7-10	M 2,5	0,4	Ph1
CX 10/12 CA	10-12	M 2,5	0,4	Ph1

2x

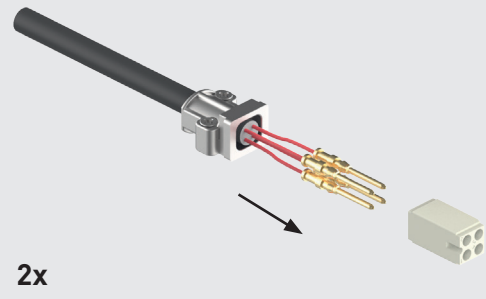
* 6 mm for CD..2.5

1



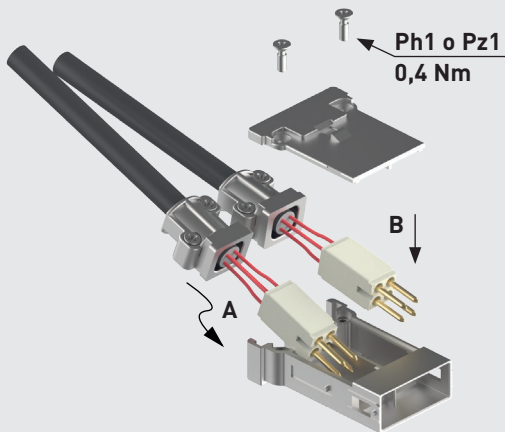
2x

2

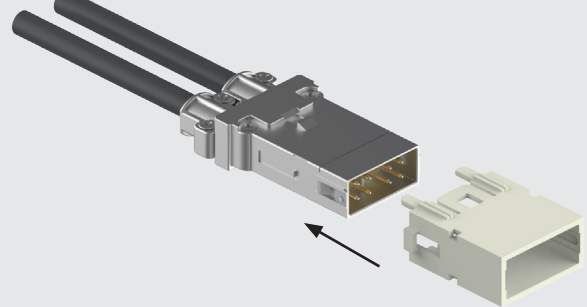


2x

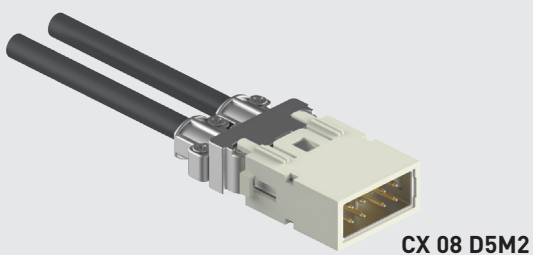
3



4



5



CX 08 D5M2

CX 01 9VF2 /9VM2 9-pole crimp D-SUB shielded connector

The modular inserts must be installed in suitable frames which are then mounted in traditional enclosures* or in COB panel support.
Single-sized modular units may be directly mounted inside MIXO ONE enclosures.

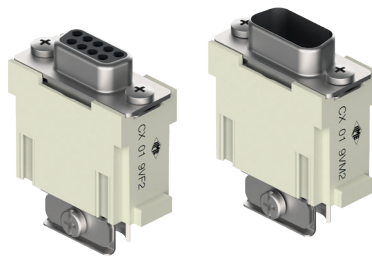
frames for modular units* pages: 316 - 317

MIXO ONE enclosures 369

* enclosures:
housings or high construction hoods

refer to CN.19 pages

module adapter with 1 D-SUB connector
double cable entry



FROM MARCH 2020

CI (5 A) crimp contacts for D-SUB
gold plated



description	part No.	part No.
-------------	----------	----------

seat for 1 D-SUB crimp contacts connector and shield (included)

female insert with connector
male insert with connector

CX 01 9VF2
CX 01 9VM2

CI (5 A) female crimp contacts
0,08-0,21 mm² AWG 28-24
0,13-0,33 mm² AWG 26-22
0,33-0,52 mm² AWG 22-20

CIFD 0.2
CIFD 0.3
CIFD 0.5

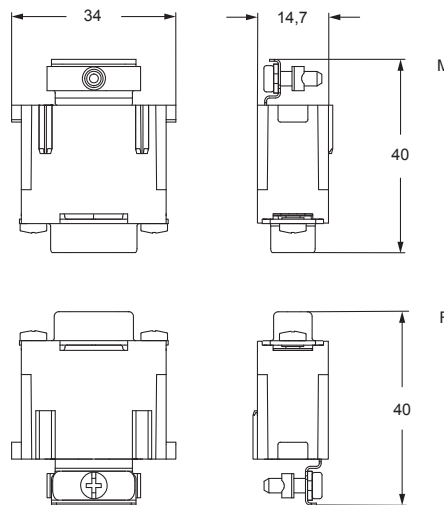
CI (5 A) male crimp contacts
0,08-0,21 mm² AWG 28-24
0,13-0,33 mm² AWG 26-22
0,33-0,52 mm² AWG 22-20

CIMD 0.2
CIMD 0.3
CIMD 0.5

gold plated+

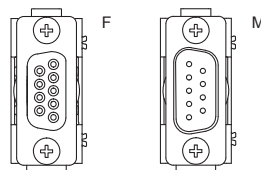
- characteristics according to EN/IEC 61984 ratings:
5 A 50 V 0,8 kV 3
- cUL (UL for USA and Canada), CSA, DNV-GL, BV pending
- Lower and Upper Limiting Temperatures (LLT ... ULT):
-40 °C ... +85 °C
- for crimp contacts CI series use:
CIPZ D crimping tool
CIPZP D pneumatic crimping tool (see page 144)
CITP D turret head
CIVES insertion / removal tool for contacts 0,2 - 0,5 mm² (see pages 716 - 719 of CN.19 catalogue)

Warnings:
We recommend the use of coding pins
CRF CX / CRM CX.

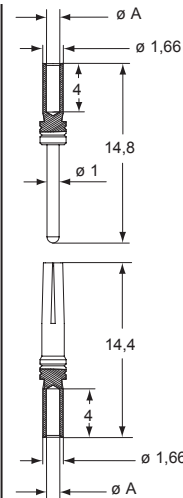


contacts side (front view)

side with reference arrow ▲



- 1 frame slot



CIF and CIM contacts

conductor section (mm ²)	conductor slot ϕA (mm)	conductors stripping length (mm)
0,08-0,21	0,64	4
0,13-0,33	0,90	4
0,33-0,52	1,12	4

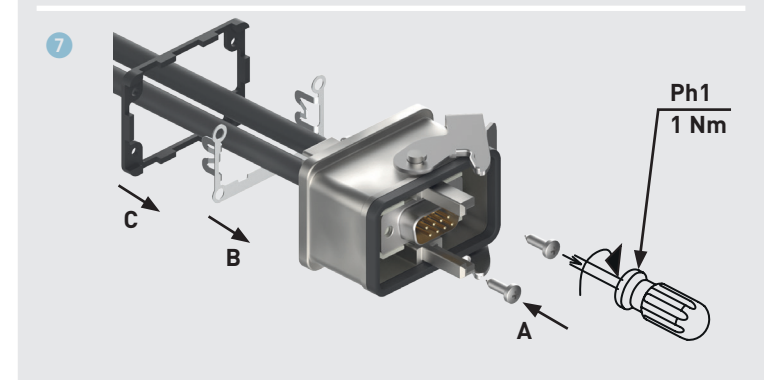
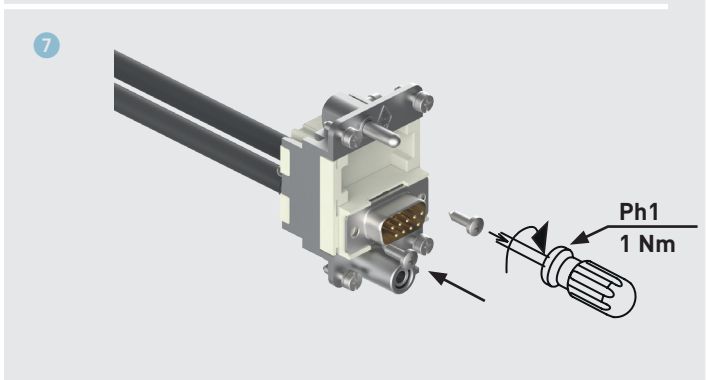
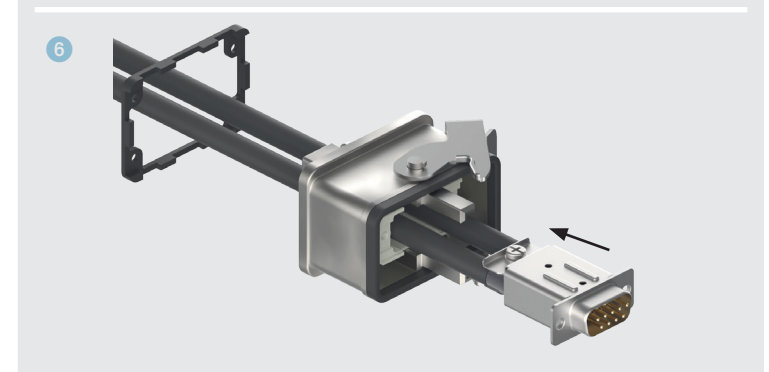
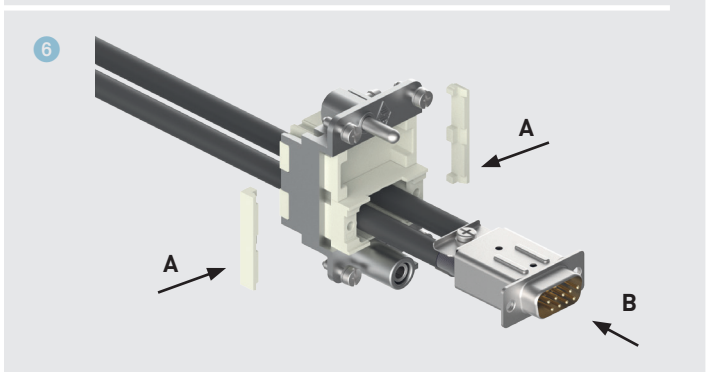
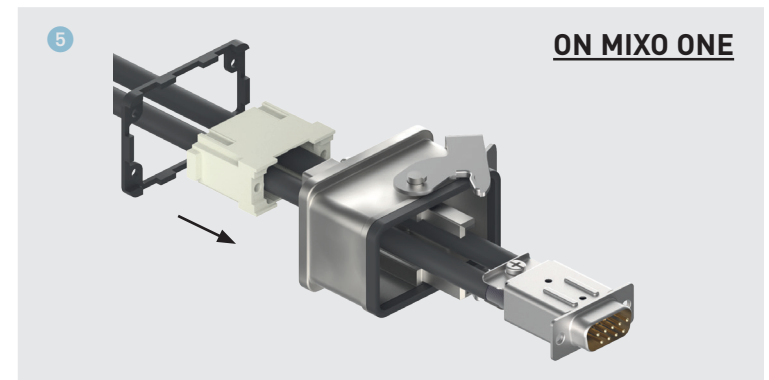
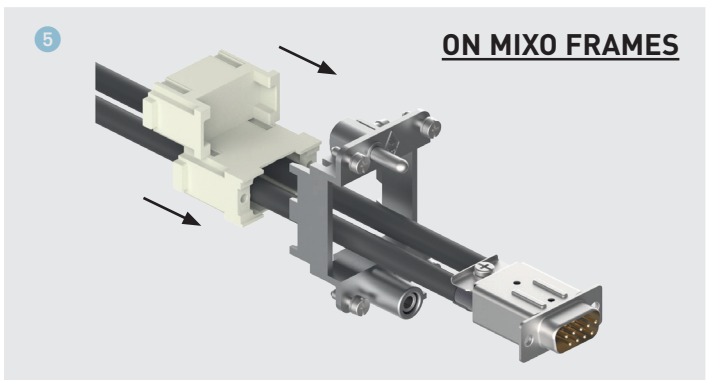
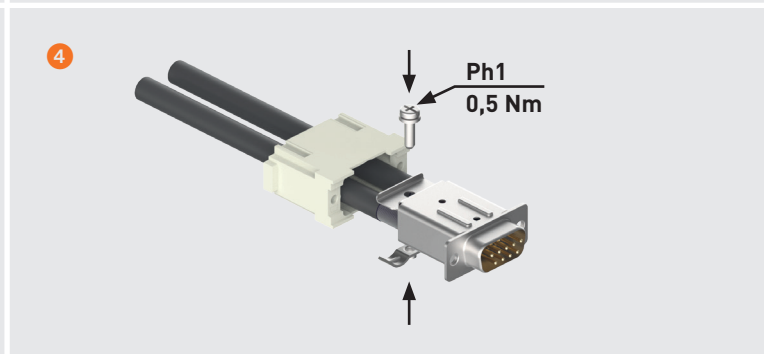
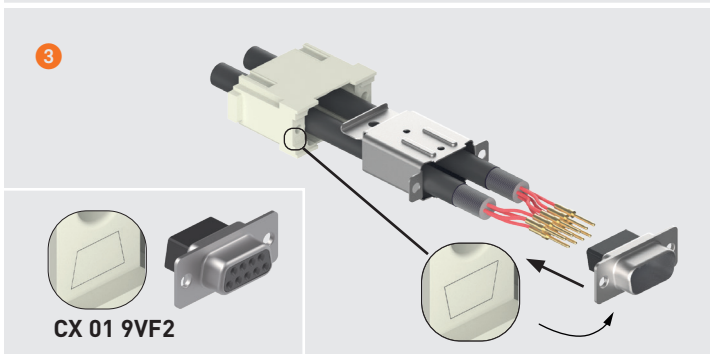
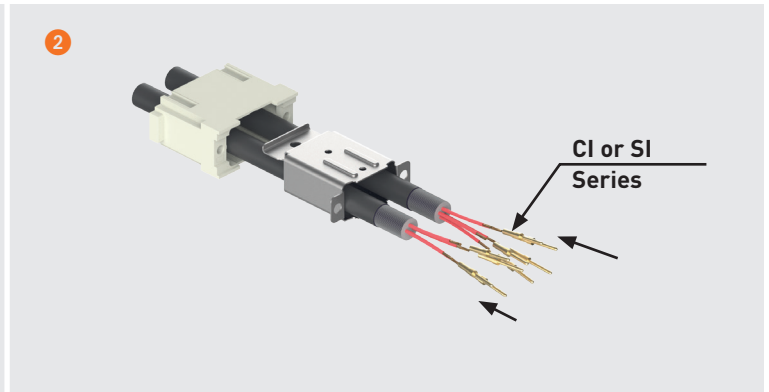
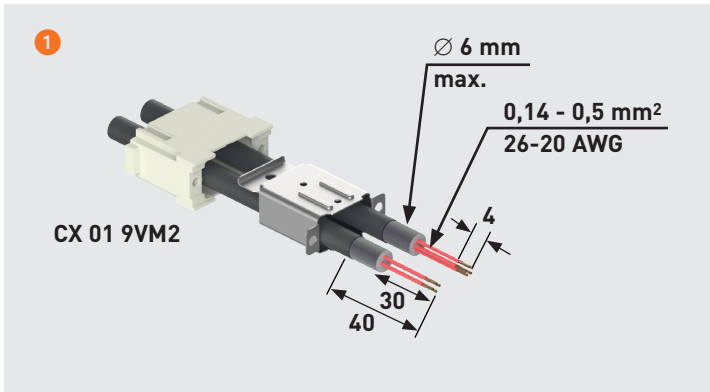
* for basic or high thickness gold plating, please refer to page 74

ASSEMBLY INSTRUCTIONS

MIXO 9-POLE SHIELDED D-SUB MODULE FOR 2 CABLES - CX 01 9VF2 /9VM2



Watch our online tutorial



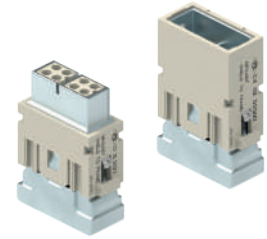
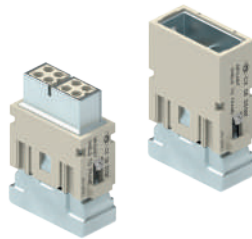
Megabit 8 poles + shield bonding connection 10 A - 50 V

The modular inserts must be installed in suitable frames which are then mounted in traditional housings or in COB panel support. Single-sized modular units may be directly mounted inside MIXO ONE enclosures.

modular units,
crimp connection
single cable entry

modular units,
crimp connection
double cable entry

	page:
frames for modular units	76
MIXO ONE enclosures	369



refer to CN.19 pages

description	part No.	part No.
-------------	----------	----------

without contacts (to be ordered separately)
female inserts for female contacts
male inserts for male contacts

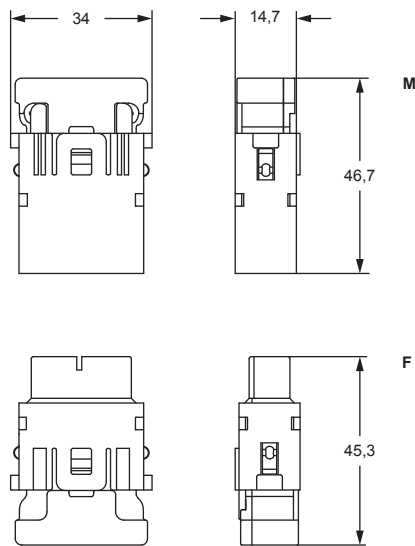
CX 08 D5GF
CX 08 D5GM

without contacts (to be ordered separately)
female inserts for female contacts
male inserts for male contacts

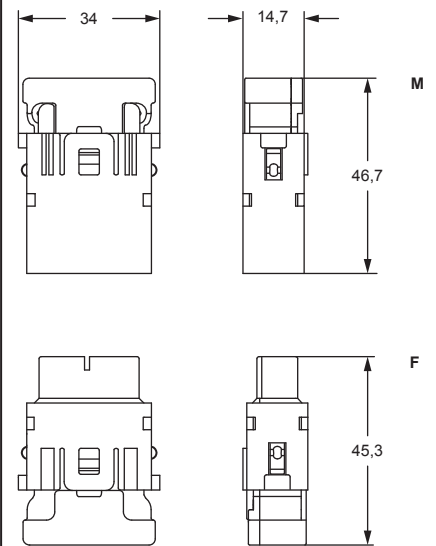
CX 08 D5GF2
CX 08 D5GM2

- characteristics according to EN/IEC 61984 ratings:
10 A 50 V 0,8 kV 3
- cUL (UL for USA and Canada), CSA, CQC, DNV-GL, BV pending
- rated voltage according to UL/CSA: 50 V
- insulation resistance: $\geq 10 \text{ G}\Omega$
- ambient temperature limit: $-40 \text{ }^\circ\text{C} \dots +85 \text{ }^\circ\text{C}$
- fully shielded connector module for data transmission, Megabit Ethernet Category 5e (5 in the code), Class D, frequencies up to 100 MHz, data rate up to 100 Mbit/s
- made of self-extinguishing thermoplastic resin UL 94V-0
- shield made by zinc-alloy
- mechanical life: ≥ 500 cycles
- contact resistance: $\leq 3 \text{ m}\Omega$
- **it is recommended to crimp the contacts with crimping tools homologated by ILME** (please see the crimping tool section 10 A contacts CDF, CDM series pages 708 - 741 of CN.19 catalogue).
For 10 A contacts CDF, CDM series, see also the new pneumatic crimping tool CCPZP RN (see NEWS 2020 page 145).

CX 08 D5GF, CX 08 D5GM



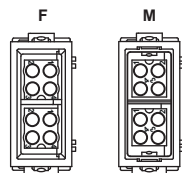
CX 08 D5GF2, CX 08 D5GM2



we recommend the use of CRF / CRM coding pins together with relevant MIXO frame

contacts side (front view)

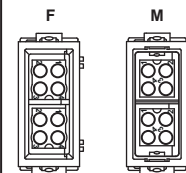
side with reference arrow ▲



- 1 frame slot

contacts side (front view)

side with reference arrow ▲



- 1 frame slot

CX...CA Cable clamp - CD 10 A Crimp contacts

cable clamp



CD (10 A) crimp contacts gold plated



description	part No.	part No.
cable clamp for 5-7 mm cable diameter	CX 5/7 CA	
cable clamp for 7-10 mm cable diameter	CX 7/10 CA	
cable clamp for 10-12 mm cable diameter ¹⁾	CX 10/12 CA	
10 A female contacts		
0,14-0,37 mm ² AWG 26-22 identification No. 1		CDFD 0.3
0,5 mm ² AWG 20 identification No. 2		CDFD 0.5
0,75 mm ² AWG 18 identification No. ②		CDFD 0.7
1 mm ² AWG 18 identification No. 3		CDFD 1.0
1,5 mm ² AWG 16 identification No. 4		CDFD 1.5
2,5 mm ² AWG 14 identification No. 5		CDFD 2.5
10 A male contacts		
0,14-0,37 mm ² AWG 26-22 identification No. 1		CDMD 0.3
0,5 mm ² AWG 20 identification No. 2		CDMD 0.5
0,75 mm ² AWG 18 identification No. ②		CDMD 0.7
1 mm ² AWG 18 identification No. 3		CDMD 1.0
1,5 mm ² AWG 16 identification No. 4		CDMD 1.5
2,5 mm ² AWG 14 identification No. 5		CDMD 2.5

gold plated[†]

¹⁾ only for single cable entry modules

☞ Upon request we can supply crimp flange and crimp sleeves of different diameters that must be chosen according to the specific cable shield and insulation diameter, please contact ILME Commercial Offices.

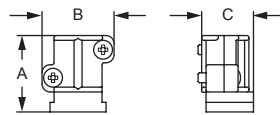
crimp flange



crimp sleeves



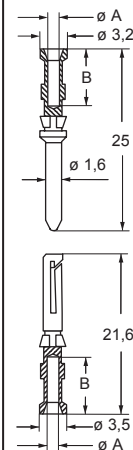
CX 5/7 CA, CX 7/10 CA, CX 10/12 CA



part No.	A	B	C
CX 5/7 CA	19,1	18	12,95
CX 7/10 CA	19,1	18	12,95
CX 10/12 CA	19,1	20,8	12,95

[†] for basic or high thickness gold plating, please refer to page 674 of CN.19 catalogue

CDF and CDM



CDF and CDM contacts

conductor section mm ²	conductor slot ø A (mm)	conductors stripping length B (mm)
0,14-0,37	0,9	8
0,5	1,1	8
0,75	1,3	8
1,0	1,45	8
1,5	1,8	8
2,5	2,2	6

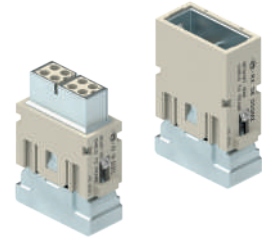
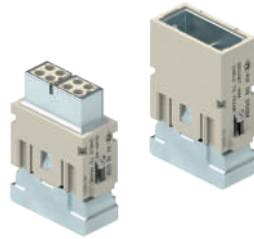
Megabit 8 poles + shield bonding connection 10 A - 50 V HNM (High Number of Matings)

The modular inserts must be installed in suitable frames which are then mounted in HNM enclosures.

modular units,
crimp connection
single cable entry

modular units,
crimp connection
double cable entry

page:
frames for modular units 77



Q 10 000 MATINGS WITH HNM FRAMES AND HNM ENCLOSURES

Q 10 000 MATINGS WITH HNM FRAMES AND HNM ENCLOSURES

description

part No.

part No.

without contacts (to be ordered separately)
female inserts for female contacts
male inserts for male contacts

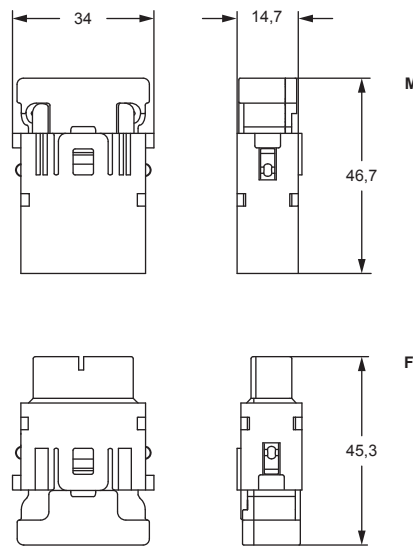
**RX 08 D5GF
RX 08 D5GM**

without contacts (to be ordered separately)
female inserts for female contacts
male inserts for male contacts

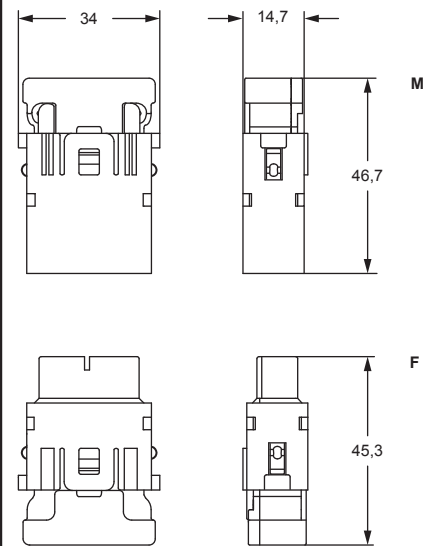
**RX 08 D5GF2
RX 08 D5GM2**

- characteristics according to EN/IEC 61984 ratings:
10 A 50 V 0,8 kV 3
- cUL (UL for USA and Canada), CSA, CQC, DNV-GL, BV pending
- rated voltage according to UL/CSA: 50 V
- insulation resistance: $\geq 10 \text{ G}\Omega$
- ambient temperature limit: $-40 \text{ }^\circ\text{C} \dots +85 \text{ }^\circ\text{C}$
- fully shielded connector module for data transmission, Megabit Ethernet Category 5e (5 in the code), Class D, frequencies up to 100 MHz, data rate up to 100 Mbit/s
- made of self-extinguishing thermoplastic resin UL 94V-0
- shield made by zinc-alloy
- mechanical life: ≥ 10.000 cycles
- contact resistance: $\leq 3 \text{ m}\Omega$
- **it is recommended to crimp the contacts with crimping tools homologated by ILME** (please see the crimping tool section 10 A contacts RDF2D, RDM2D series, pages 708 - 741 of CN.19 catalogue). For 10 A contacts RDF2D, RDM2D series, see also the new pneumatic crimping tool CCPZP RN (see NEWS 2020 page 145).

RX 08 D5GF, RX 08 D5GM



RX 08 D5GF2, RX 08 D5GM2



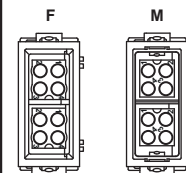
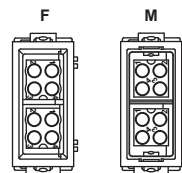
we recommend the use of CRF / CRM coding pins together with relevant MIXO frame

contacts side (front view)

contacts side (front view)

side with reference arrow ▲

side with reference arrow ▲



- 1 frame slot

- 1 frame slot

CX...CA Cable clamp - HNM RD 2D 10 A Crimp contacts

cable clamp



RD 2D (10 A) crimp contacts
gold plated



description	part No.	part No.
-------------	----------	----------

cable clamp for 5-7 mm cable diameter
 cable clamp for 7-10 mm cable diameter
 cable clamp for 10-12 mm cable diameter ¹⁾

CX 5/7 CA
CX 7/10 CA
CX 10/12 CA

10 A female contacts

cross-section	AWG	identification No.
0,14-0,37 mm ²	AWG 26-22	identification No. 1
0,5 mm ²	AWG 20	identification No. 2
0,75 mm ²	AWG 18	identification No. ②
1 mm ²	AWG 18	identification No. 3
1,5 mm ²	AWG 16	identification No. 4
2,5 mm ²	AWG 14	identification No. 5

RDF2D 0.3
RDF2D 0.5
RDF2D 0.7
RDF2D 1.0
RDF2D 1.5
RDF2D 2.5

gold plated

10 A male contacts

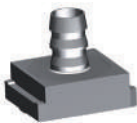
cross-section	AWG	identification No.
0,14-0,37 mm ²	AWG 26-22	identification No. 1
0,5 mm ²	AWG 20	identification No. 2
0,75 mm ²	AWG 18	identification No. ②
1 mm ²	AWG 18	identification No. 3
1,5 mm ²	AWG 16	identification No. 4
2,5 mm ²	AWG 14	identification No. 5

RDM2D 0.3
RDM2D 0.5
RDM2D 0.7
RDM2D 1.0
RDM2D 1.5
RDM2D 2.5

¹⁾ only for single cable entry modules

☞ Upon request we can supply crimp flange and crimp sleeves of different diameters that must be chosen according to the specific cable shield and insulation diameter, please contact ILME Commercial Offices.

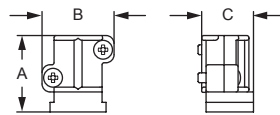
crimp flange



crimp sleeves

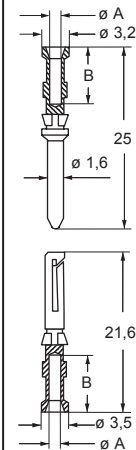


CX 5/7 CA, CX 7/10 CA, CX 10/12 CA



part No.	A	B	C
CX 5/7 CA	19,1	18	12,95
CX 7/10 CA	19,1	18	12,95
CX 10/12 CA	19,1	20,8	12,95

RDF2D and RDM2D



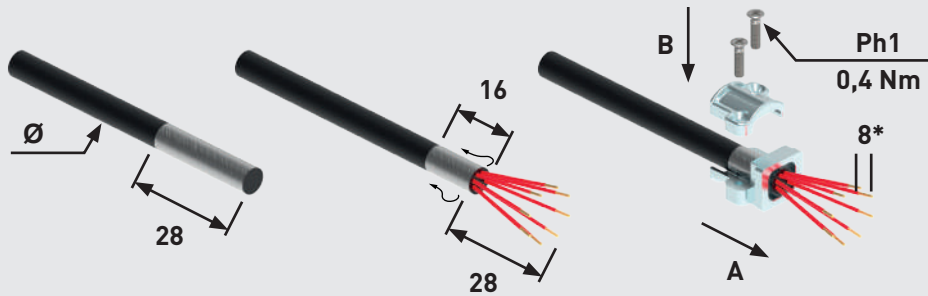
RDF2D and RDM2D contacts

conductor section mm ²	conductor slot ø A (mm)	conductors stripping length B (mm)
0,14-0,37	0,9	8
0,5	1,1	8
0,75	1,3	8
1,0	1,45	8
1,5	1,8	8
2,5	2,2	6

Megabit 8 poles + shield 10 A - 50 V

ASSEMBLY INSTRUCTIONS

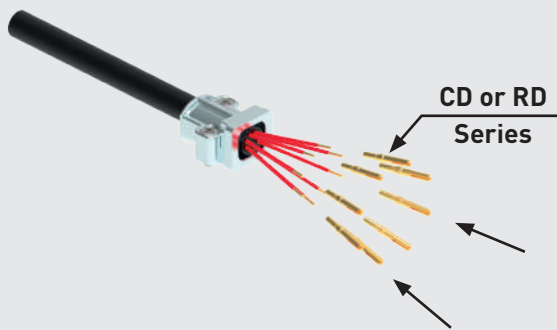
MIXO MEGABIT "SINGLE CABLE ENTRY" CX 08 D5GF OR RX 08 D5GF (HNM)



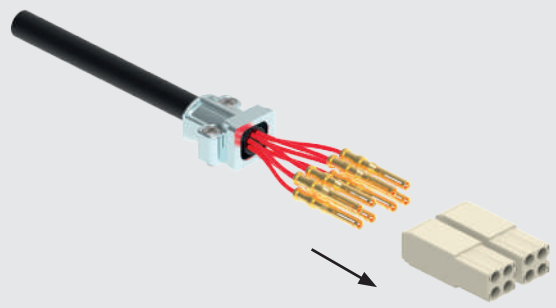
Cable clamp part No.	mm	Screw size	Tightening torque (Nm)	Recommended size of screwdriver
CX 5/7 CA	5-7	M 2,5	0,4	Ph1
CX 7/10 CA	7-10	M 2,5	0,4	Ph1
CX 10/12 CA	10-12	M 2,5	0,4	Ph1

* 6 mm for CD and RD ... 2.5

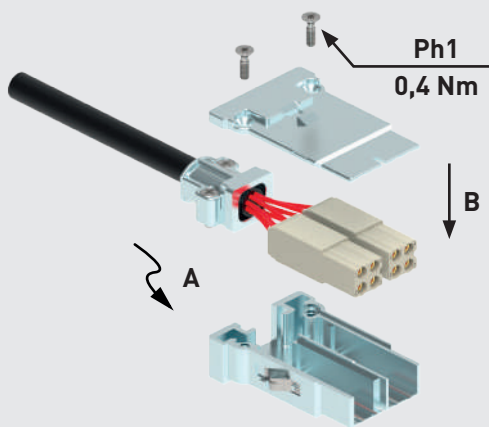
1



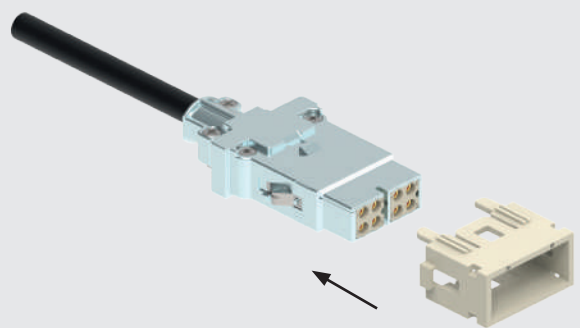
2



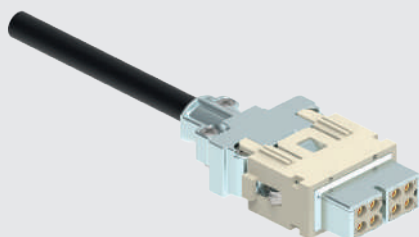
3



4



5

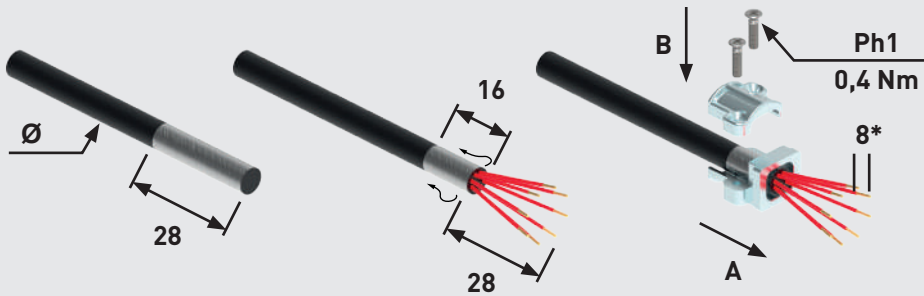


CX 08 D5GF or RX 08 D5GF (HNM)

ASSEMBLY INSTRUCTIONS

MIXO MEGABIT "SINGLE CABLE ENTRY" CX 08 D5GM OR RX 08 D5GM (HNM)

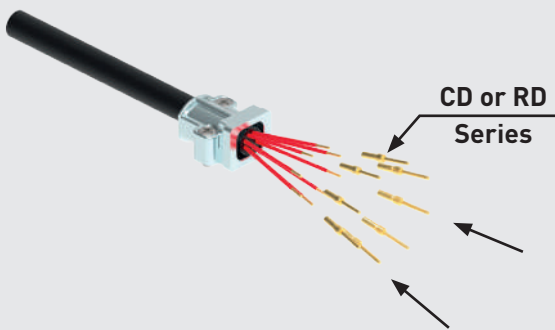
Watch our assembly tutorial



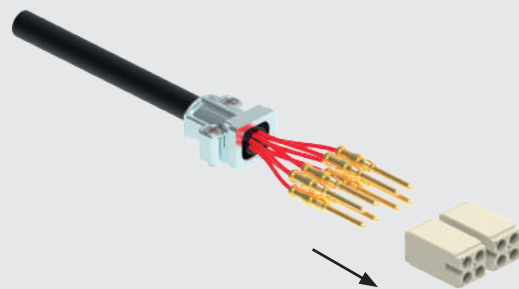
Cable clamp part No.	mm	Screw size	Tightening torque (Nm)	Recommended size of screwdriver
CX 5/7 CA	5-7	M 2,5	0,4	Ph1
CX 7/10 CA	7-10	M 2,5	0,4	Ph1
CX 10/12 CA	10-12	M 2,5	0,4	Ph1

* 6 mm for CD and RD ... 2.5

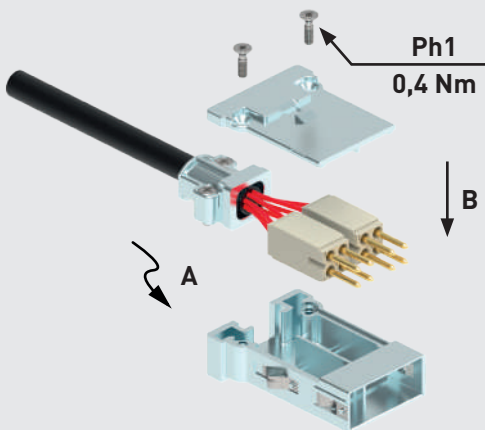
1



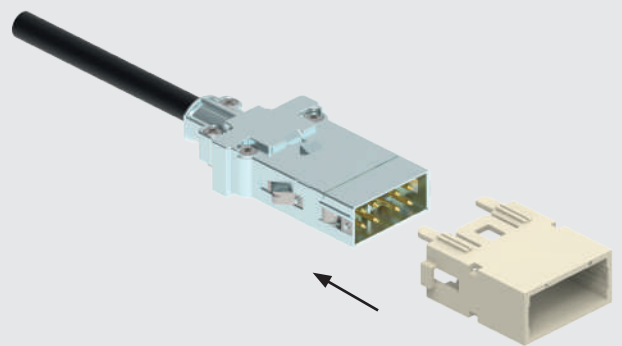
2



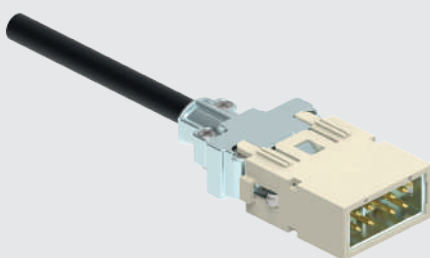
3



4



5

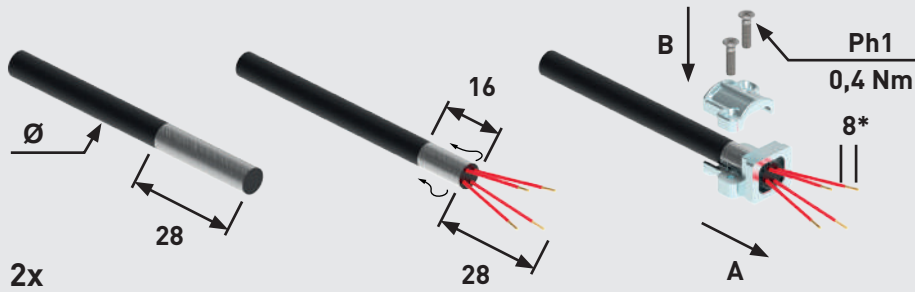


CX 08 D5GM or RX 08 D5GM (HNM)

Megabit 8 poles + shield 10 A - 50 V

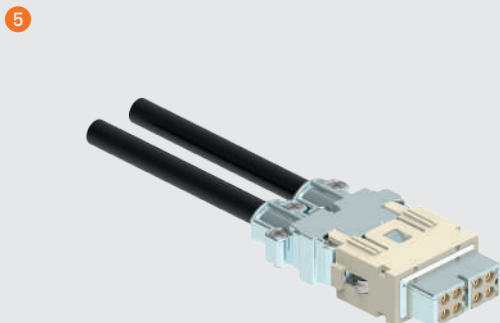
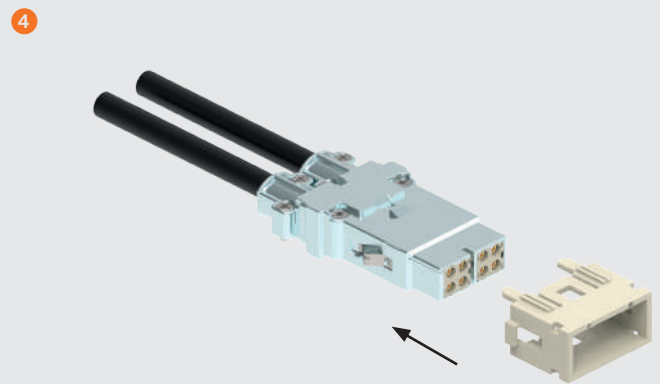
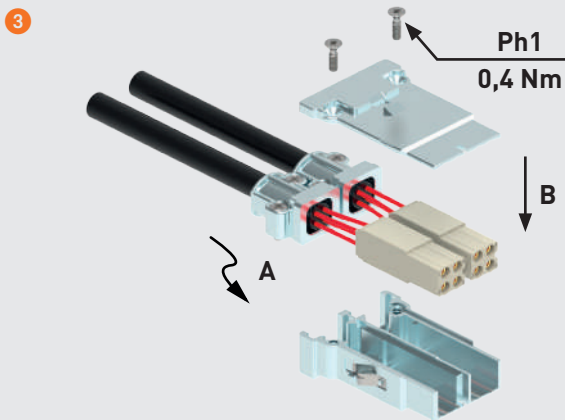
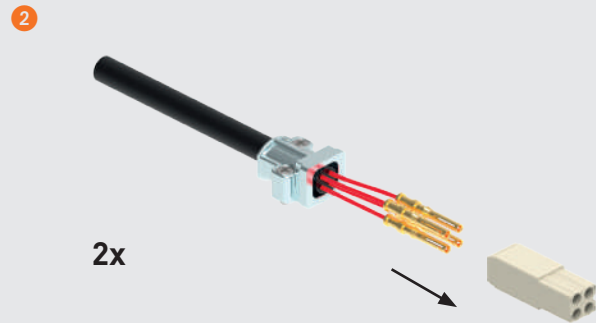
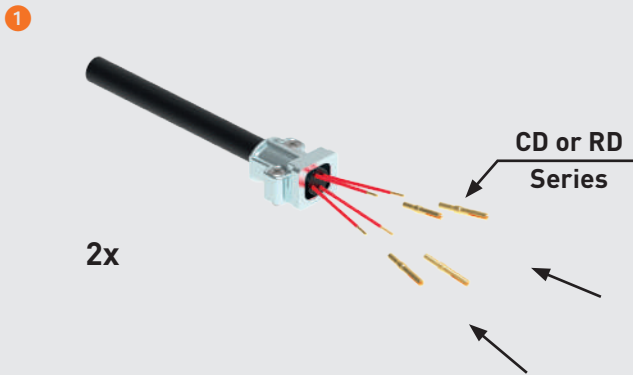
ASSEMBLY INSTRUCTIONS

MIXO MEGABIT "DOUBLE CABLE ENTRY" CX 08 D5GF2 OR RX 08 D5GF2 (HNM)



Cable clamp part No.	∅ mm	Screw size	Tightening torque (Nm)	Recommended size of screwdriver
CX 5/7 CA	5-7	M 2,5	0,4	Ph1
CX 7/10 CA	7-10	M 2,5	0,4	Ph1

* 6 mm for CD and RD... 2.5

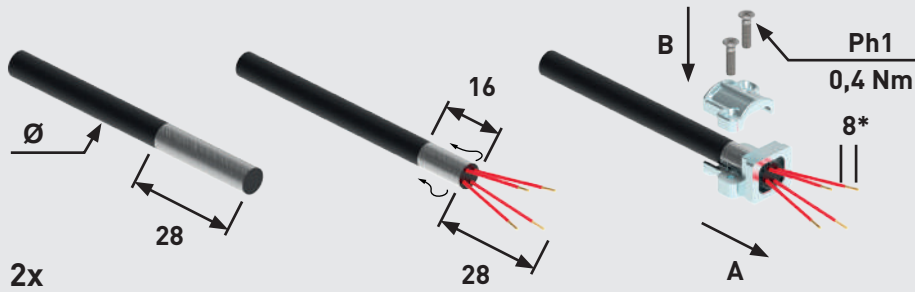


CX 08 D5GF2 or RX 08 D5GF2 (HNM)

ASSEMBLY INSTRUCTIONS

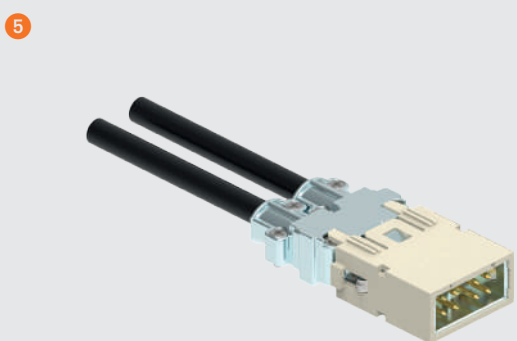
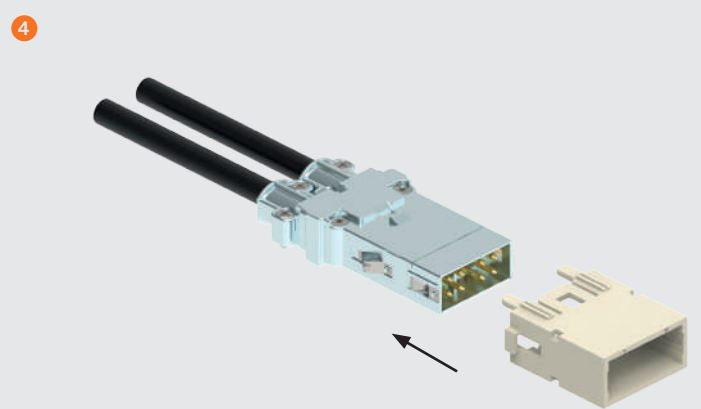
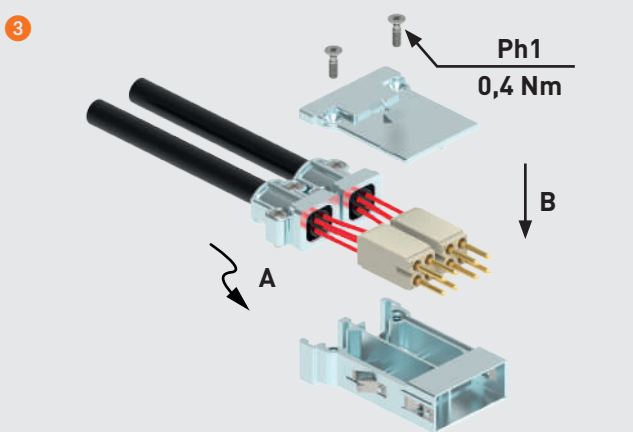
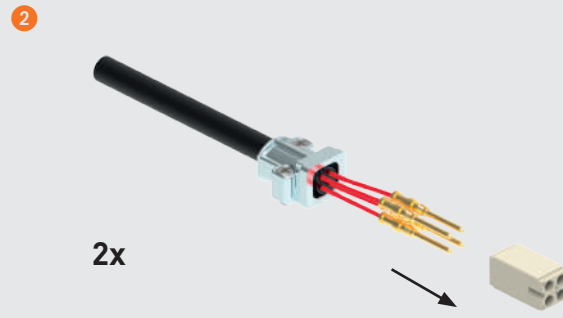
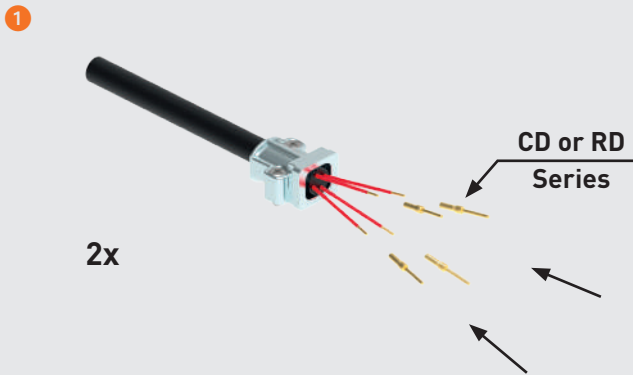
MIXO MEGABIT "DOUBLE CABLE ENTRY" CX 08 D5GM2 OR RX 08 D5GM2 (HNM)

Watch our assembly tutorial



Cable clamp part No.	∅ mm	Screw size	Tightening torque (Nm)	Recommended size of screwdriver
CX 5/7 CA	5-7	M 2,5	0,4	Ph1
CX 7/10 CA	7-10	M 2,5	0,4	Ph1

* 6 mm for CD and RD... 2.5



CX 08 D5GM2 or RX 08 D5GM2 (HNM)

Gigabit 8 poles + shield connection 5 A - 50 V

The modular inserts must be installed in suitable frames which are then mounted in traditional enclosures* or in COB panel support.

page:

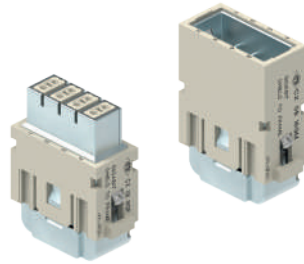
frames for modular units*

76

* enclosures: bulkhead mounting housings, high construction housings or high construction hoods

refer to CN.19 pages

modular units,
crimp connection



cable clamp



description	part No.	part No.
without contacts (to be ordered separately) female inserts for female contacts male inserts for male contacts	CX 08 I6GF CX 08 I6GM	
cable clamp for 5-7 mm cable diameter cable clamp for 7-10 mm cable diameter cable clamp for 10-12 mm cable diameter cable clamp for 11-14 mm cable diameter		CX 5/7 CA CX 7/10 CA CX 10/12 CA CX 11/14 CA

- characteristics according to EN/IEC 61984 ratings:
5 A 50 V 0,8 kV 3

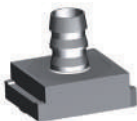
- UL, CSA, CQC, DNV-GL, BV pending
- rated voltage according to UL/CSA: 50 V
- insulation resistance: $\geq 10 \Omega$
- ambient temperature limit: $-40 \text{ }^\circ\text{C} \dots +85 \text{ }^\circ\text{C}$
- suitable for bus signals, in particular for Ethernet Cat. 6A (Gigabit)
- made of self-extinguishing thermoplastic resin UL 94V-0
- mechanical life: ≥ 500 cycles
- contact resistance: $\leq 4 \text{ m}\Omega$
- for crimp contacts CI series use:

- CIPZ D** crimping tool
- CIPZP D** pneumatic crimping tool (see NEWS 2020 page 144)
- CITP D** turret head
- CIES** insertion / removal tool for contacts 0,2 - 0,5 mm² (see pages 716 - 719 of CN.19 catalogue)

we recommend the use of CRF / CRM coding pins together with relevant MIXO frame

Upon request we can supply crimp flange and crimp sleeves of different diameters that must be chosen according to the specific cable shield and insulation diameter, please contact ILME Commercial Offices.

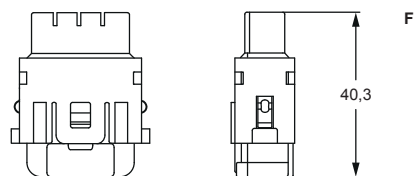
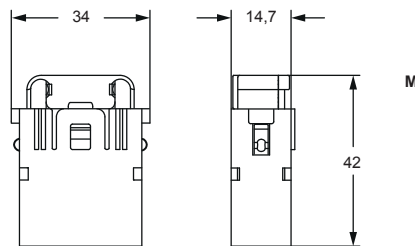
crimp
flange



crimp
sleeves

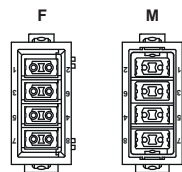


CX 08 I6GF, CX 08 I6GM



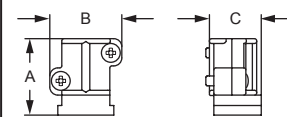
contacts side (front view)

side with reference arrow ▲



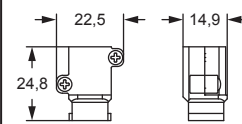
- 1 frame slot

CX 5/7 CA, CX 7/10 CA, CX 10/12 CA



part No.	A	B	C
CX 5/7 CA	19,1	18	12,95
CX 7/10 CA	19,1	18	12,95
CX 10/12 CA	19,1	20,8	12,95

CX 11/14 CA



CI 5 A Crimp contacts

CI (5 A) crimp contacts gold plated

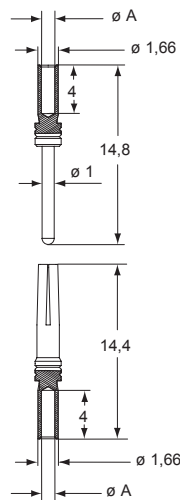


description	part No.
CI (5 A) female crimp contacts 0,08-0,21 mm ² AWG 28-24 0,13-0,33 mm ² AWG 26-22 0,33-0,52 mm ² AWG 22-20	CIFD 0.2 CIFD 0.3 CIFD 0.5
CI (5 A) male crimp contacts 0,08-0,21 mm ² AWG 28-24 0,13-0,33 mm ² AWG 26-22 0,33-0,52 mm ² AWG 22-20	CIMD 0.2 CIMD 0.3 CIMD 0.5

gold plated⁺

⁺ for basic or high thickness gold plating, please refer to page 74 of NEWS 2020 catalogue

CIF and CIM



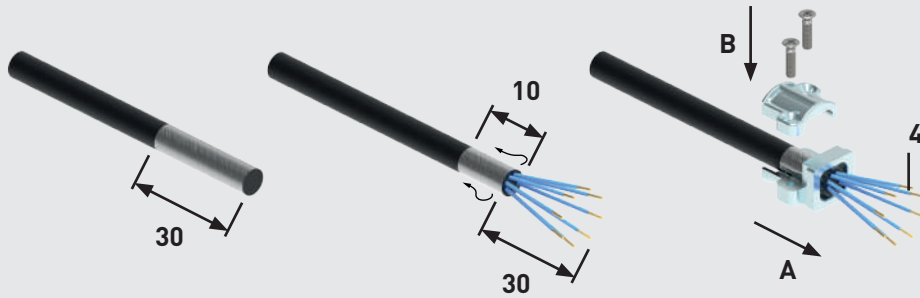
CIF and CIM contacts

conductor section (mm ²)	conductor slot $\varnothing A$ (mm)	conductors stripping length (mm)
0,08-0,21	0,64	4
0,13-0,33	0,90	4
0,33-0,52	1,12	4

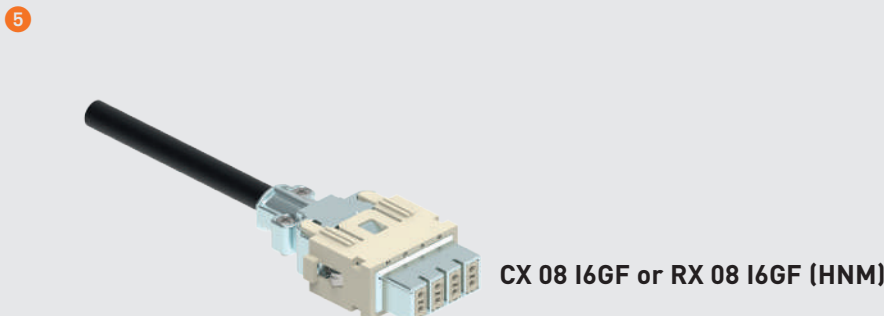
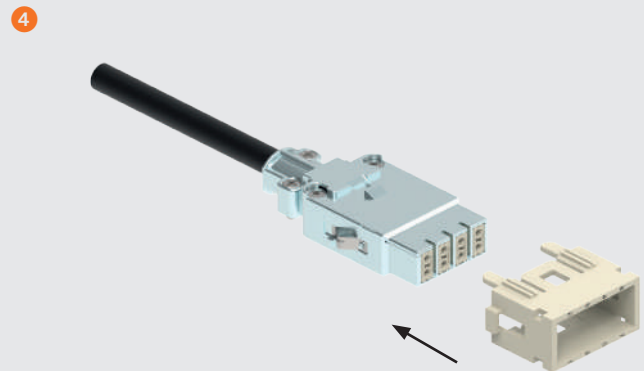
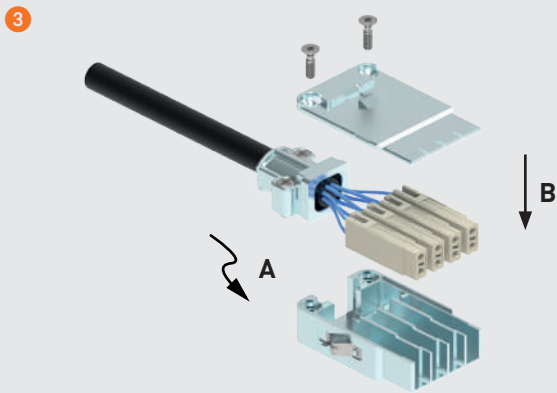
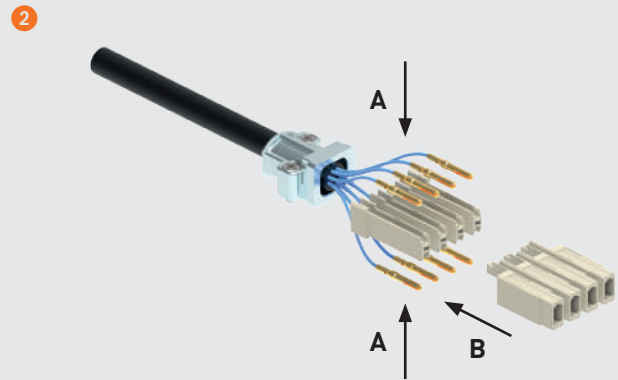
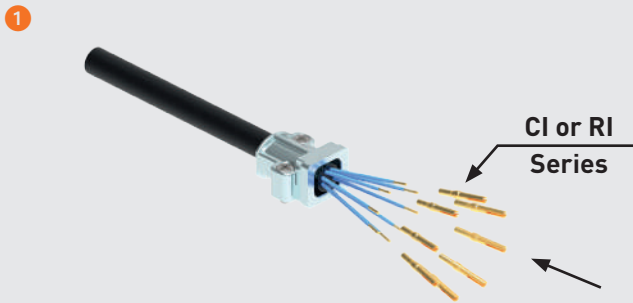
Gigabit 8 poles + shield 5 A - 50 V

ASSEMBLY INSTRUCTIONS

MIXO GIGABIT CX 08 I6GF OR RX 08 I6GF (HNM) - FEMALE MODULE



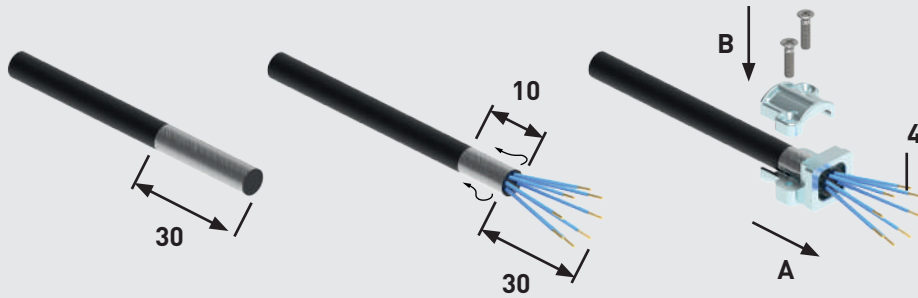
Cable clamp part No.	mm ∅	Screw size	Tightening torque (Nm)	Recommended size of screwdriver
CX 5/7 CA	5-7	M 2,5	0,4	Ph1
CX 7/10 CA	7-10	M 2,5	0,4	Ph1
CX 10/12 CA	10-12	M 2,5	0,4	Ph1
CX 11/14 CA	11-14	M 2,5	0,4	Ph1



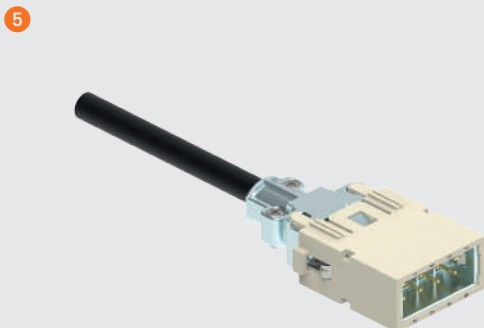
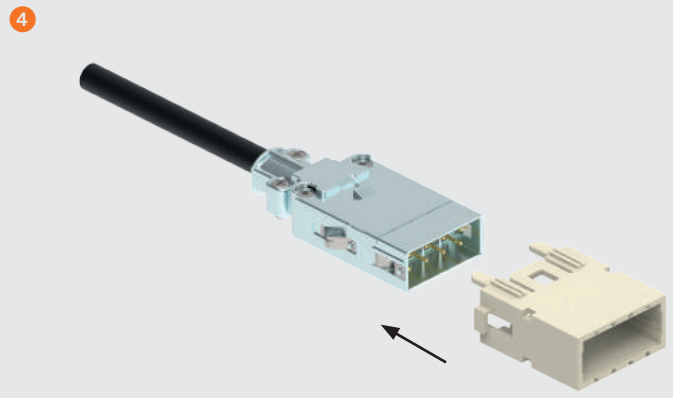
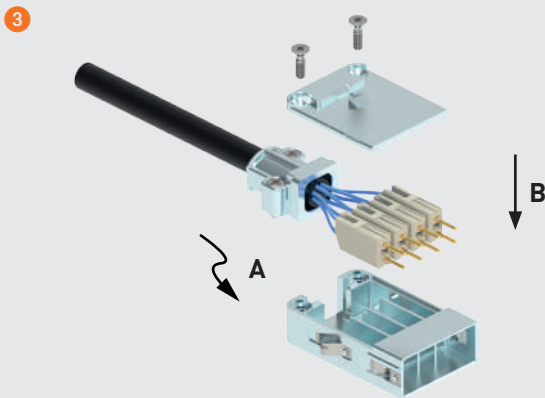
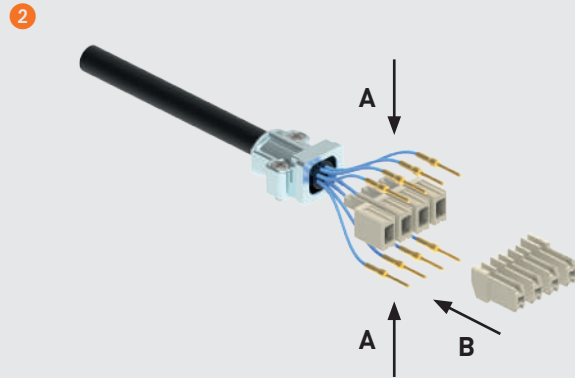
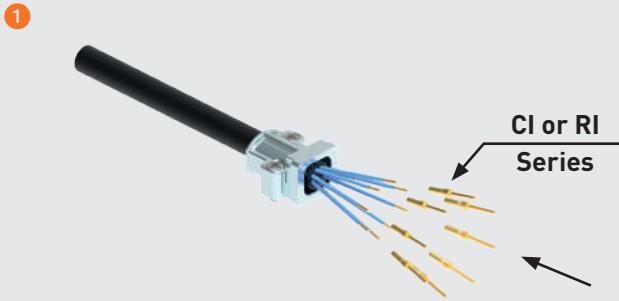
ASSEMBLY INSTRUCTIONS

MIXO GIGABIT CX 08 I6GM OR RX 08 I6GM (HNM) - MALE MODULE

Watch our assembly tutorial



Cable clamp part No.	mm	Screw size	Tightening torque (Nm)	Recommended size of screwdriver
CX 5/7 CA	5-7	M 2,5	0,4	Ph1
CX 7/10 CA	7-10	M 2,5	0,4	Ph1
CX 10/12 CA	10-12	M 2,5	0,4	Ph1
CX 11/14 CA	11-14	M 2,5	0,4	Ph1



CX 08 I6GM or RX 08 I6GM (HNM)

Shielded 20 poles + shield connection 4 A - 32 V

The modular inserts must be installed in suitable frames which are then mounted in traditional housings or in COB panel support.

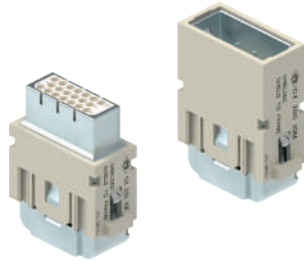
page:

frames for modular units

76

refer to CN.19 pages

modular units,
crimp connection



cable clamp



description

part No.

part No.

without contacts (to be ordered separately)
female inserts for female contacts
male inserts for male contacts

CX 20S IGF
CX 20S IGM

cable clamp for 5-7 mm cable diameter
cable clamp for 7-10 mm cable diameter
cable clamp for 10-12 mm cable diameter
cable clamp for 11-14 mm cable diameter

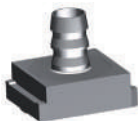
CX 5/7 CA
CX 7/10 CA
CX 10/12 CA
CX 11/14 CA

- characteristics according to EN/IEC 61984 ratings:
4 A 32 V 0,8 kV 3
- UL, CSA, CQC, DNV-GL, BV pending
- rated voltage according to UL/CSA: 32 V
- insulation resistance: $\geq 10 \text{ G}\Omega$
- Lower and Upper Limiting Temperatures (LLT ... ULT):
-40 °C ... +85 °C
- made of self-extinguishing thermoplastic resin
UL 94V-0
- mechanical life: ≥ 500 cycles
- contact resistance: $\leq 4 \text{ m}\Omega$
- for crimp contacts CI series use:
CIPZ D crimping tool
CIPZP D pneumatic crimping tool (see NEWS 2020
page 144)
CITP D turret head
(see pages 716 - 719 of CN.19 catalogue)
- for max. current load see the connector inserts derating
diagrams **under construction**.

we recommend the use of CRF / CRM coding pins
together with relevant MIXO frame

Upon request we can supply crimp flange and crimp
sleeves of different diameters that must be chosen
according to the specific cable shield and insulation
diameter, please contact ILME Commercial Offices.

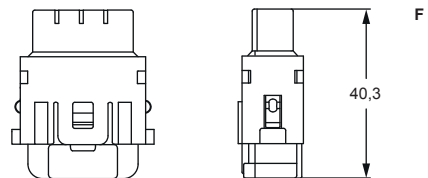
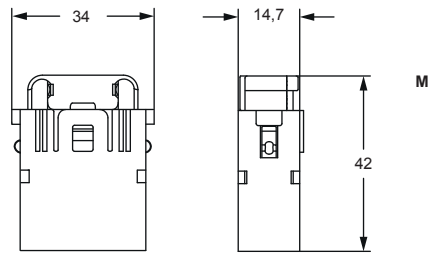
crimp
flange



crimp
sleeves

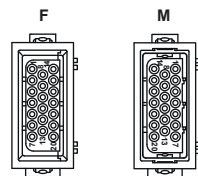


CX 20S IGF, CX 20S IGM



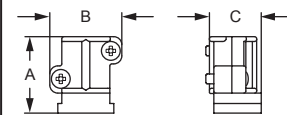
contacts side (front view)

side with reference arrow ▲



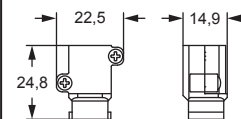
- 1 frame slot

CX 5/7 CA, CX 7/10 CA, CX 10/12 CA



part No.	A	B	C
CX 5/7 CA	19,1	18	12,95
CX 7/10 CA	19,1	18	12,95
CX 10/12 CA	19,1	20,8	12,95

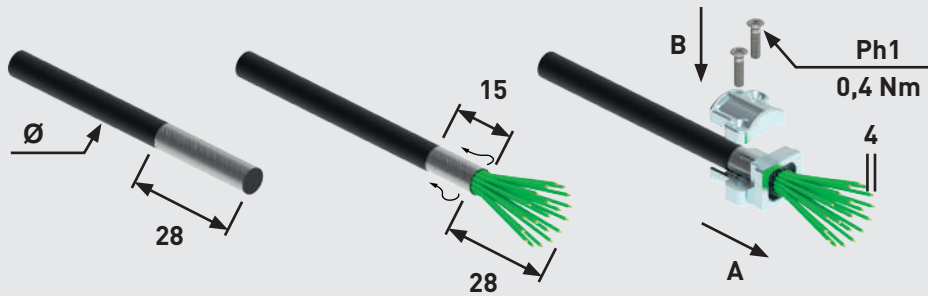
CX 11/14 CA



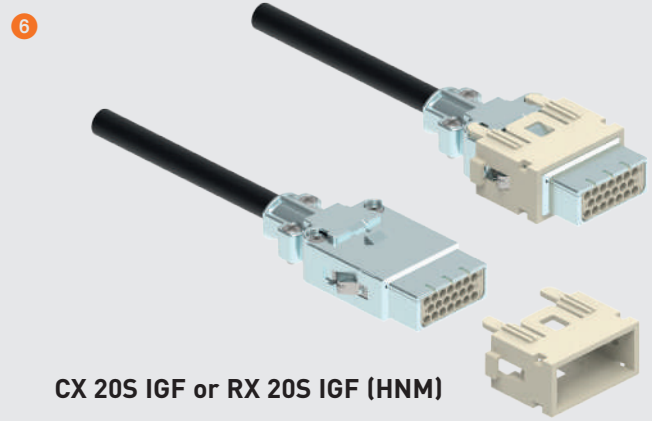
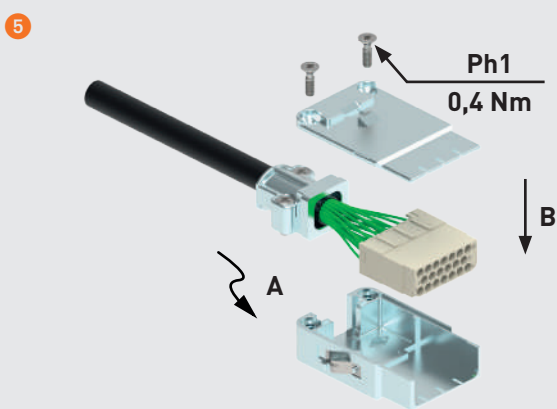
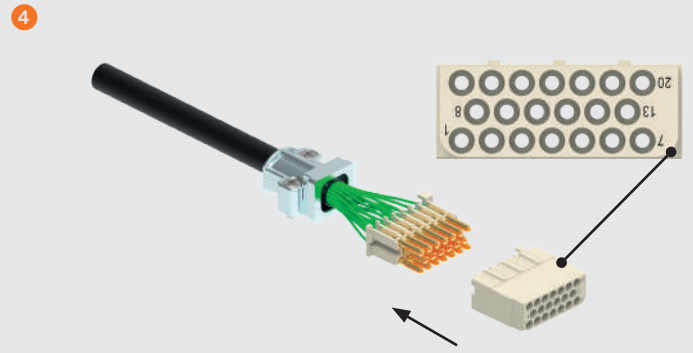
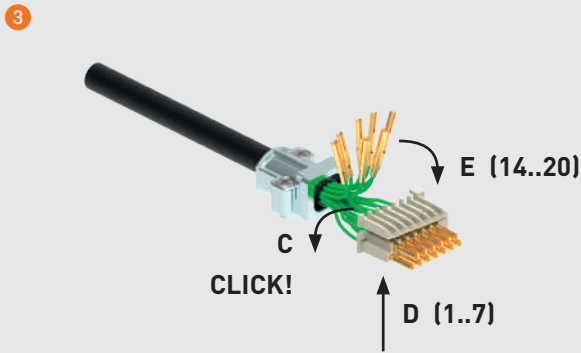
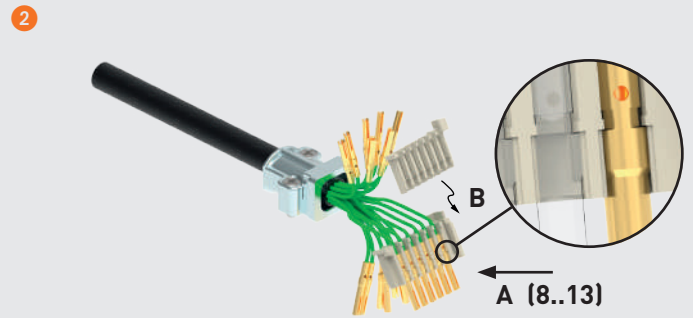
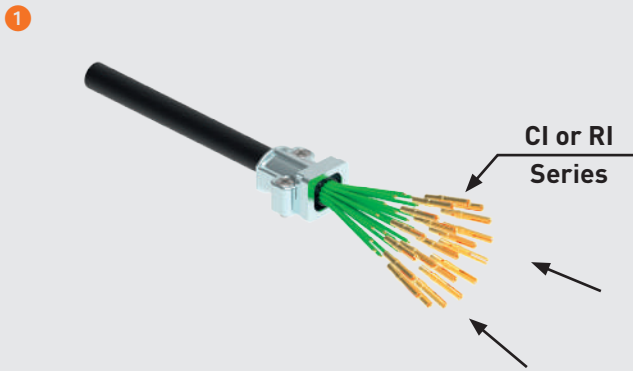
MIXO Shielded 20 poles + shield 4 A - 32 V

ASSEMBLY INSTRUCTIONS

MIXO SHIELDED CX 20S IGF OR RX 20S IGF (HNM) - FEMALE MODULE



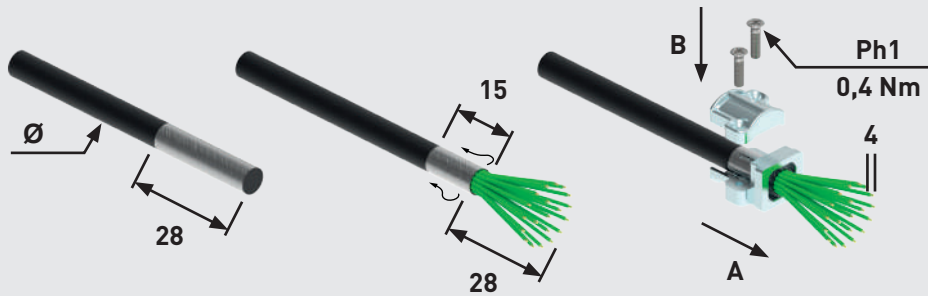
Cable clamp part No.	mm	Screw size	Tightening torque (Nm)	Recommended size of screwdriver
CX 5/7 CA	5-7	M 2,5	0,4	Ph1
CX 7/10 CA	7-10	M 2,5	0,4	Ph1
CX 10/12 CA	10-12	M 2,5	0,4	Ph1
CX 11/14 CA	11-14	M 2,5	0,4	Ph1



ASSEMBLY INSTRUCTIONS

MIXO SHIELDED CX 20S IGM OR RX 20S IGM (HNM) - MALE MODULE

Watch our assembly tutorial



Cable clamp part No.	mm	Screw size	Tightening torque (Nm)	Recommended size of screwdriver
CX 5/7 CA	5-7	M 2,5	0,4	Ph1
CX 7/10 CA	7-10	M 2,5	0,4	Ph1
CX 10/12 CA	10-12	M 2,5	0,4	Ph1
CX 11/14 CA	11-14	M 2,5	0,4	Ph1

